

Harris Central Appraisal District

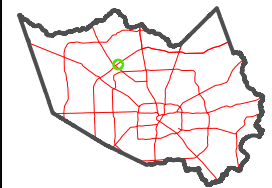


0 45 90 180 Feet

PUBLICATION DATE: 4/8/2024

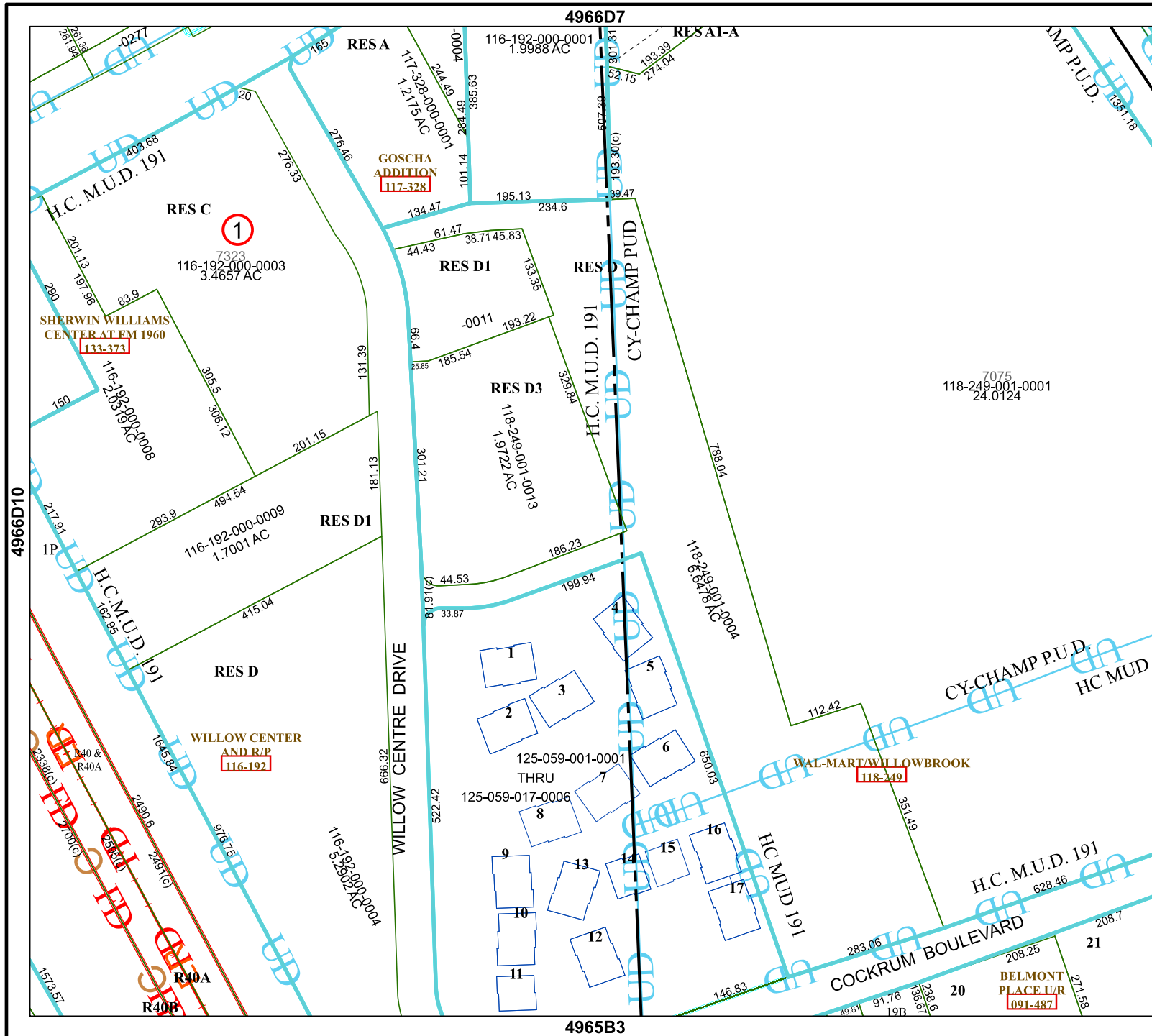
Geospatial or map data maintained by the Harris Central Appraisal District is for informational purposes and may not have been prepared for or be suitable for legal, engineering, or surveying purposes. It does not represent an on-the-ground survey and only represents the approximate location of property boundaries.

MAP LOCATION



FACET 4966D11

5	6	7	8	5
9	10	11	12	9
1	2	3	4	1



4966D7

4965B3

4966D12

4966D10

4966D13

4966D14

4966D15

4966D16

4966D17

4966D18

4966D19