

4967C5

VINTAGE PARKWAY APARTMENTS
145-546

VINTAGE PARK APARTMENTS
150-027

Harris Central Appraisal District



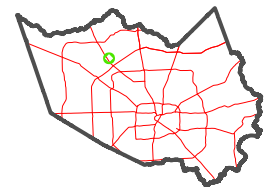
0 45 90 180 Feet

PUBLICATION DATE:
12/30/2023

Geospatial or map data maintained by the Harris Central Appraisal District is for informational purposes and may not have been prepared for or be suitable for legal, engineering, or surveying purposes. It does not represent an on-the-ground survey and only represents the approximate location of property boundaries.



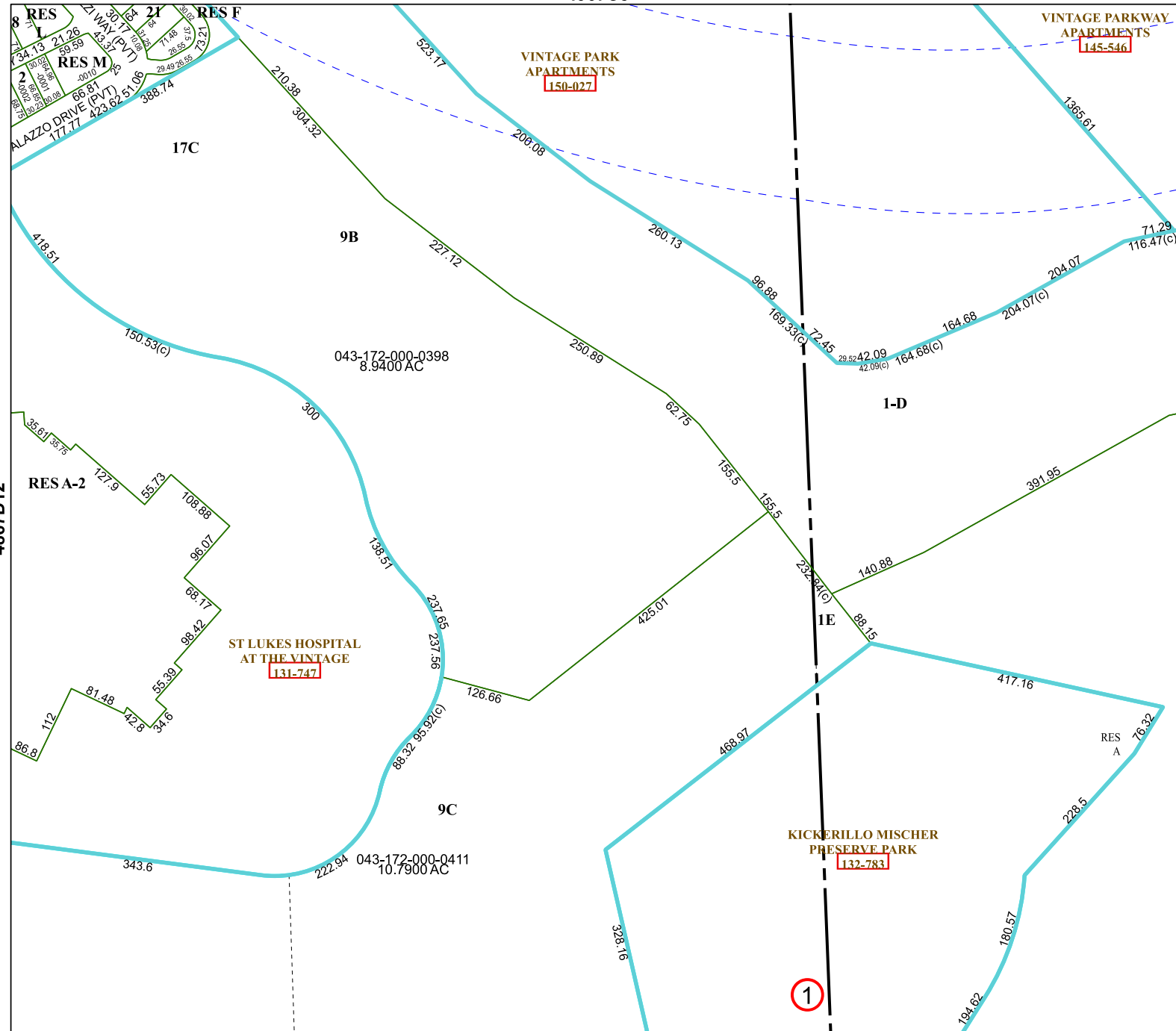
MAP LOCATION



FACET

4967C9

7	8	5	6	7
11	12	9	10	11
3	4	1	2	3



4966A1

1

4867D12

4967C10