

Harris Central Appraisal District

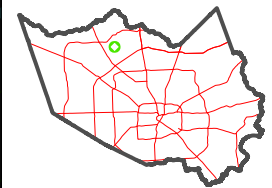


0 45 90 180 Feet

PUBLICATION DATE:
1/5/2023

Geospatial or map data maintained by the Harris Central Appraisal District is for informational purposes and may not have been prepared for or be suitable for legal, engineering, or surveying purposes. It does not represent an on-the-ground survey and only represents the approximate location of property boundaries.

MAP LOCATION

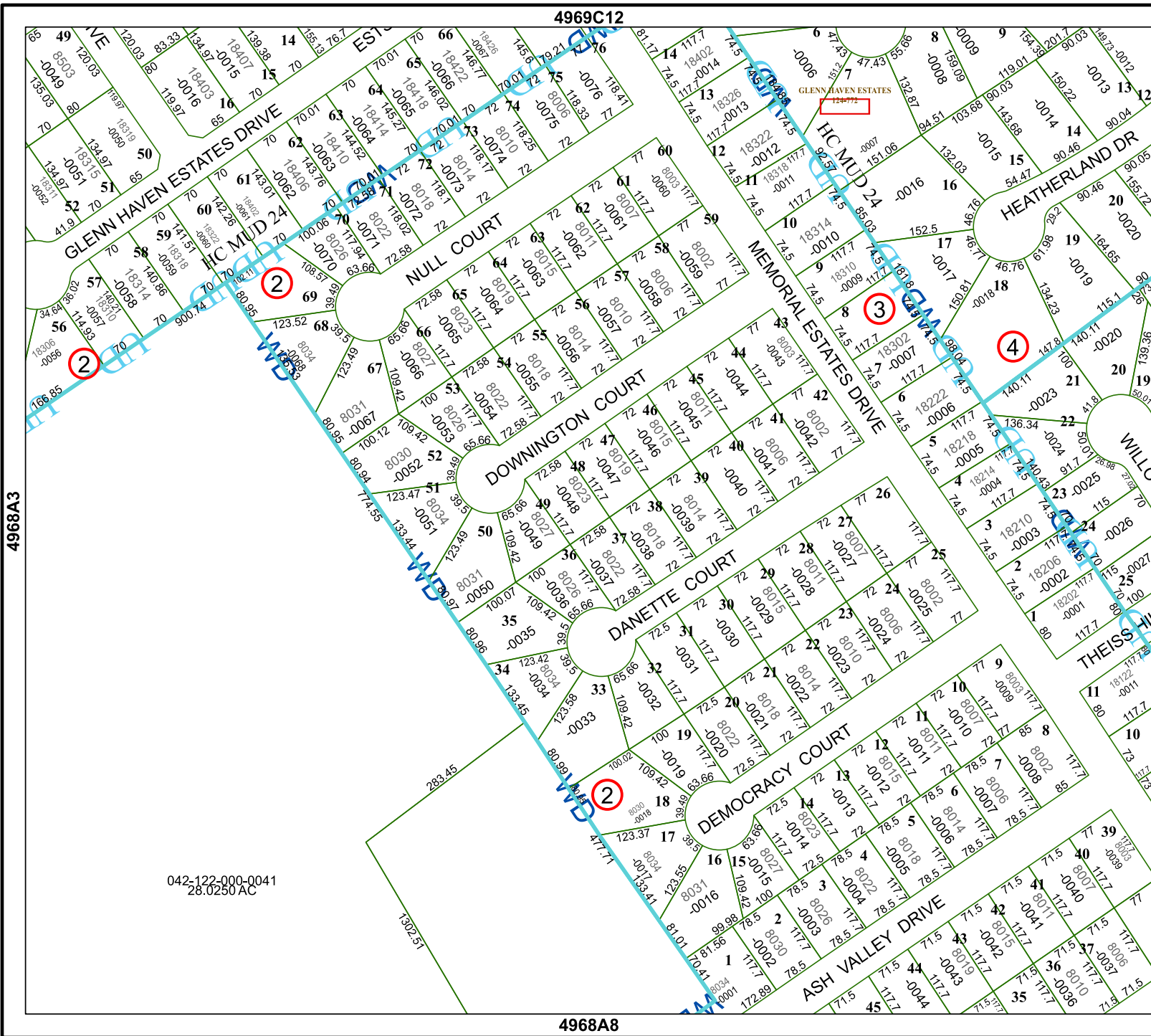


FACET 4968A4

10	11	12	9	10
2	3	4	1	2
6	7	8	5	6

4969C12

4968A8



042-122-000-0041
28.0250 AC

4968A3

4968B1

