

Harris Central Appraisal District

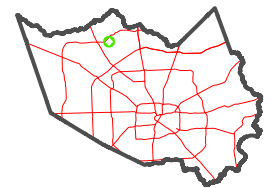


0 45 90 180 Feet

PUBLICATION DATE: 1/5/2023

Geospatial or map data maintained by the Harris Central Appraisal District is for informational purposes and may not have been prepared for or be suitable for legal, engineering, or surveying purposes. It does not represent an on-the-ground survey and only represents the approximate location of property boundaries.

MAP LOCATION

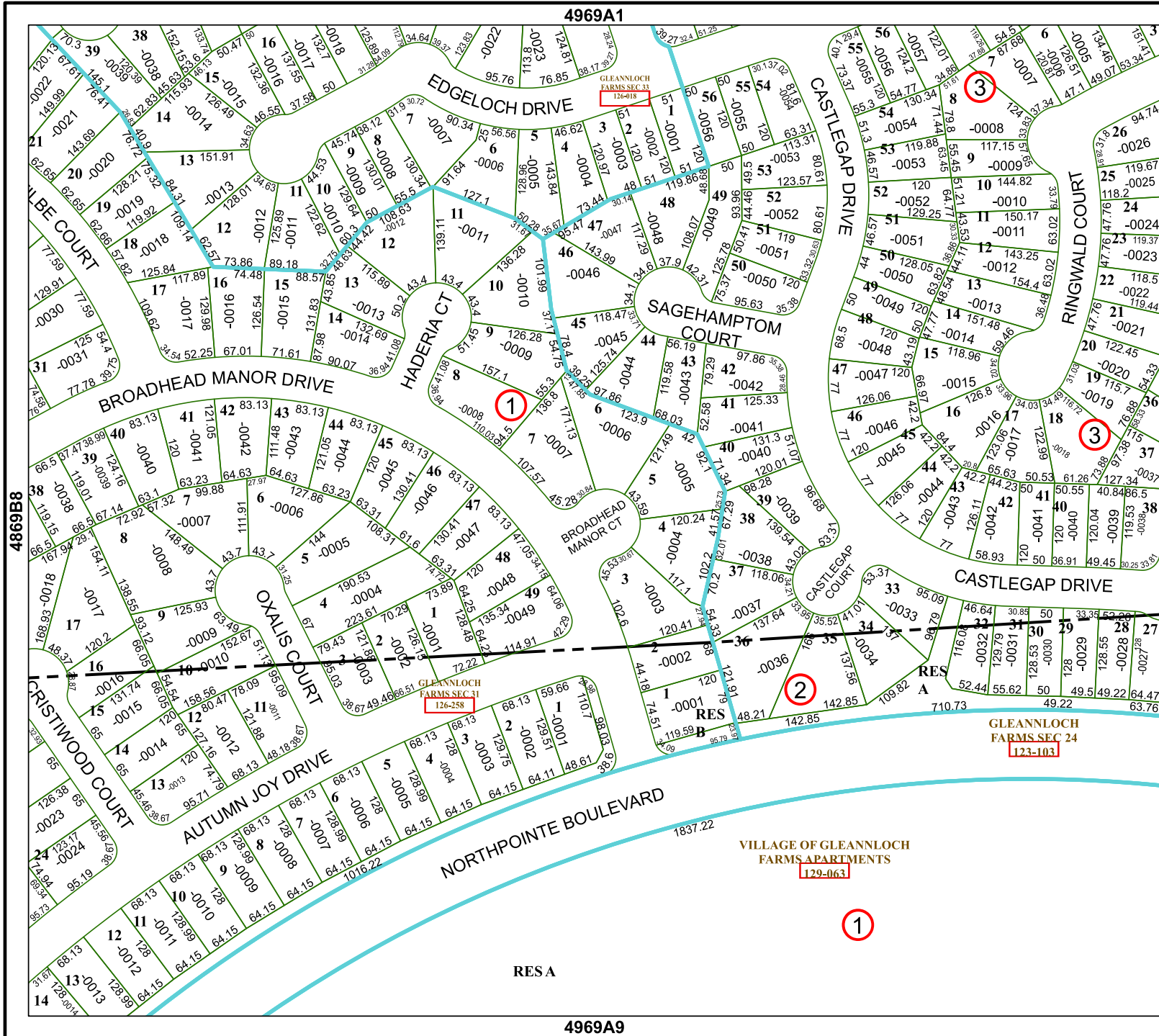


FACET 4969A5

3	4	1	2	3
7	8	5	6	7
11	12	9	10	11

4969A1

4969A9



RESA

VILLAGE OF GLEANNLOCH FARMS APARTMENTS 129-063

GLEANNLOCH FARMS SEC 24 123-103

GLEANNLOCH FARMS SEC 31 126-258

GLEANNLOCH FARMS SEC 33 126-018