

# Harris Central Appraisal District



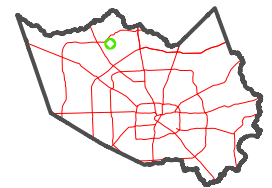
0 45 90 180 Feet

PUBLICATION DATE:  
1/5/2023

Geospatial or map data maintained by the Harris Central Appraisal District is for informational purposes and may not have been prepared for or be suitable for legal, engineering, or surveying purposes. It does not represent an on-the-ground survey and only represents the approximate location of property boundaries.



## MAP LOCATION

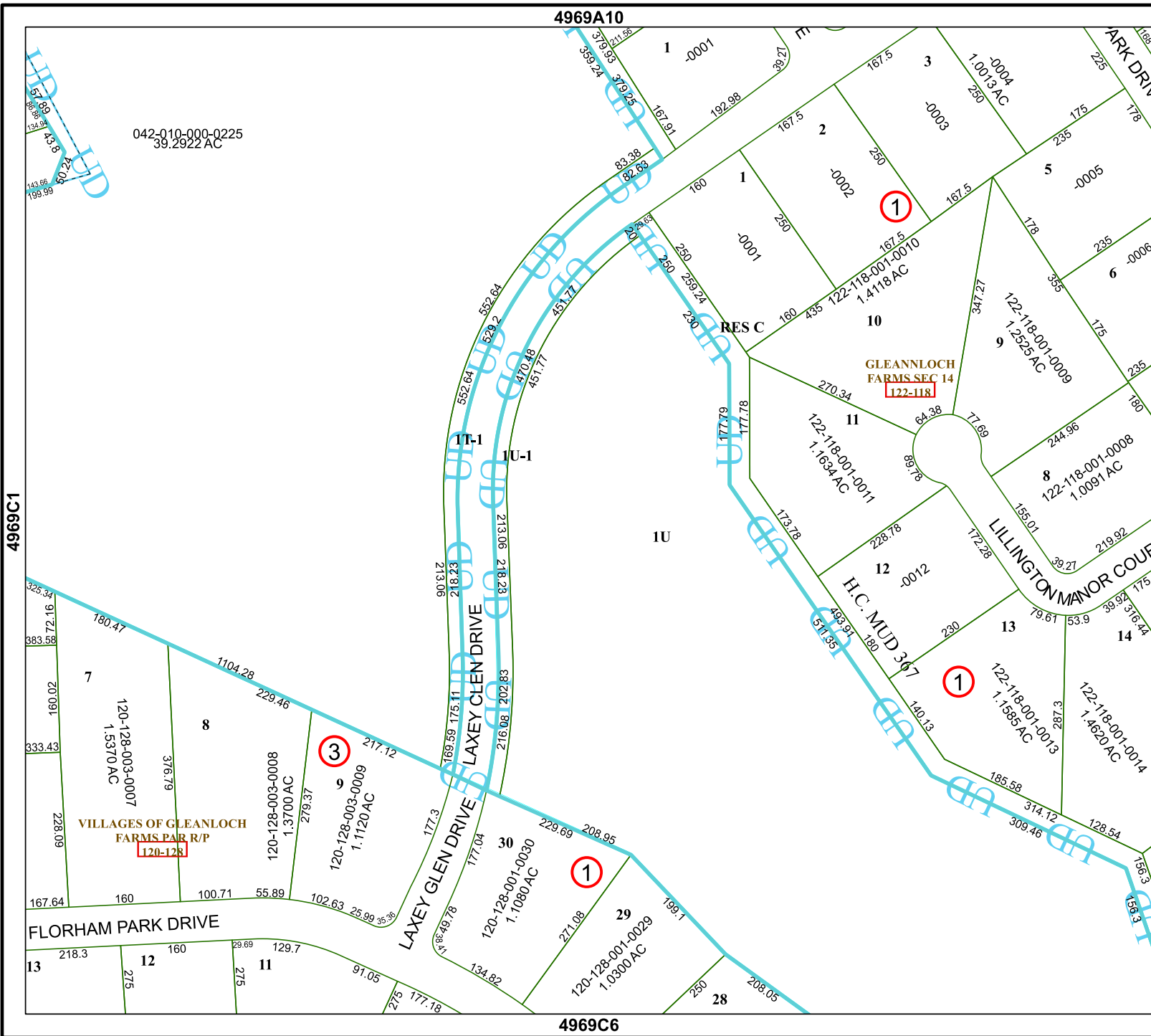


# FACET 4969C2

12	9	10	11	12
4	1	2	3	4
8	5	6	7	8

4969A10

4969C6



042-010-000-0225  
39.2922 AC

4969C1

4969C3