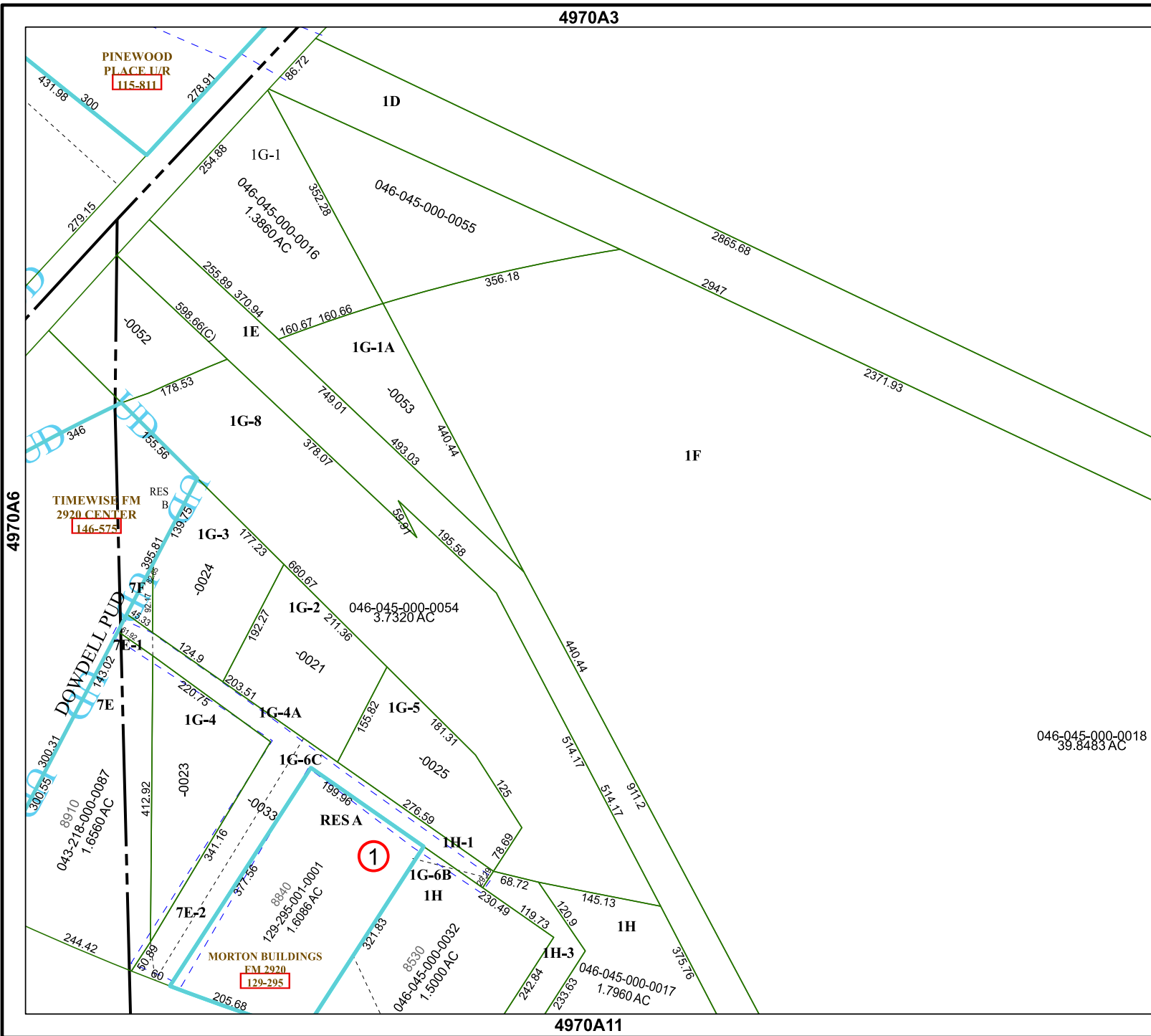


4970A3

4970A11



# Harris Central Appraisal District



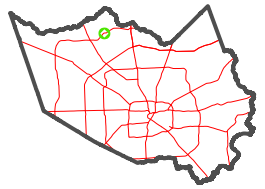
0 45 90 180 Feet

PUBLICATION DATE:  
12/30/2023

Geospatial or map data maintained by the Harris Central Appraisal District is for informational purposes and may not have been prepared for or be suitable for legal, engineering, or surveying purposes. It does not represent an on-the-ground survey and only represents the approximate location of property boundaries.



### MAP LOCATION



046-045-000-0018  
39.8483 AC

# FACET 4970A7

1	2	3	4	1
5	6	7	8	5
9	10	11	12	9