

Harris Central Appraisal District

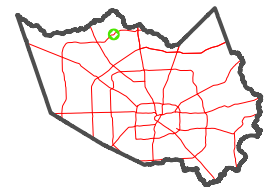


0 45 90 180 Feet

PUBLICATION DATE:
1/5/2023

Geospatial or map data maintained by the Harris Central Appraisal District is for informational purposes and may not have been prepared for or be suitable for legal, engineering, or surveying purposes. It does not represent an on-the-ground survey and only represents the approximate location of property boundaries.

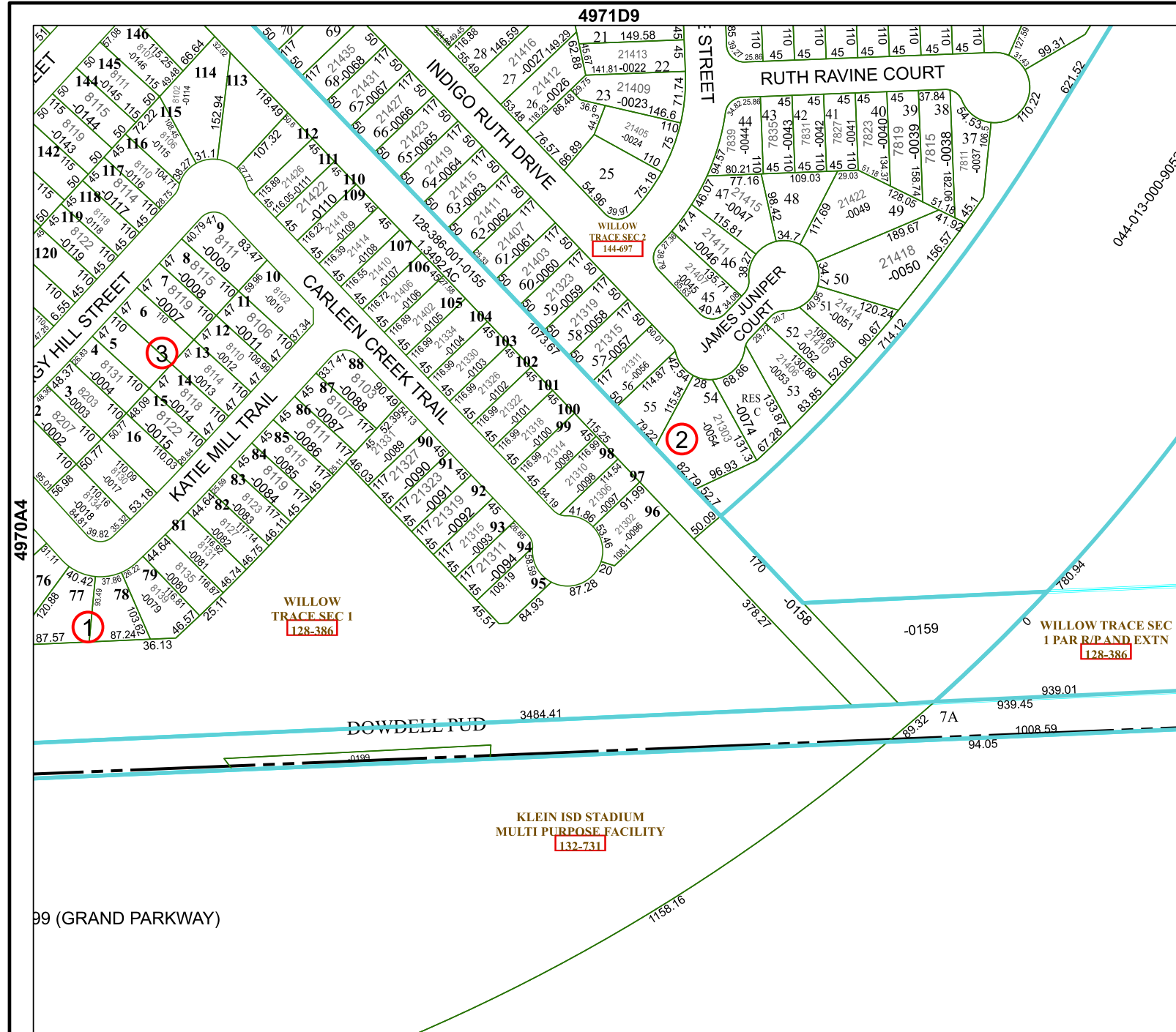
MAP LOCATION



FACET 4970B1

11	12	9	10	11
3	4	1	2	3
7	8	5	6	7

4971D9



4970B5

4970B2

4970A4

99 (GRAND PARKWAY)

