

4970B1

Harris Central Appraisal District



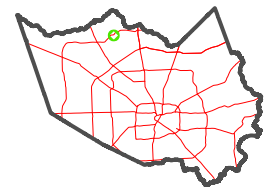
0 45 90 180
Feet

PUBLICATION DATE:
1/5/2023

Geospatial or map data maintained by the Harris Central Appraisal District is for informational purposes and may not have been prepared for or be suitable for legal, engineering, or surveying purposes. It does not represent an on-the-ground survey and only represents the approximate location of property boundaries.



MAP LOCATION



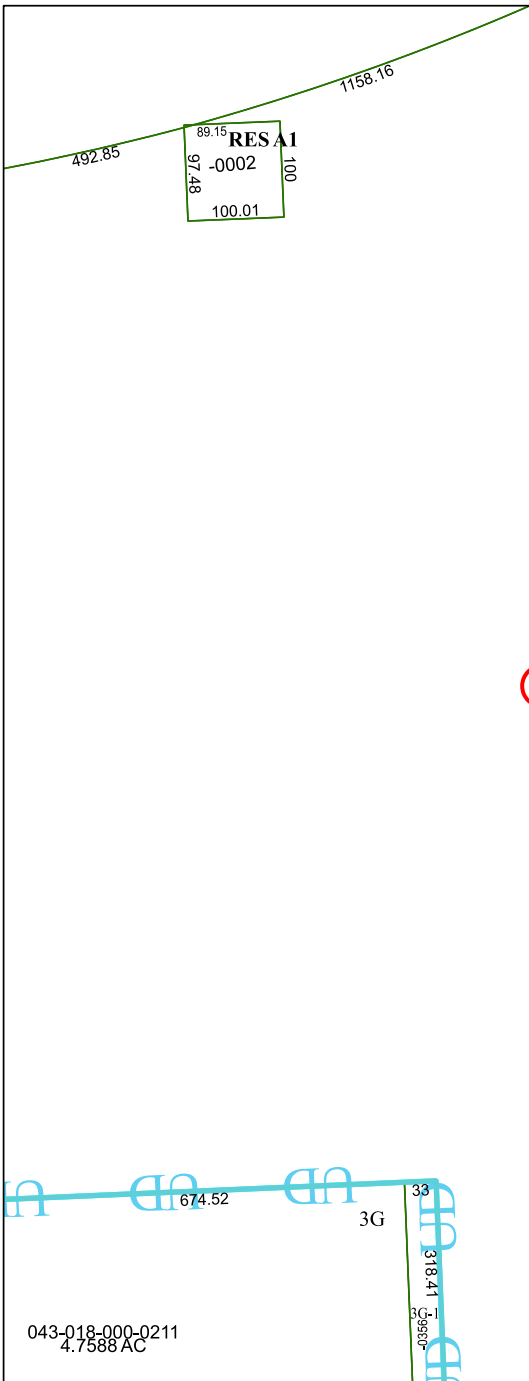
FACET 4970B5

3	4	1	2	3
7	8	5	6	7
11	12	9	10	11

4970B9

4970A8

4970B6



043-018-000-0211
4.7588 AC