

4970C6

Harris Central Appraisal District



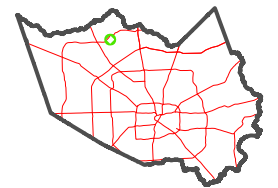
0 45 90 180 Feet

PUBLICATION DATE:
1/5/2023

Geospatial or map data maintained by the Harris Central Appraisal District is for informational purposes and may not have been prepared for or be suitable for legal, engineering, or surveying purposes. It does not represent an on-the-ground survey and only represents the approximate location of property boundaries.



MAP LOCATION

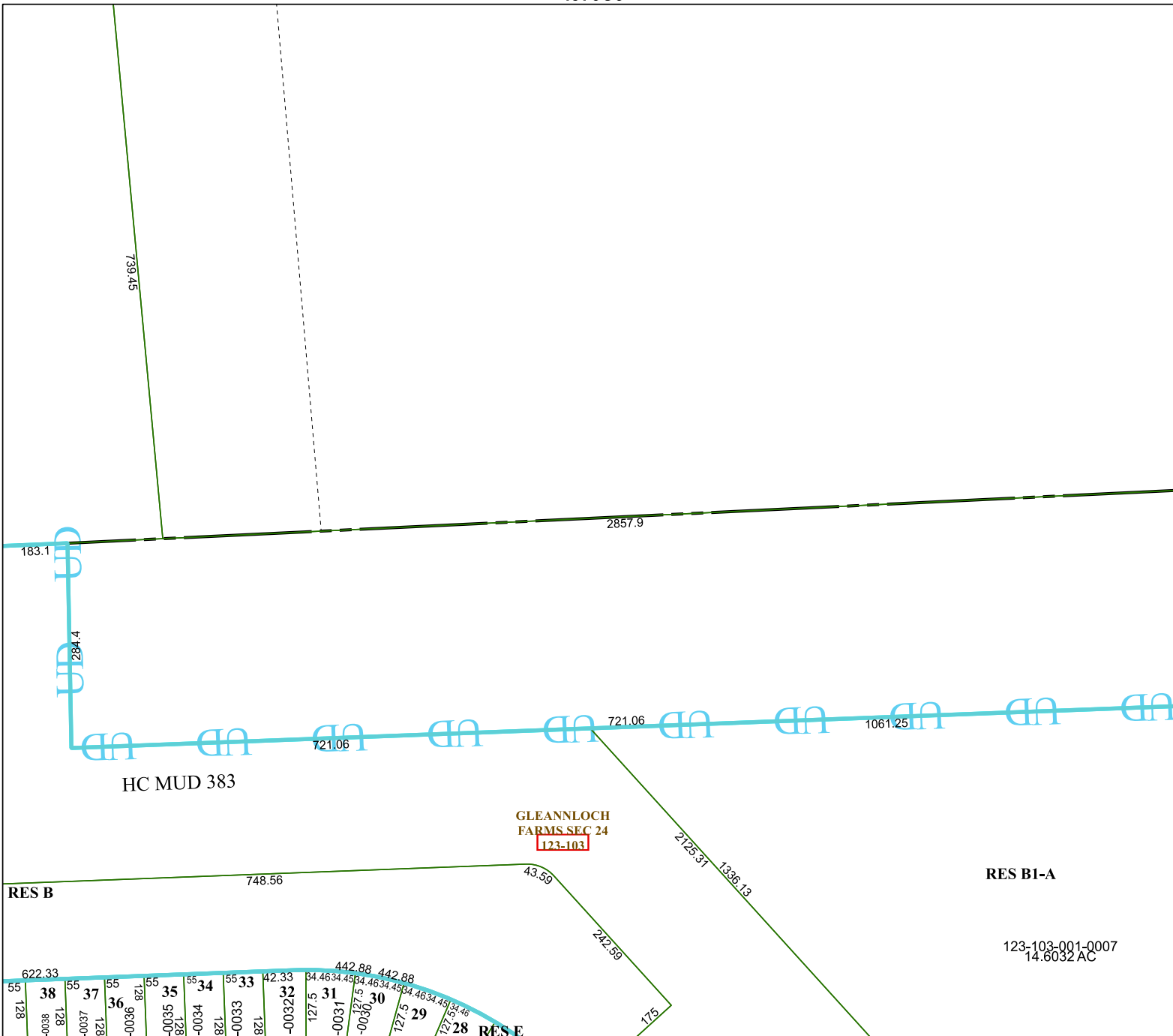


FACET 4970C10

8	5	6	7	8
12	9	10	11	12
4	1	2	3	4

4970C9

4970C11



HC MUD 383

GLEANNLOCH FARMS SEC 24
123-103

RES B

RES B1-A

123-103-001-0007
14.6032 AC

4969A2