

# Harris Central Appraisal District

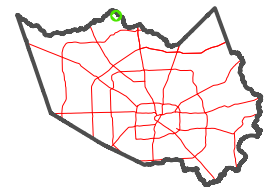


0 45 90 180 Feet

PUBLICATION DATE:  
1/5/2023

Geospatial or map data maintained by the Harris Central Appraisal District is for informational purposes and may not have been prepared for or be suitable for legal, engineering, or surveying purposes. It does not represent an on-the-ground survey and only represents the approximate location of property boundaries.

MAP LOCATION

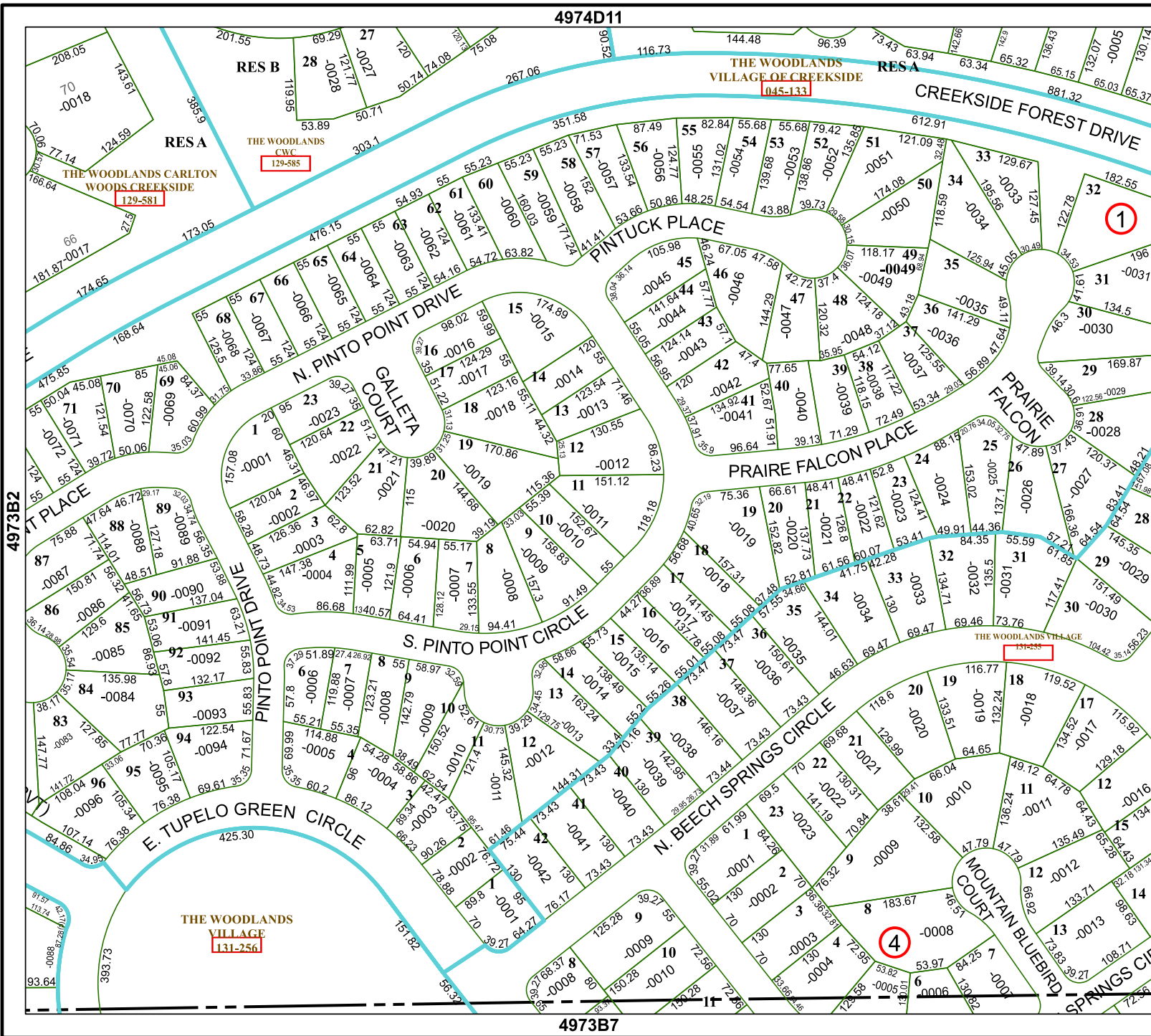


## FACET 4973B3

9	10	11	12	9
1	2	3	4	1
5	6	7	8	5

4974D11

4973B7



RES B

RESA

RESA

THE WOODLANDS CWC  
129-585

THE WOODLANDS CARLTON  
WOODS CREEKSIDE  
129-581

THE WOODLANDS VILLAGE OF CREEKSIDE  
145-133

THE WOODLANDS VILLAGE  
131-256

1

4