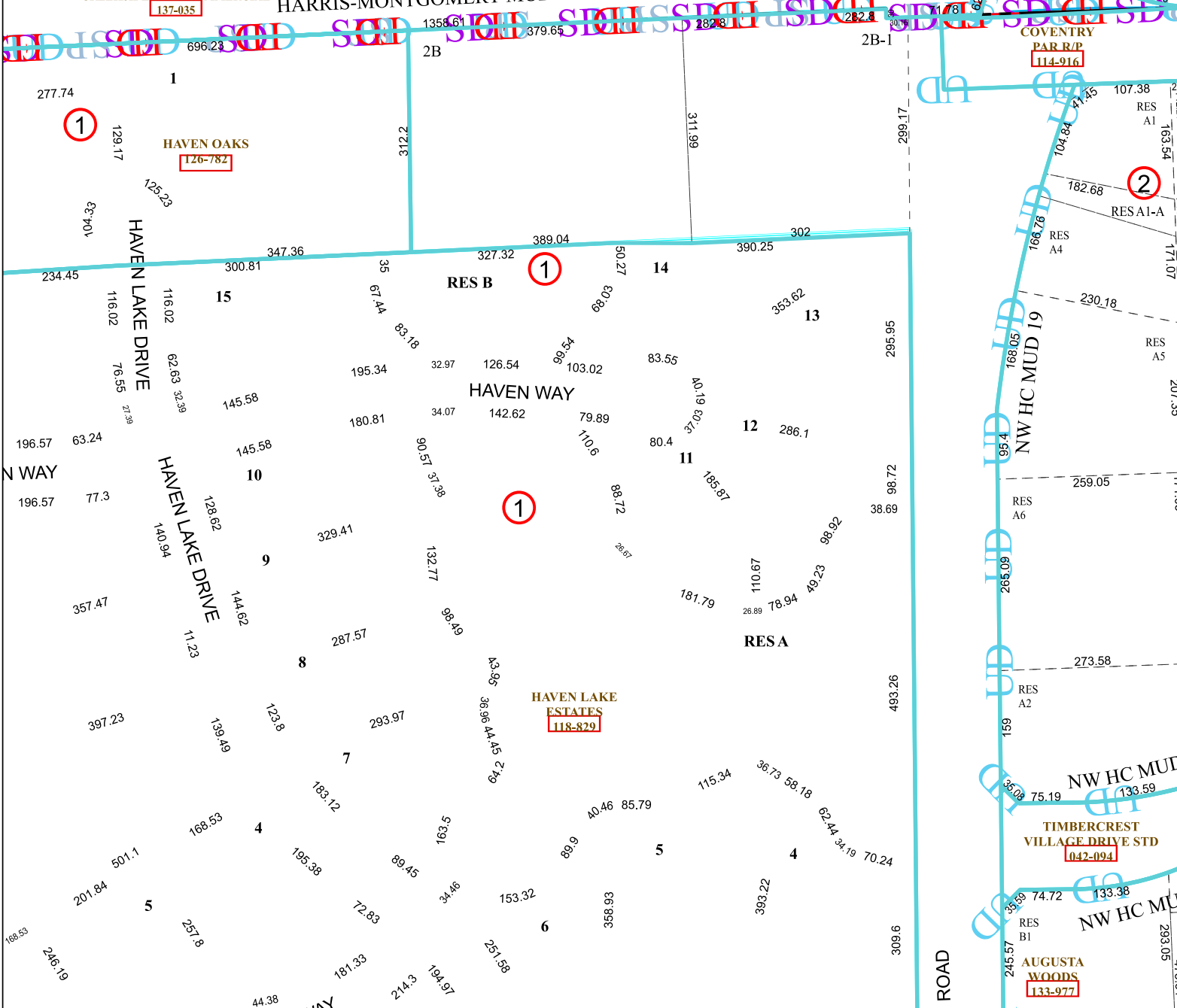


4973C2

THE WOODLANDS VILLAGE OF CREEKSIDE PARK COMMERCIAL
137-035

HARRIS-MONTGOMERY MUD 386



4973C10

Harris Central Appraisal District



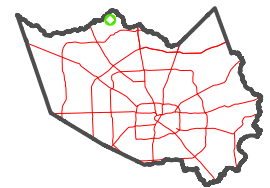
0 45 90 180 Feet

PUBLICATION DATE: 1/5/2023

Geospatial or map data maintained by the Harris Central Appraisal District is for informational purposes and may not have been prepared for or be suitable for legal, engineering, or surveying purposes. It does not represent an on-the-ground survey and only represents the approximate location of property boundaries.



MAP LOCATION



FACET 4973C6

4	1	2	3	4
8	5	6	7	8
12	9	10	11	12