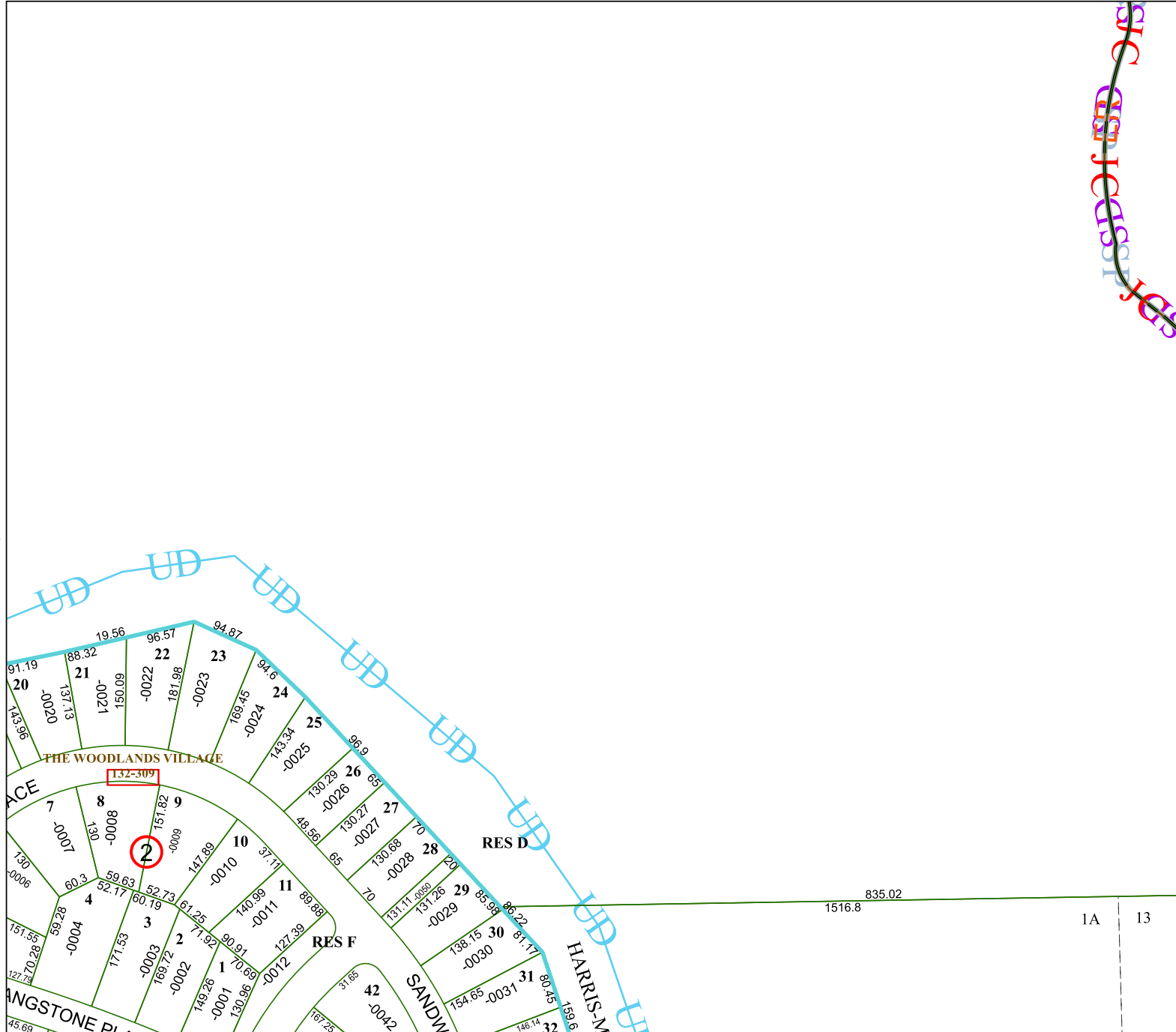


4974D8

4974D11

4973B4



# Harris Central Appraisal District



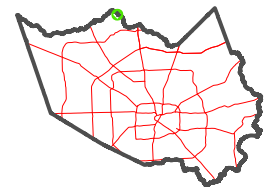
0 45 90 180 Feet

PUBLICATION DATE:  
5/6/2024

Geospatial or map data maintained by the Harris Central Appraisal District is for informational purposes and may not have been prepared for or be suitable for legal, engineering, or surveying purposes. It does not represent an on-the-ground survey and only represents the approximate location of property boundaries.



### MAP LOCATION



## FACET 4974D12

6	7	8	5	6
10	11	12	9	10
2	3	4	1	2

5074C9

1A

13