

5050B7

193-900-030-0049
20.0954 AC.

193-900-030-0053
4.0000 AC.

379.65

J. LAFAYETTE
A-280

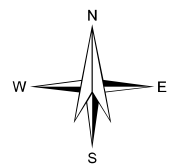
PROPOSED BAY CITY EXPRESSWAY

Harris County Appraisal District

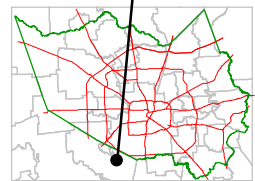


0 100 200

PUBLICATION DATE:
5/26/2009



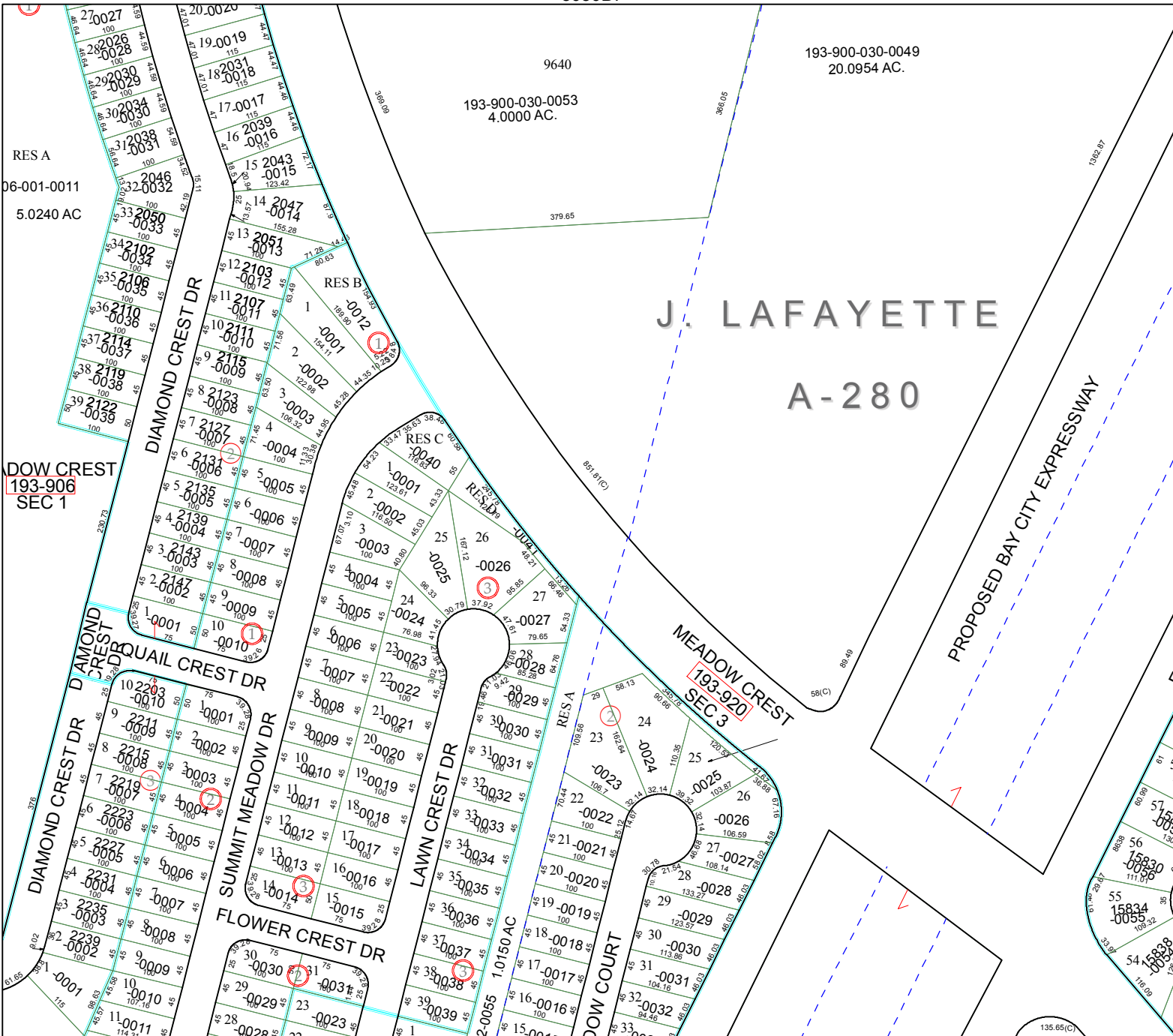
MAP LOCATION



FACET 5050B

1	2	3	4
5	6	7	8
9	10	11	12

5050D3



RES A
06-001-0011
5.0240 AC

DOW CREST
193-906
SEC 1

MEADOW CREST
193-920
SEC 3

5050B10

5050B12