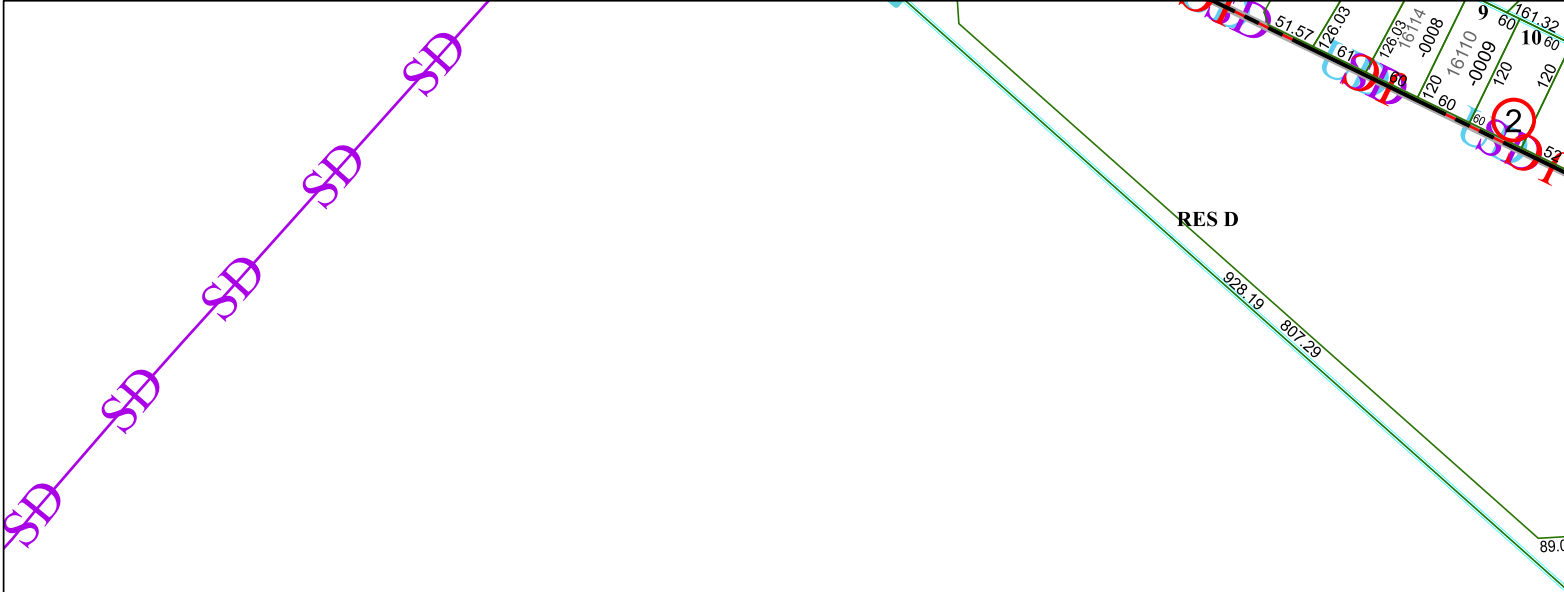
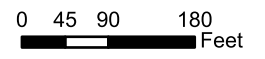


5052C9



Harris Central Appraisal District

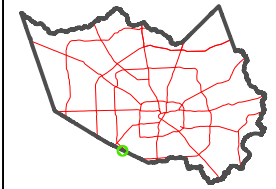


PUBLICATION DATE:
1/6/2023

Geospatial or map data maintained by the Harris Central Appraisal District is for informational purposes and may not have been prepared for or be suitable for legal, engineering, or surveying purposes. It does not represent an on-the-ground survey and only represents the approximate location of property boundaries.



MAP LOCATION



FACET

5051A1

| | | | | |
|----|----|---|----|----|
| 11 | 12 | 9 | 10 | 11 |
| | | 1 | 2 | 3 |
| | | 5 | 6 | 7 |

4951B4

5051A2

5051A5