

5053A4

42D

9600
041-090-000-0188
2.9329 AC

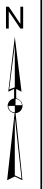
Harris Central Appraisal District



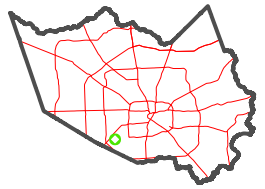
0 45 90 180 Feet

PUBLICATION DATE:
1/6/2023

Geospatial or map data maintained by the Harris Central Appraisal District is for informational purposes and may not have been prepared for or be suitable for legal, engineering, or surveying purposes. It does not represent an on-the-ground survey and only represents the approximate location of property boundaries.



MAP LOCATION



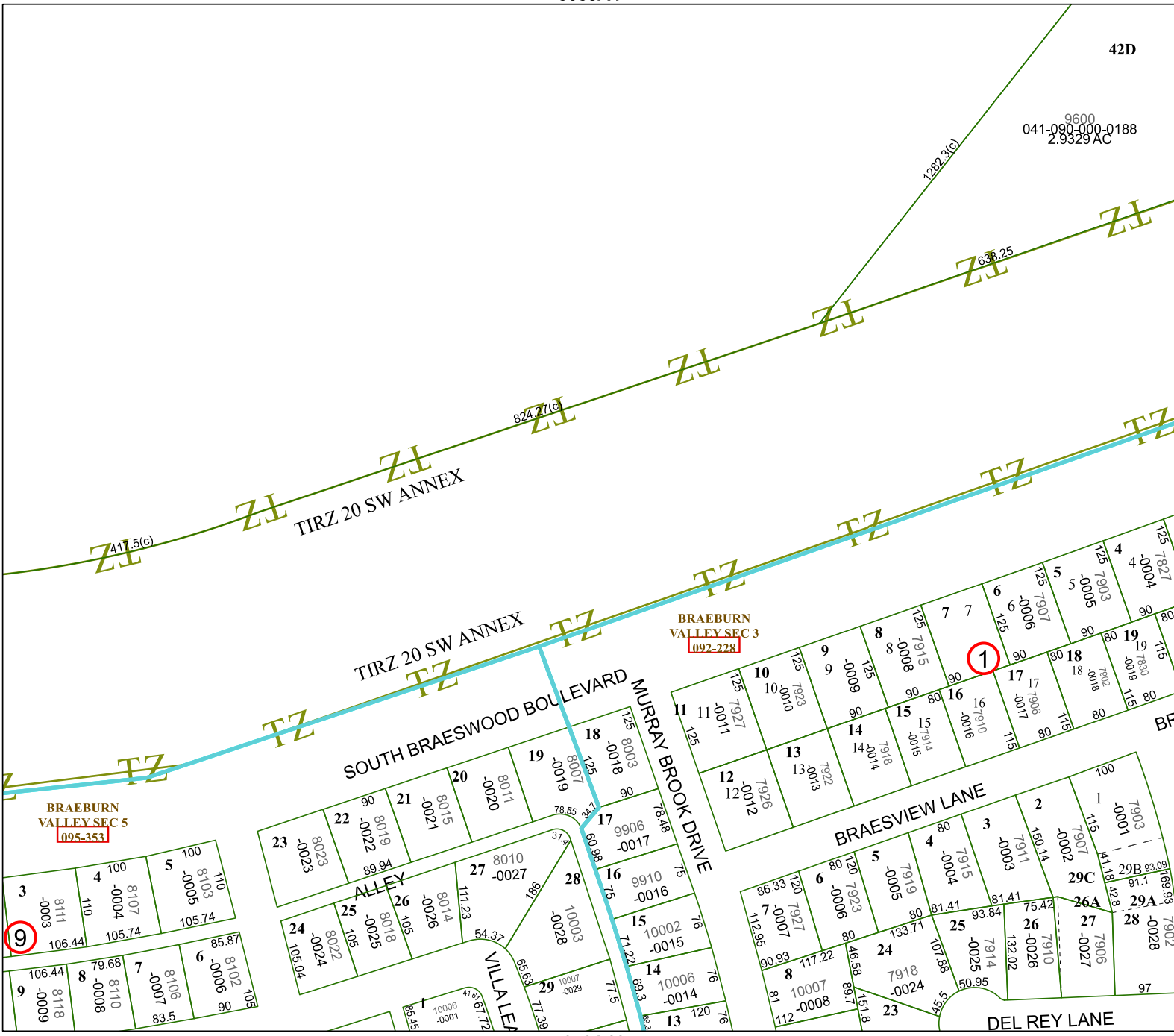
FACET 5053A8

2	3	4	1	2
6	7	8	5	6
10	11	12	9	10

5053A7

5053B5

5053A12



BRAEBURN VALLEY SEC 5
095-353

BRAEBURN VALLEY SEC 3
092-228

3	4	5	100
8111 -0003	8107 -0004	8103 -0005	110 105.74
106.44	105.74	105.74	85.87
8	7	6	103
106.44	79.68 8118 -0009	8106 -0007	8102 -0006
83.5	8110 -0008	8108 -0005	8104 -0002

23	22	21	20	19	18	17	16	15	14	13	12	11
8023 -0023	8019 -0022	8015 -0021	8011 -0020	8007 -0019	8003 -0018	9906 -0017	9910 -0016	10002 -0015	10006 -0014	10007 -0013	7926 -0012	7927 -0011
105.04	105	105	105	105	105	105	105	105	105	105	105	105
24	25	26	27	28	29	30	31	32	33	34	35	36
8022 -0024	8018 -0025	8014 -0026	8010 -0027	8006 -0028	10003 -0029	10007 -0030	10011 -0031	10015 -0032	10019 -0033	10023 -0034	10027 -0035	10031 -0036
105.04	105	105	105	105	105	105	105	105	105	105	105	105

11	10	9	8	7	6	5	4	3	2	1	100
7927 -0011	7923 -0010	7919 -0009	7915 -0008	7911 -0007	7907 -0006	7903 -0005	7900 -0004	7915 -0003	7911 -0002	7907 -0001	7903 -0000
105.11	105.10	105.09	105.08	105.07	105.06	105.05	105.04	105.03	105.02	105.01	105.00
12	13	14	15	16	17	18	19	20	21	22	23
7926 -0012	7922 -0013	7918 -0014	7914 -0015	7910 -0016	7906 -0017	7902 -0018	7900 -0019	7906 -0020	7910 -0021	7914 -0022	7918 -0023
105.12	105.13	105.14	105.15	105.16	105.17	105.18	105.19	105.20	105.21	105.22	105.23
24	25	26	27	28	29	30	31	32	33	34	35
7923 -0006	7919 -0005	7915 -0004	7911 -0003	7907 -0002	7903 -0001	7900 -0000	7906 -0001	7910 -0002	7914 -0003	7918 -0004	7922 -0005
105.24	105.25	105.26	105.27	105.28	105.29	105.30	105.31	105.32	105.33	105.34	105.35