

5055B10

5055D6

5055D1

Harris Central Appraisal District

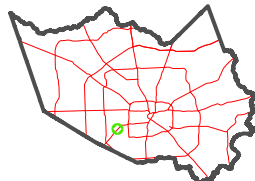


0 45 90 180 Feet

PUBLICATION DATE: 1/10/2025

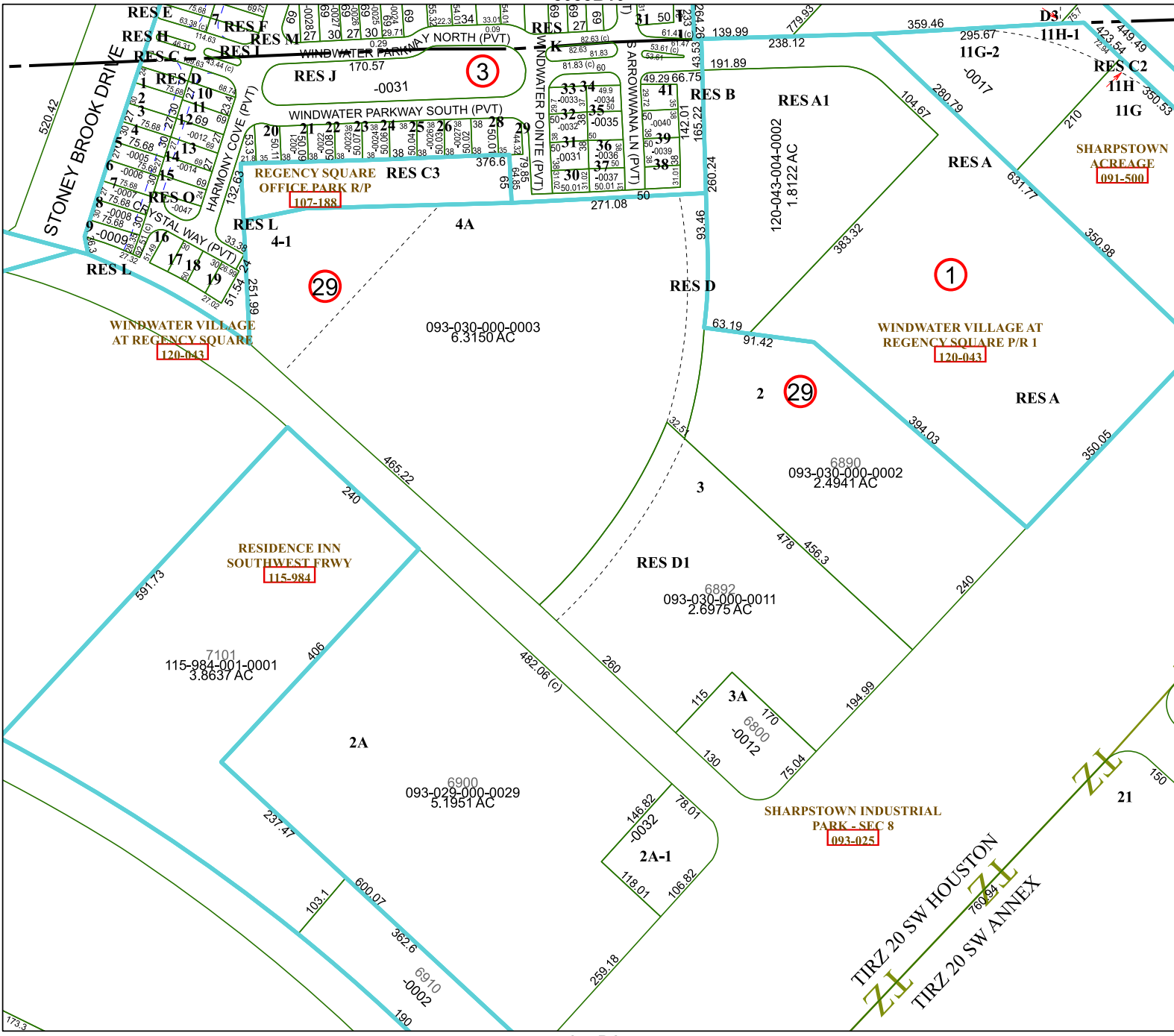
Geospatial or map data maintained by the Harris Central Appraisal District is for informational purposes and may not have been prepared for or be suitable for legal, engineering, or surveying purposes. It does not represent an on-the-ground survey and only represents the approximate location of property boundaries.

MAP LOCATION



FACET 5055D2

12	9	10	11	12
4	1	2	3	4
8	5	6	7	8



5055D3

ZZ

THR 20 SW HOUSTON
ZZ
THR 20 SW ANNEX