

Harris Central Appraisal District



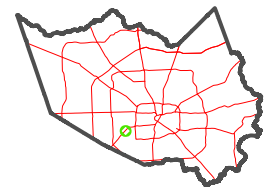
0 45 90 180 Feet

PUBLICATION DATE:
12/30/2023

Geospatial or map data maintained by the Harris Central Appraisal District is for informational purposes and may not have been prepared for or be suitable for legal, engineering, or surveying purposes. It does not represent an on-the-ground survey and only represents the approximate location of property boundaries.



MAP LOCATION



FACET 5055D3

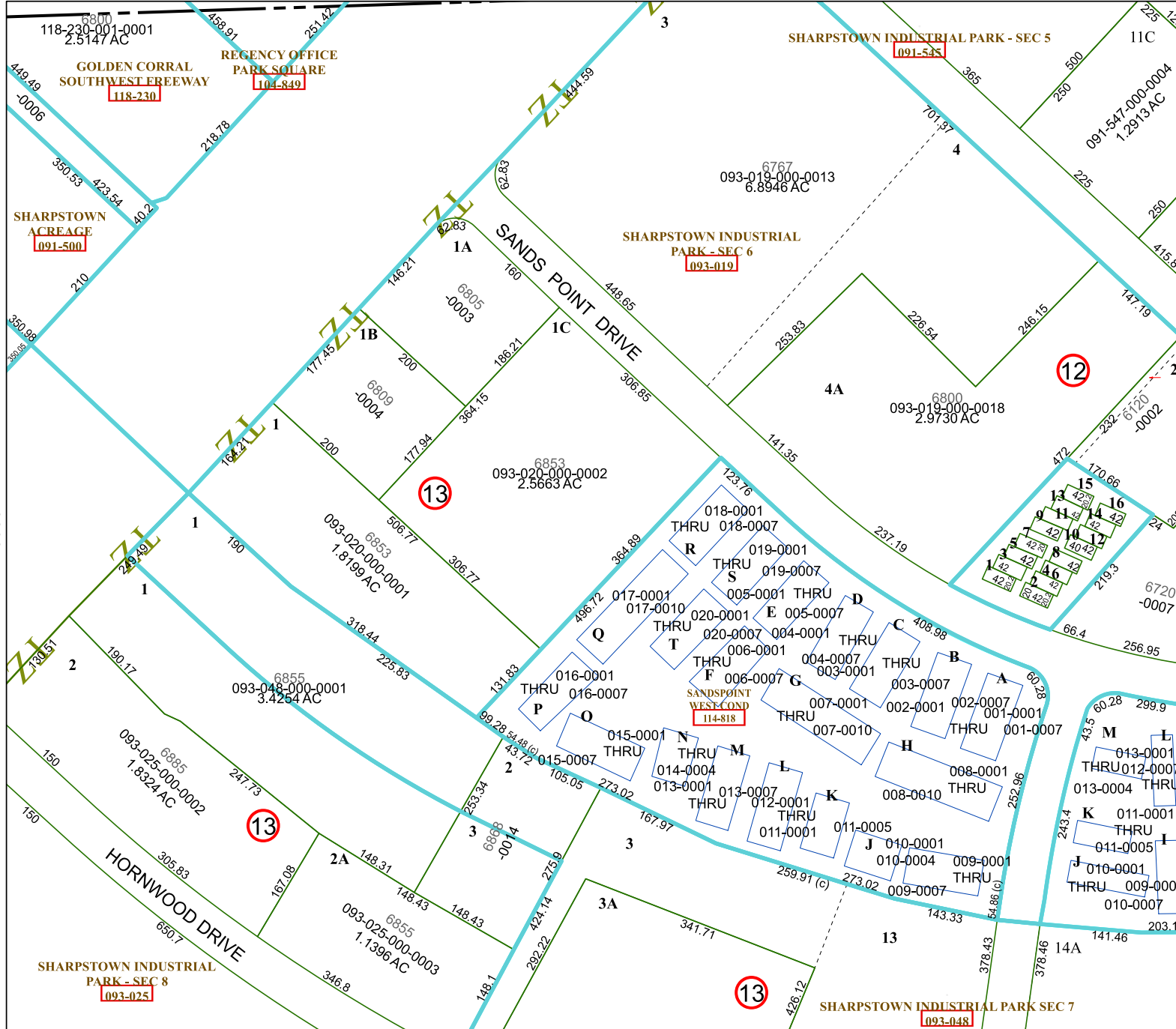
9	10	11	12	9
1	2	3	4	1
5	6	7	8	5

5055B11

5055D7

5055D2

5055D4



118-230-001-0001
2.5147 AC

GOLDEN CORRAL
SOUTHWEST EREWEAY
118-230

REGENCY OFFICE
PARK SQUARE
104-849

SHARPSTOWN
ACREAGE
091-500

SHARPSTOWN INDUSTRIAL PARK - SEC 5
091-535

SHARPSTOWN INDUSTRIAL
PARK - SEC 6
093-019

SANDS POINT DRIVE

SHARPSTOWN INDUSTRIAL
PARK - SEC 6
093-019

SHARPSTOWN INDUSTRIAL PARK - SEC 5
091-535

093-019-000-0013
6.8946 AC

11C

091-547-000-0004
1.2913 AC

13

12

13

093-020-000-0002
2.5663 AC

093-019-000-0018
2.9730 AC

018-0001 THRU 018-0007

019-0001 THRU 019-0007

005-0001 THRU 005-0007

017-0001 THRU 017-0010

020-0001 THRU 020-0007

006-0001 THRU 006-0007

016-0001 THRU 016-0007

015-0001 THRU 015-0007

014-0001 THRU 014-0004

013-0001 THRU 013-0007

012-0001 THRU 012-0004

011-0001 THRU 011-0005

010-0001 THRU 010-0004

009-0001 THRU 009-0007

008-0001 THRU 008-0010

007-0001 THRU 007-0010

006-0001 THRU 006-0007

005-0001 THRU 005-0007

004-0001 THRU 004-0007

003-0001 THRU 003-0007

002-0001 THRU 002-0007

001-0001 THRU 001-0007

093-025-000-0002
1.8324 AC

093-048-000-0001
3.4254 AC

093-020-000-0001
1.8199 AC

093-020-000-0002
2.5663 AC

093-020-000-0003
2.5663 AC

093-020-000-0004
2.5663 AC

093-020-000-0005
2.5663 AC

093-020-000-0006
2.5663 AC

093-025-000-0002
1.8324 AC

093-048-000-0001
3.4254 AC

093-020-000-0001
1.8199 AC

093-020-000-0002
2.5663 AC

093-020-000-0003
2.5663 AC

093-020-000-0004
2.5663 AC

093-020-000-0005
2.5663 AC

093-020-000-0006
2.5663 AC

SHARPSTOWN INDUSTRIAL
PARK - SEC 8
093-025

SHARPSTOWN INDUSTRIAL PARK SEC 7
093-048