

Harris Central Appraisal District



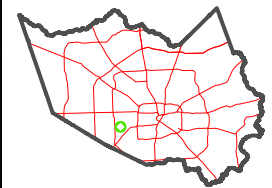
0 45 90 180 Feet

PUBLICATION DATE: 1/6/2023

Geospatial or map data maintained by the Harris Central Appraisal District is for informational purposes and may not have been prepared for or be suitable for legal, engineering, or surveying purposes. It does not represent an on-the-ground survey and only represents the approximate location of property boundaries.



MAP LOCATION



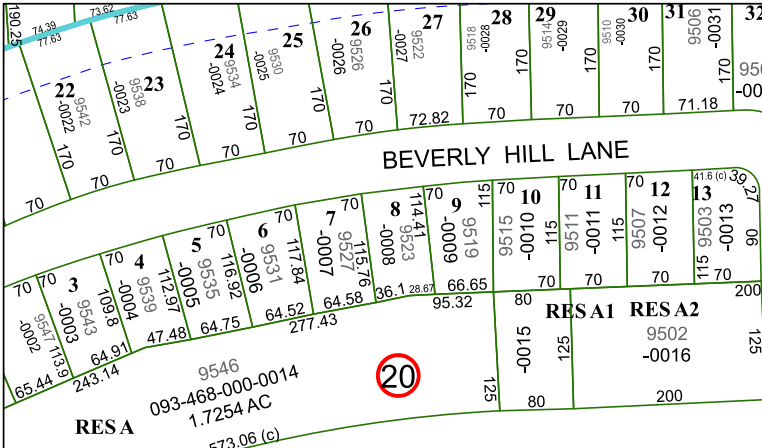
FACET 5056C9

7	8	5	6	7
11	12	9	10	11
3	4	1	2	3

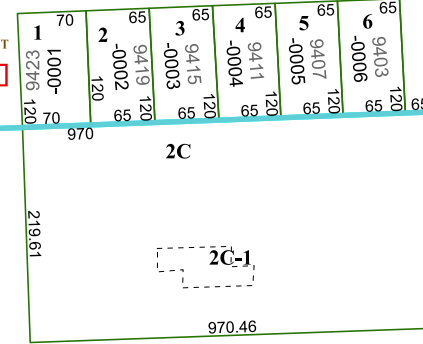
5056C5

13

BEVERLYHILL LANE



ROCKYRIDGE DRIVE



TANGLEWILDE

093-467

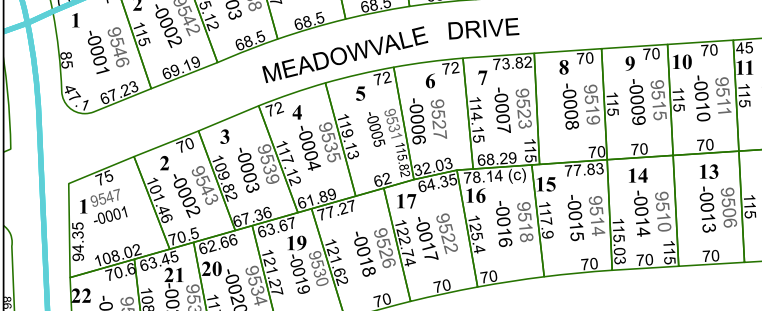
20



21

111-173-000-0001
9.5850 AC

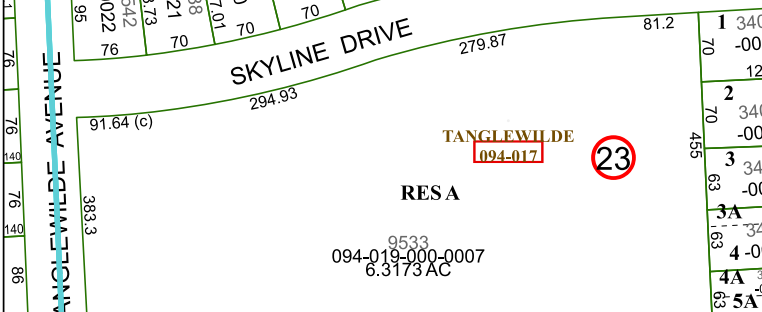
MEADOWVALE DRIVE



23

TANGLEWILDE

094-017



5055A1

RICHMOND SQUARE

111-173

RES B

111-173-000-0002
11.8500 AC

4956D12

5056C10