

Harris Central Appraisal District

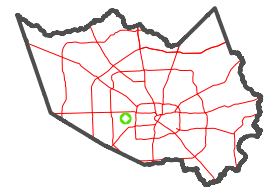


0 45 90 180 Feet

PUBLICATION DATE:
1/6/2023

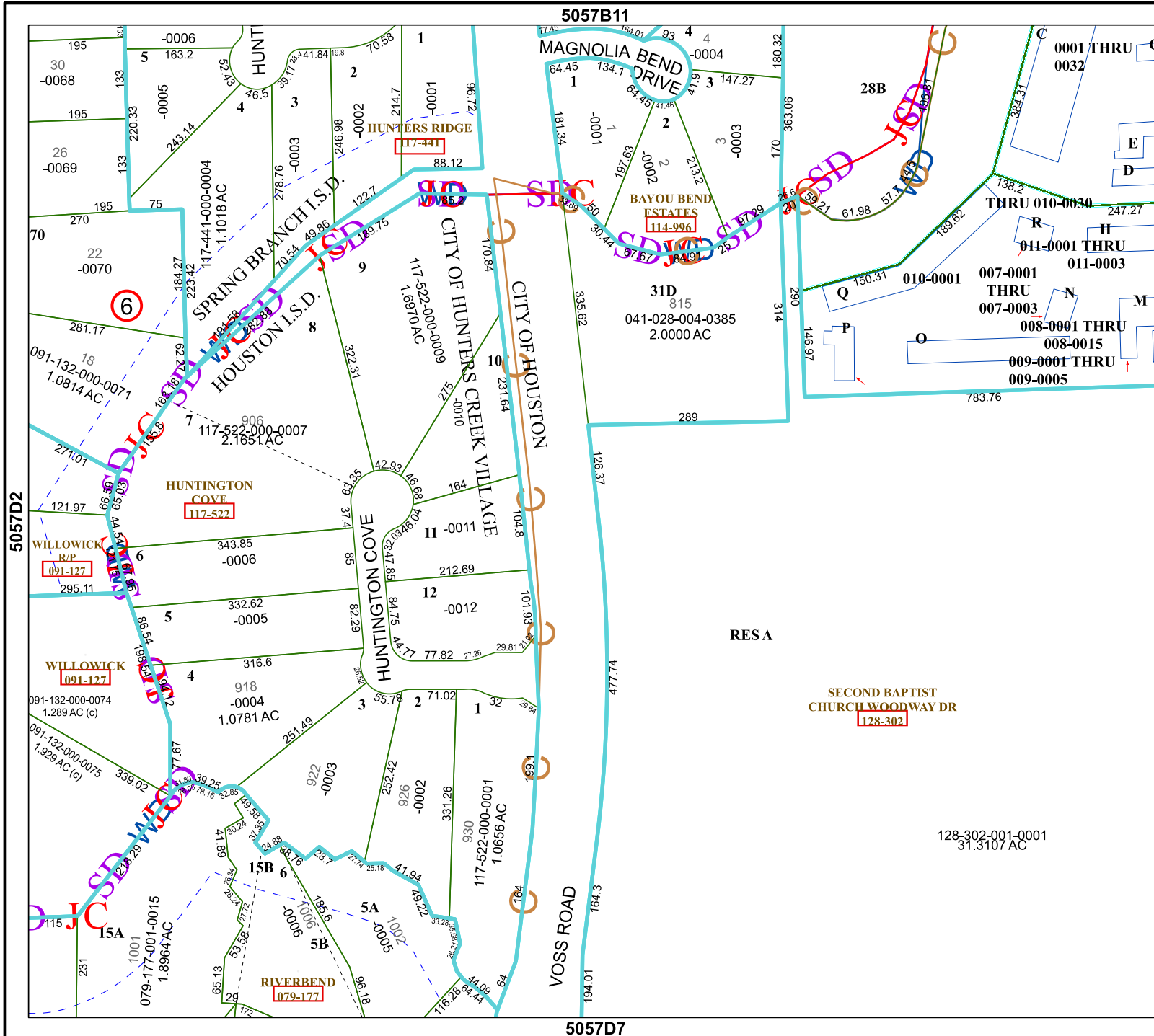
Geospatial or map data maintained by the Harris Central Appraisal District is for informational purposes and may not have been prepared for or be suitable for legal, engineering, or surveying purposes. It does not represent an on-the-ground survey and only represents the approximate location of property boundaries.

MAP LOCATION



FACET 5057D3

9	10	11	12	9
1	2	3	4	1
5	6	7	8	5



5057B11

5057D7

5057D2

5057D4

RES A

SECOND BAPTIST
CHURCH WOODWAY DR
128-302

128-302-001-0001
31.3107 AC

