

# Harris Central Appraisal District

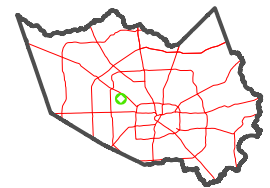


0 45 90 180 Feet

PUBLICATION DATE: 1/6/2023

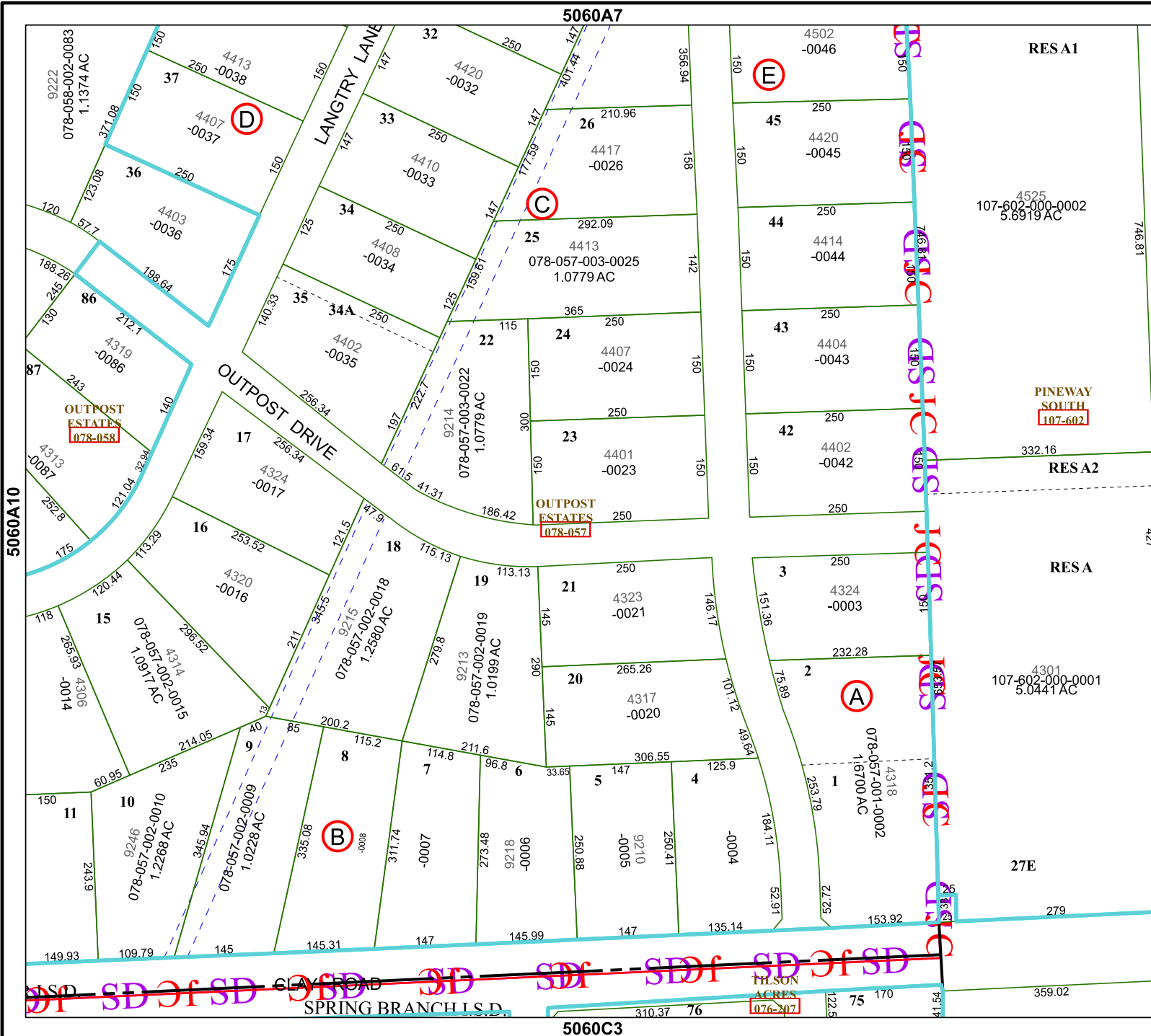
Geospatial or map data maintained by the Harris Central Appraisal District is for informational purposes and may not have been prepared for or be suitable for legal, engineering, or surveying purposes. It does not represent an on-the-ground survey and only represents the approximate location of property boundaries.

## MAP LOCATION



# FACET 5060A11

5	6	7	8	5
9	10	11	12	9
1	2	3	4	1



RES A1

RES A2

RES A

107-602-000-0001  
5.0441 AC

27E

TH. SON  
ACRES  
076-207

5060C3