

5061C12

Harris Central Appraisal District



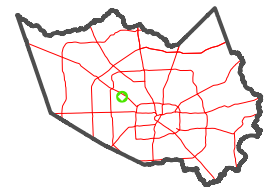
0 45 90 180 Feet

PUBLICATION DATE: 5/6/2024

Geospatial or map data maintained by the Harris Central Appraisal District is for informational purposes and may not have been prepared for or be suitable for legal, engineering, or surveying purposes. It does not represent an on-the-ground survey and only represents the approximate location of property boundaries.

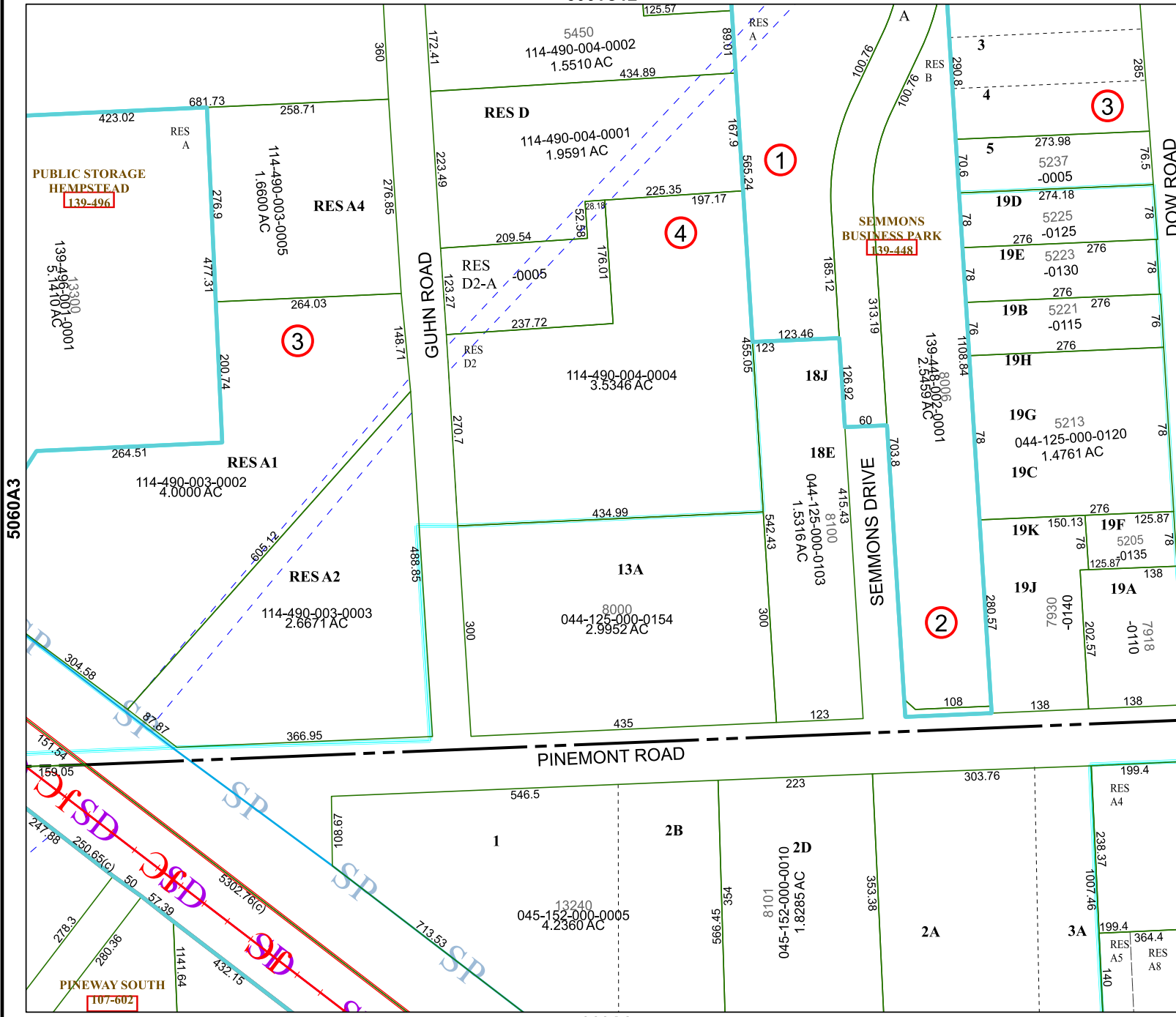


MAP LOCATION



FACET 5060A4

10	11	12	9	10
2	3	4	1	2
6	7	8	5	6



5060A8

PUBLIC STORAGE HEMPSTEAD 139-496

SEMMONS BUSINESS PARK 139-448

PINEWAY SOUTH 107-602

3

1

4

3

2