

5060A2

5060A10

5060A5

5060A6

# Harris Central Appraisal District

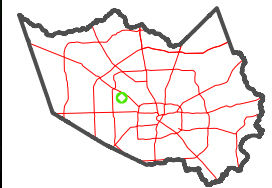


0 45 90 180 Feet

PUBLICATION DATE: 1/6/2023

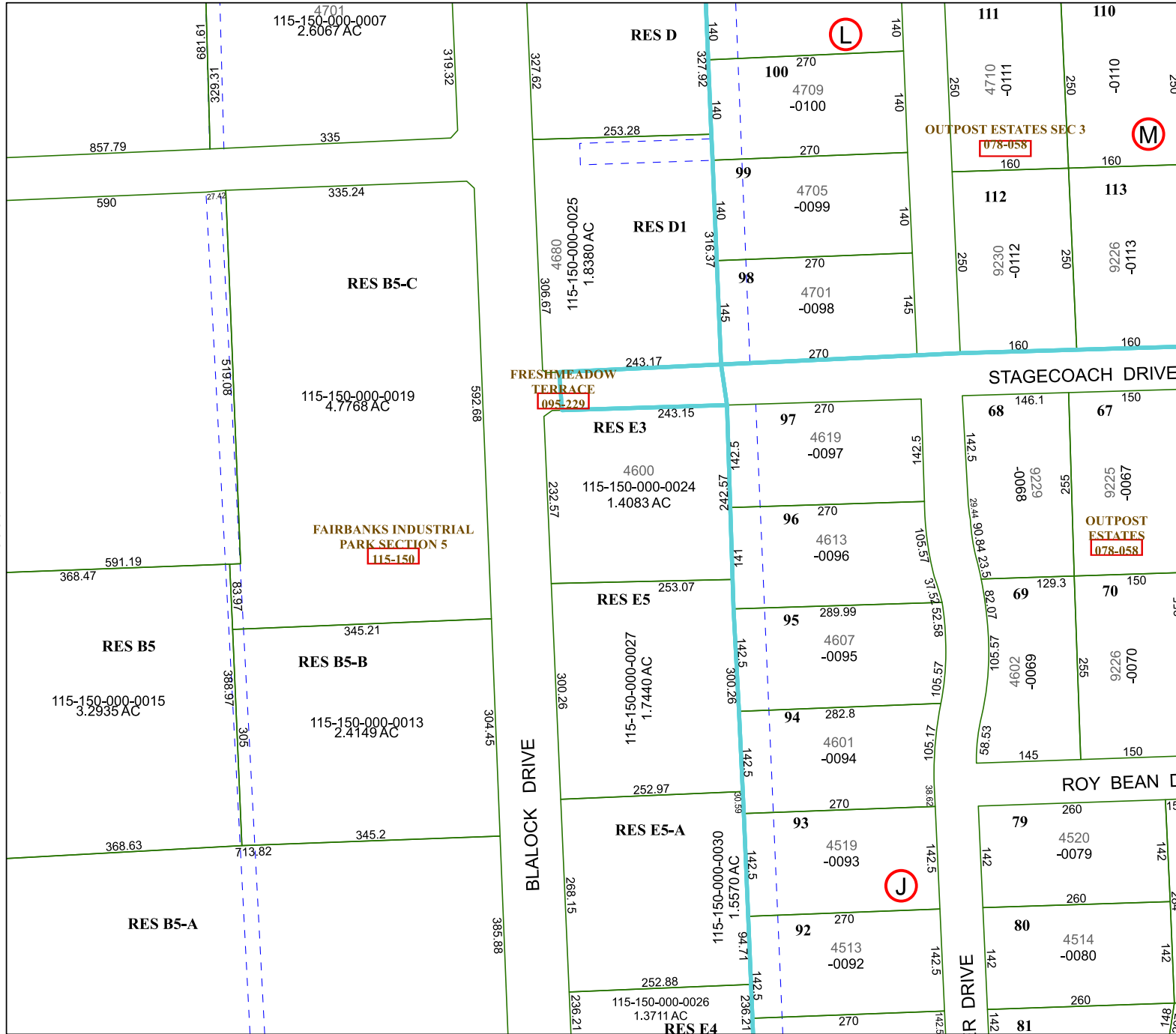
Geospatial or map data maintained by the Harris Central Appraisal District is for informational purposes and may not have been prepared for or be suitable for legal, engineering, or surveying purposes. It does not represent an on-the-ground survey and only represents the approximate location of property boundaries.

MAP LOCATION



## FACET 5060A6

4	1	2	3	4
8	5	6	7	8
12	9	10	11	12



(L)

(M)

(J)