

5063D7

5062B3

5063D10

Harris Central Appraisal District

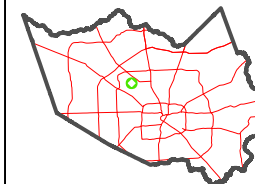


0 50 100 200 Feet

PUBLICATION DATE: 2/4/2026

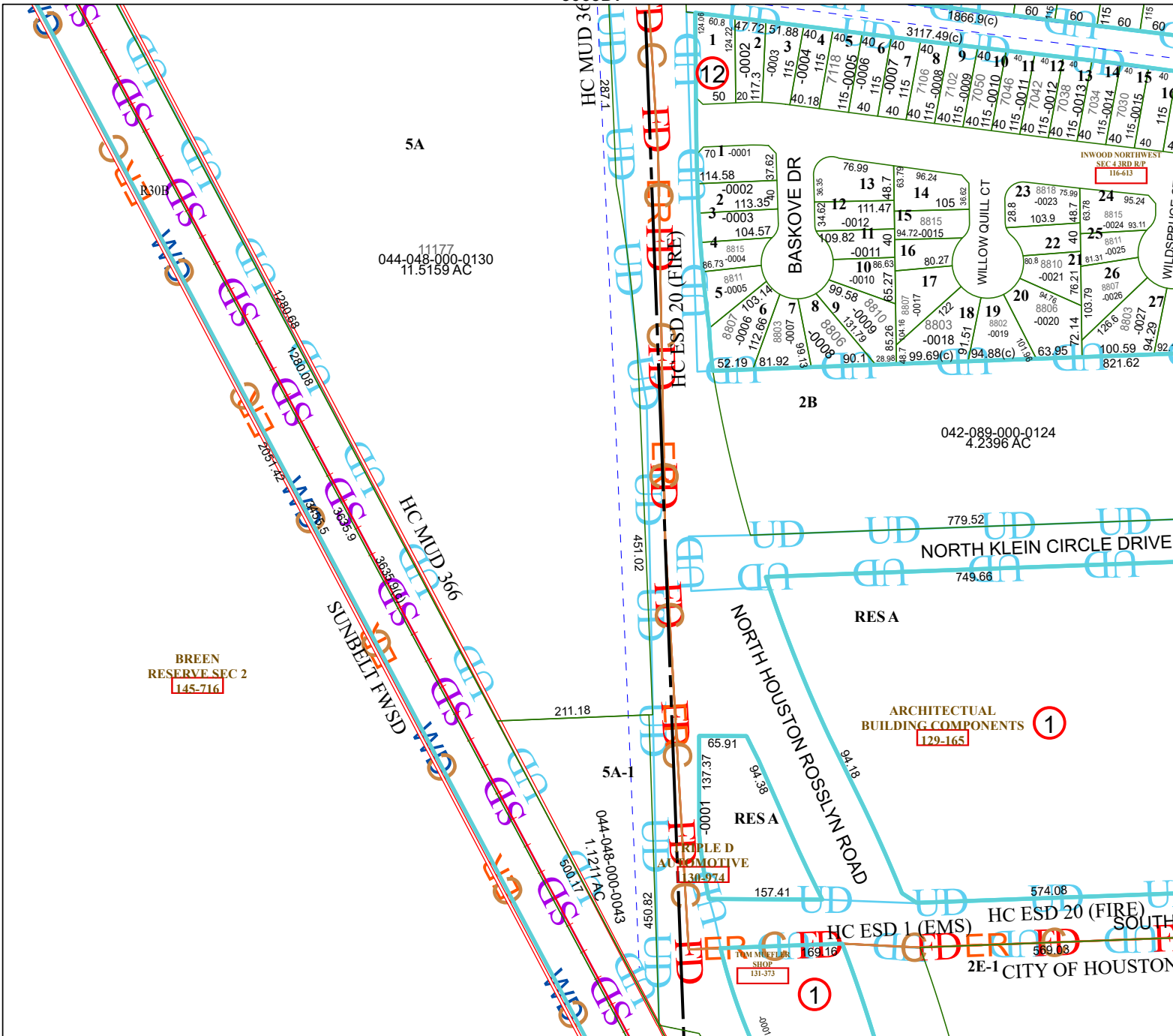
Geospatial or map data maintained by the Harris Central Appraisal District is for informational purposes and may not have been prepared for or be suitable for legal, engineering, or surveying purposes. It does not represent an on-the-ground survey and only represents the approximate location of property boundaries.

MAP LOCATION



FACET 5063D11

5	6	7	8	5
9	10	11	12	9
1	2	3	4	1



5A
044-048-000-0130
11.5159 AC

042-089-000-0124
4.2396 AC

BREEN RESERVE SEC 2
145-716

ARCHITECTURAL BUILDING COMPONENTS
129-165

TRIPLE D AUTOMOTIVE
130-974

HC ESD 20 (FIRE)
HC ESD 1 (EMS)
2E-1 CITY OF HOUSTON