

Harris Central Appraisal District

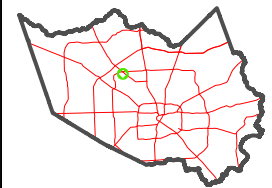


0 50 100 200 Feet

PUBLICATION DATE:
12/11/2025

Geospatial or map data maintained by the Harris Central Appraisal District is for informational purposes and may not have been prepared for or be suitable for legal, engineering, or surveying purposes. It does not represent an on-the-ground survey and only represents the approximate location of property boundaries.

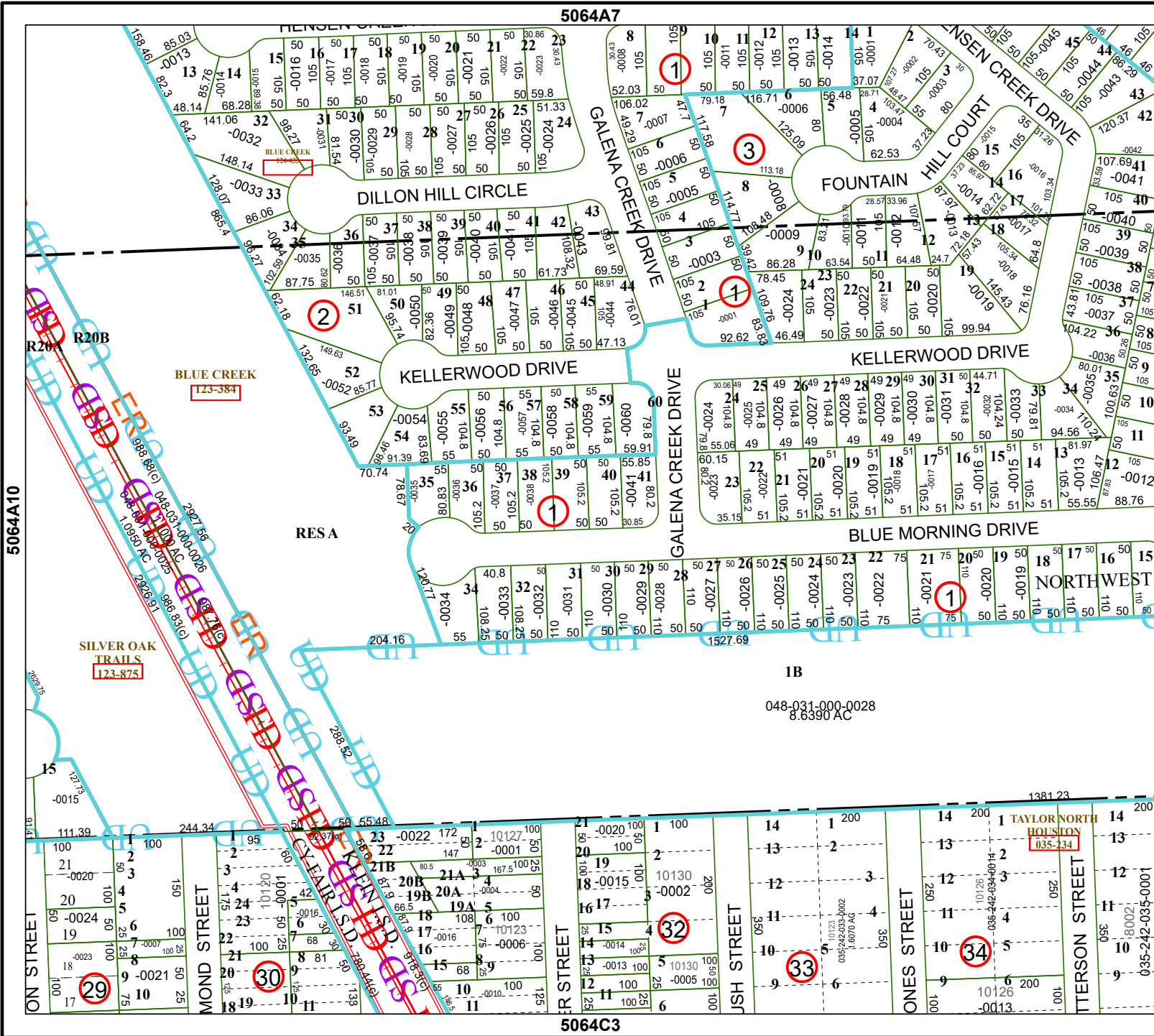
MAP LOCATION



FACET

5064A11

5	6	7	8	5
9	10	11	12	9
1	2	3	4	1



5064A7

5064C3

IB
048-031-000-0028
8.6390 AC

