

5064A4

RES A

132-903-001-0001
38.7250 AC

Harris Central Appraisal District

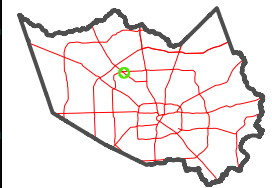


0 45 90 180 Feet

PUBLICATION DATE:
3/25/2024

Geospatial or map data maintained by the Harris Central Appraisal District is for informational purposes and may not have been prepared for or be suitable for legal, engineering, or surveying purposes. It does not represent an on-the-ground survey and only represents the approximate location of property boundaries.

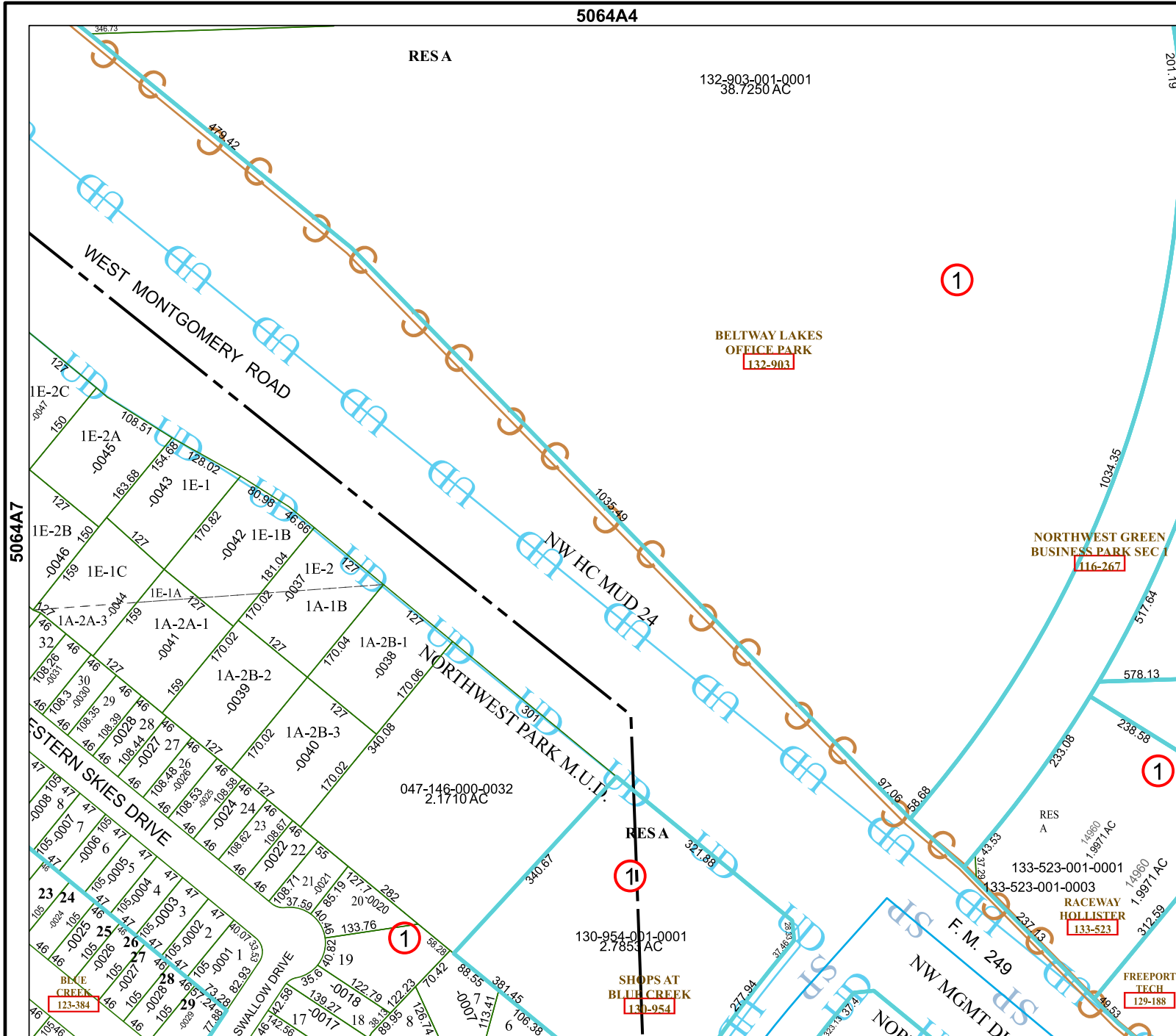
MAP LOCATION



FACET 5064A8

2	3	4	1	2
6	7	8	5	6
10	11	12	9	10

5064A12



5064A7

5064B5