

# Harris Central Appraisal District

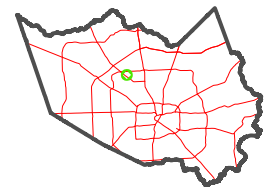


0 45 90 180 Feet

PUBLICATION DATE:  
12/30/2023

Geospatial or map data maintained by the Harris Central Appraisal District is for informational purposes and may not be suitable for legal, engineering, or surveying purposes. It does not represent an on-the-ground survey and only represents the approximate location of property boundaries.

MAP LOCATION

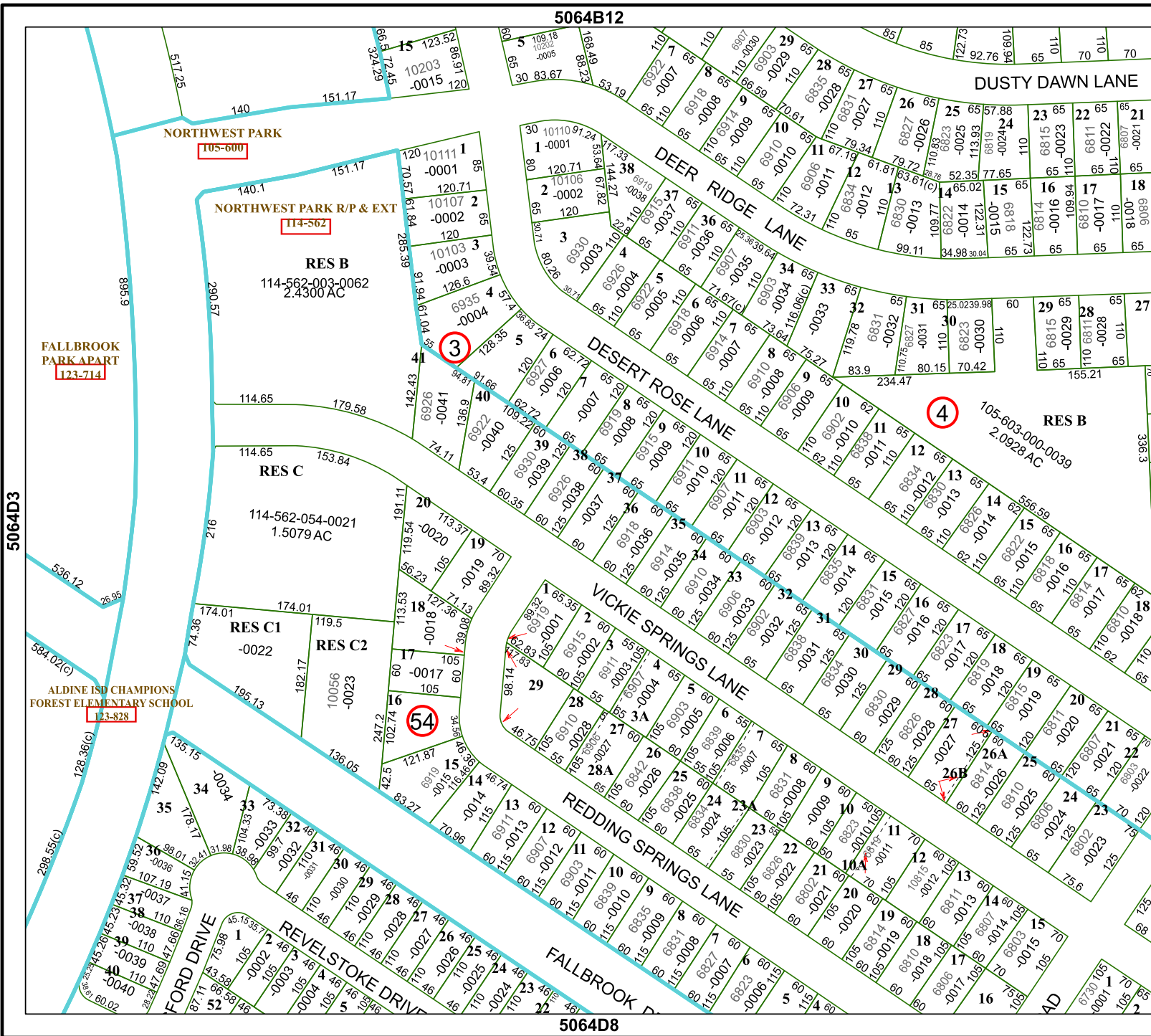


## FACET 5064D4

10	11	12	9	10
2	3	4	1	2
6	7	8	5	6

5064B12

5064D8



FALLBROOK PARK APART  
123-714

ALDINE ISD CHAMPIONS FOREST ELEMENTARY SCHOOL  
123-828

NORTHWEST PARK  
105-600

NORTHWEST PARK R/P & EXT  
114-562

RES B  
114-562-003-0062  
2.4300 AC

RES C  
114-562-054-0021  
1.5079 AC

RES C1  
-0022

RES C2  
10056  
-0023

RES B  
105-603-000-0039  
2.0928 AC