

# Harris Central Appraisal District

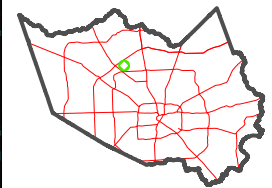


0 45 90 180 Feet

PUBLICATION DATE: 4/8/2024

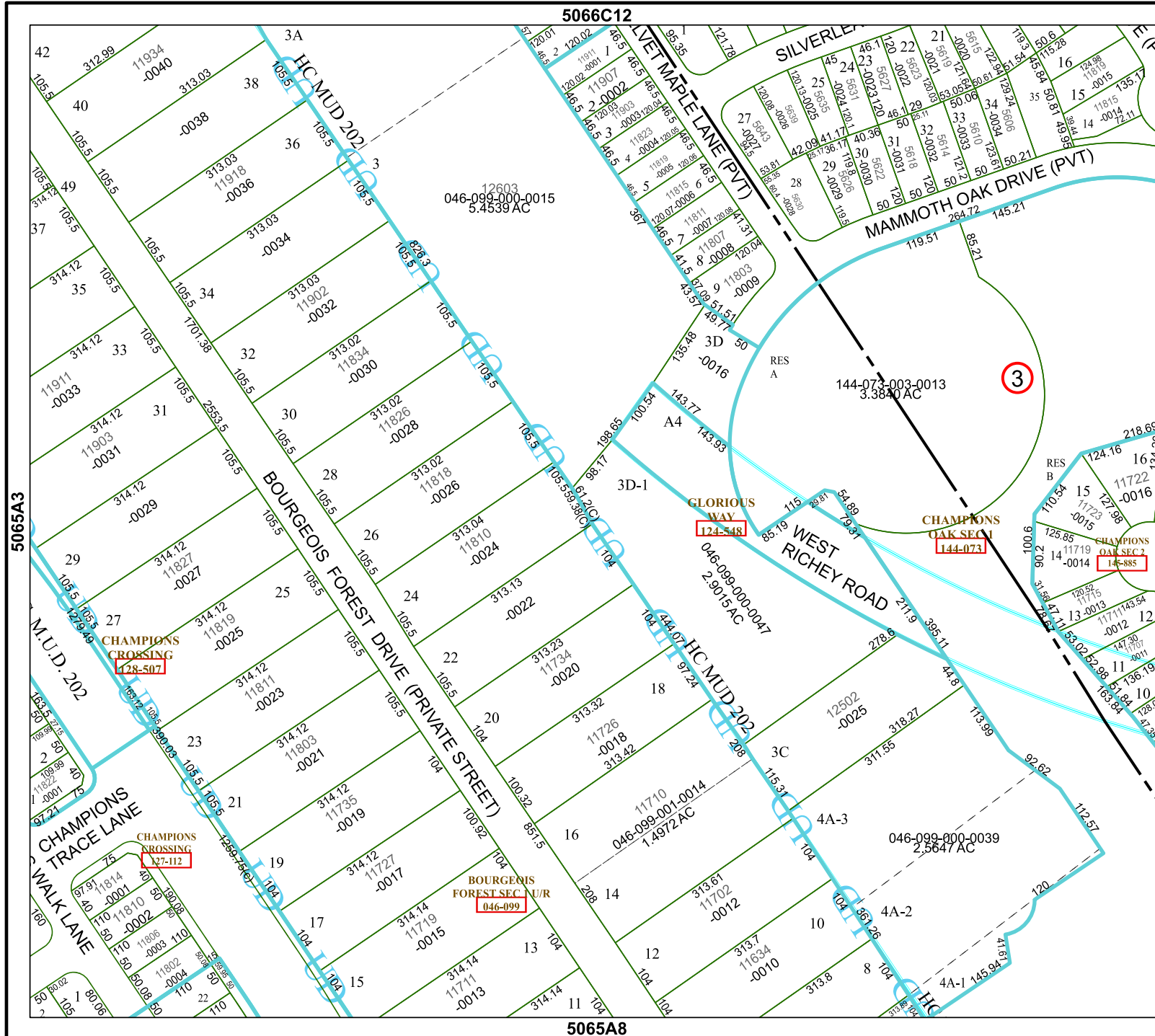
Geospatial or map data maintained by the Harris Central Appraisal District is for informational purposes and may not have been prepared for or be suitable for legal, engineering, or surveying purposes. It does not represent an on-the-ground survey and only represents the approximate location of property boundaries.

MAP LOCATION



## FACET 5065A4

10	11	12	9	10
2	3	4	1	2
6	7	8	5	6



5066C12

5065A8

5065A3

5065B1