

# Harris Central Appraisal District

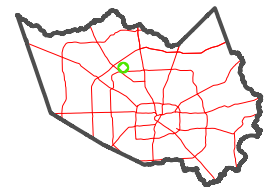


0 45 90 180 Feet

PUBLICATION DATE:  
12/30/2023

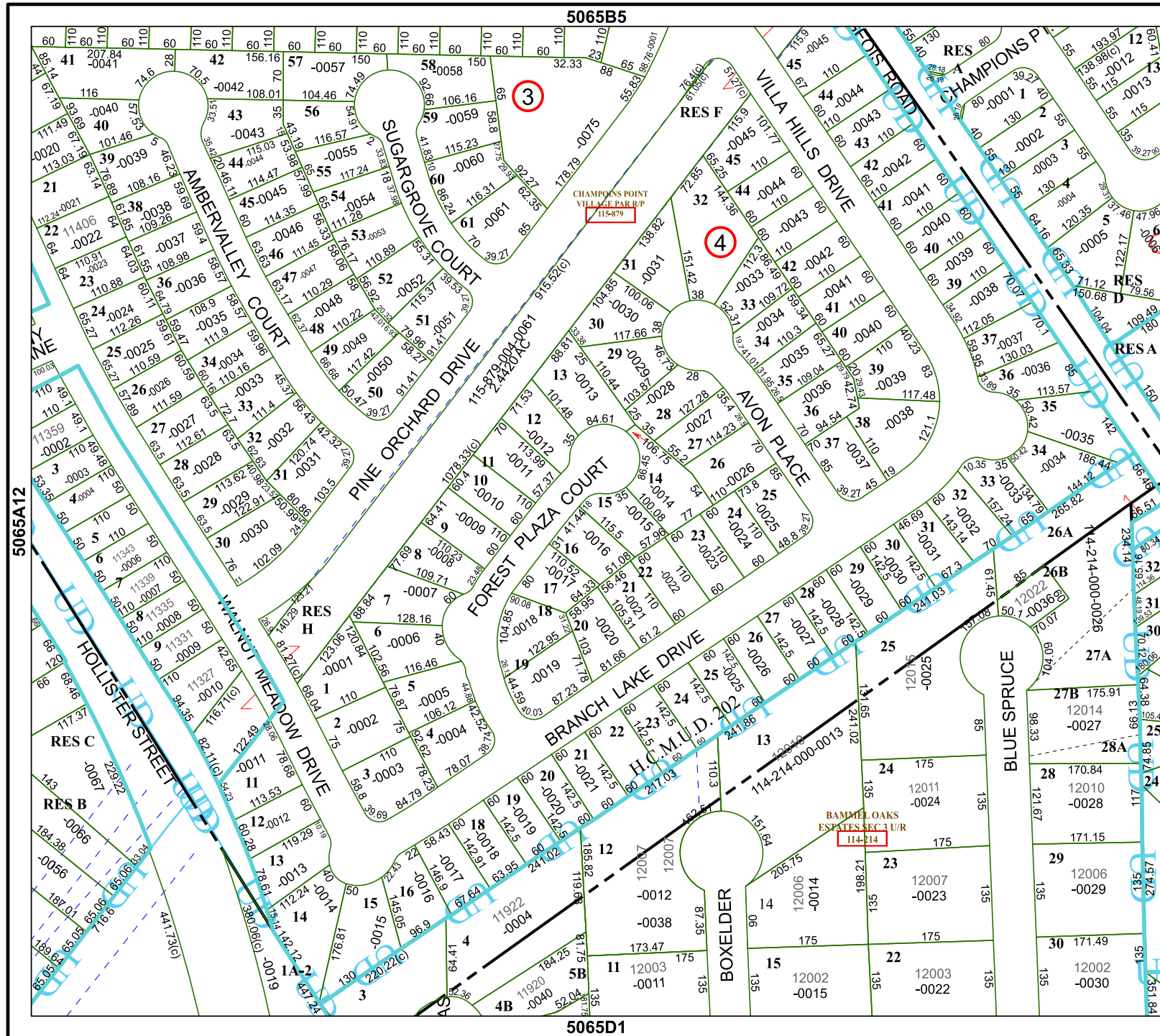
Geospatial or map data maintained by the Harris Central Appraisal District is for informational purposes and may not have been prepared for or be suitable for legal, engineering, or surveying purposes. It does not represent an on-the-ground survey and only represents the approximate location of property boundaries.

MAP LOCATION



## FACET 5065B9

7	8	5	6	7
11	12	9	10	11
3	4	1	2	3



5065B5

5065D1

5065A12

5065B10

BAMMEL OAKS  
ESTATES SEC 3 U/R  
114-214

CHAMPOINS POINT  
VILLAGE PAR RP  
115-879