

Harris Central Appraisal District

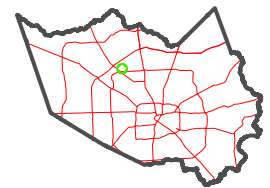


0 45 90 180 Feet

PUBLICATION DATE:
1/6/2023

Geospatial or map data maintained by the Harris Central Appraisal District is for informational purposes and may not have been prepared for or be suitable for legal, engineering, or surveying purposes. It does not represent an on-the-ground survey and only represents the approximate location of property boundaries.

MAP LOCATION

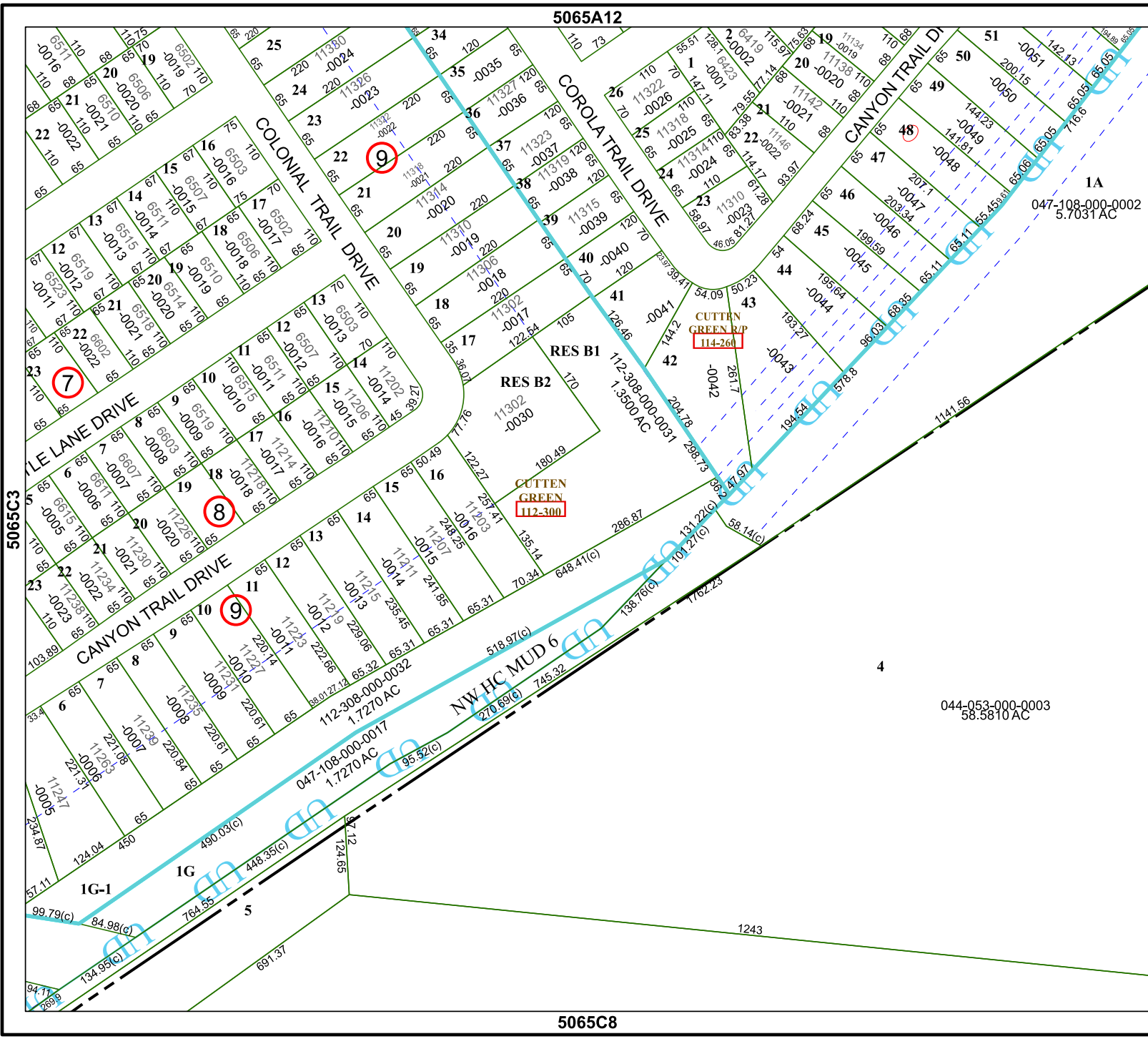


FACET 5065C4

10	11	12	9	10
2	3	4	1	2
6	7	8	5	6

5065A12

5065C8



1A
047-108-000-0002
5.7031 AC

044-053-000-0003
58.5810 AC

5065C3

5065D1

