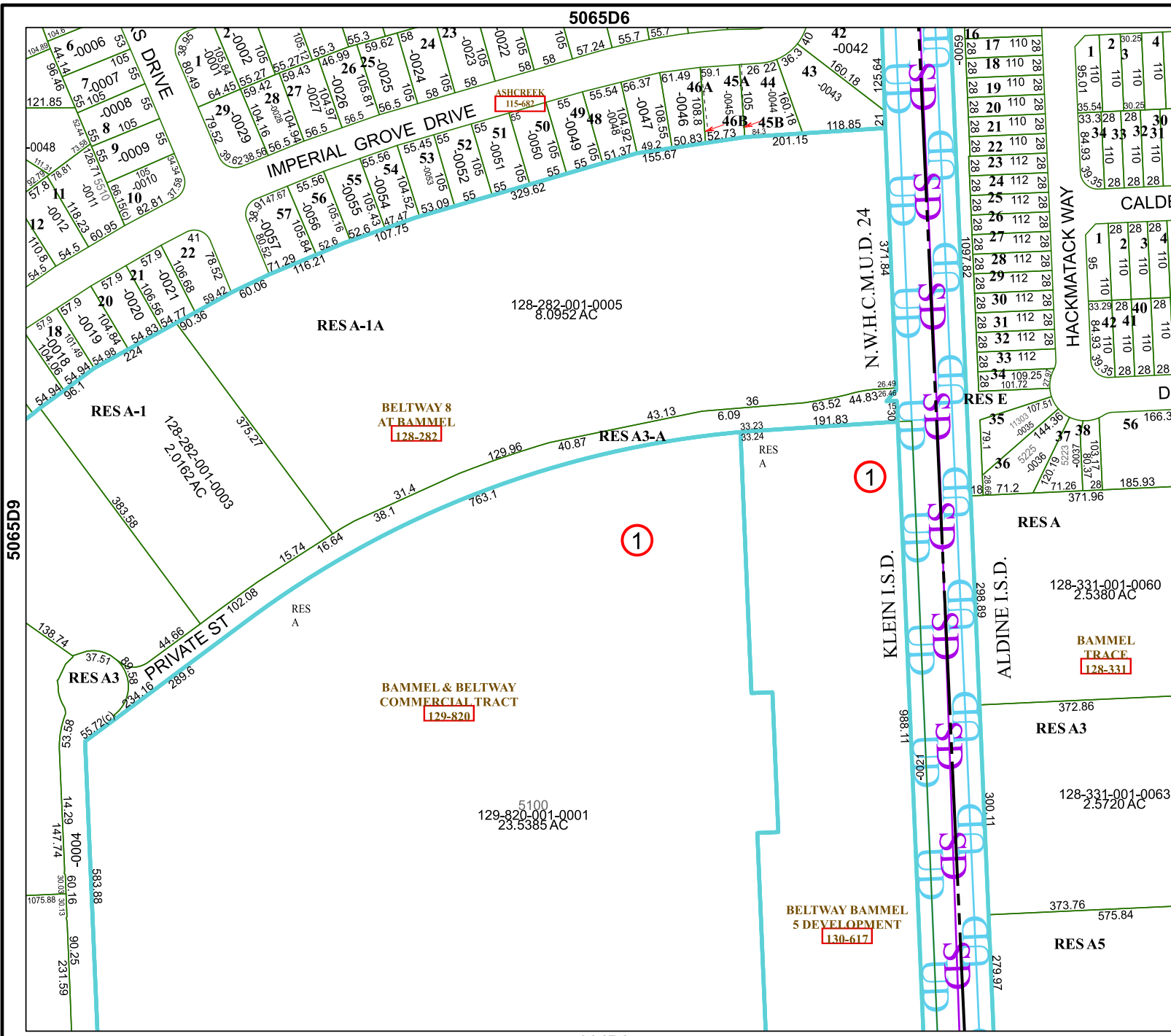
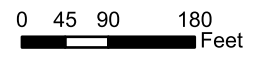


5065D6

5064B2



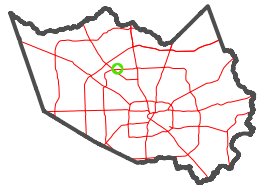
Harris Central Appraisal District



PUBLICATION DATE: 1/6/2023

Geospatial or map data maintained by the Harris Central Appraisal District is for informational purposes and may not have been prepared for or be suitable for legal, engineering, or surveying purposes. It does not represent an on-the-ground survey and only represents the approximate location of property boundaries.

MAP LOCATION



FACET 5065D10

8	5	6	7	8
12	9	10	11	12
4	1	2	3	4