

Harris Central Appraisal District

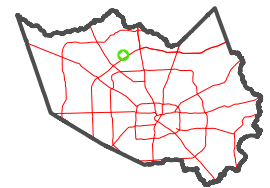


0 45 90 180 Feet

PUBLICATION DATE:
1/6/2023

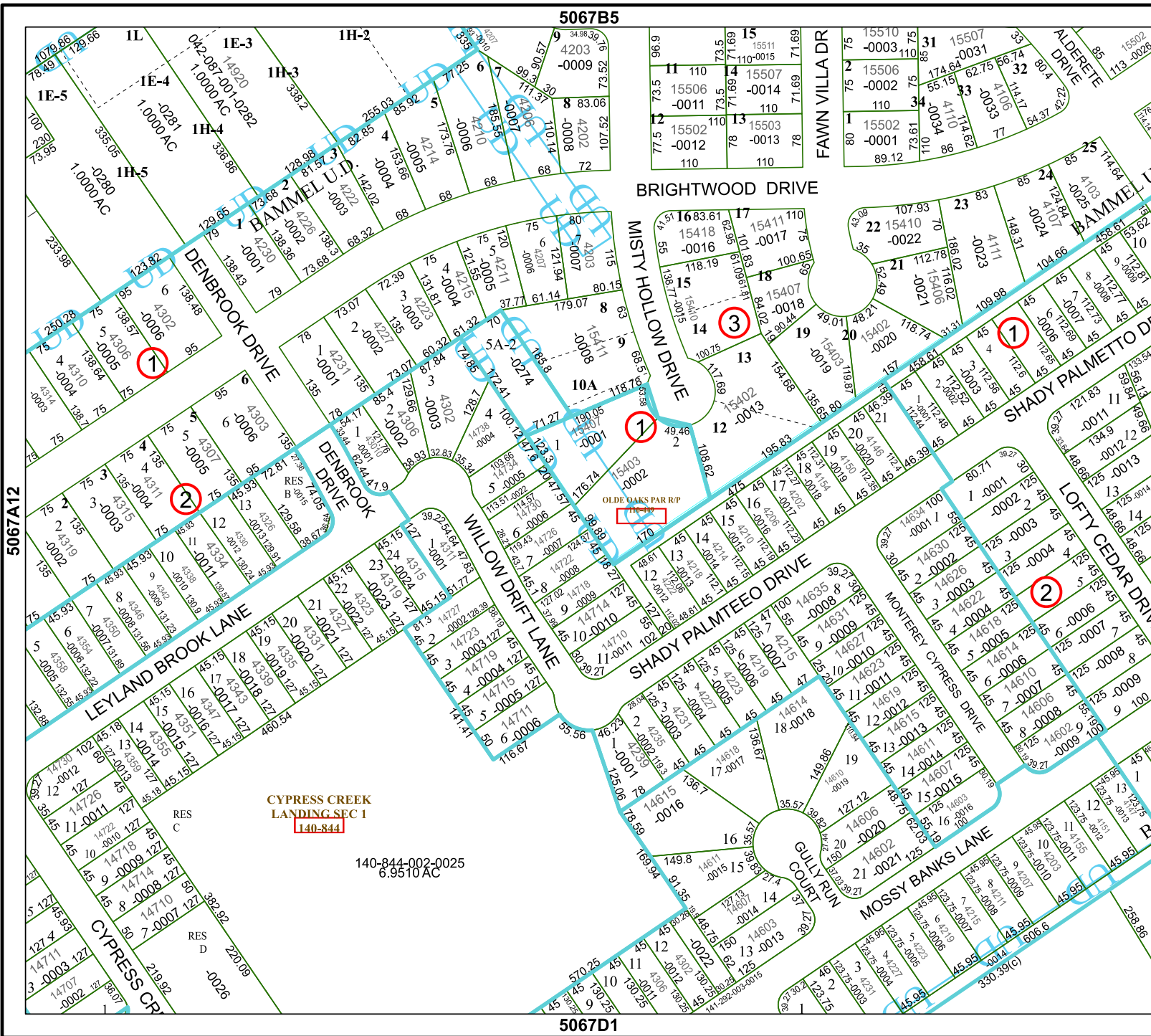
Geospatial or map data maintained by the Harris Central Appraisal District is for informational purposes and may not have been prepared for or be suitable for legal, engineering, or surveying purposes. It does not represent an on-the-ground survey and only represents the approximate location of property boundaries.

MAP LOCATION



FACET 5067B9

7	8	5	6	7
11	12	9	10	11
3	4	1	2	3



5067A12

5067B5

5067D1

5067B10

CYPRESS CREEK LANDING SEC 1
140-844
140-844-002-025
6.9510 AC