

Harris Central Appraisal District



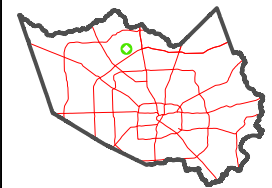
0 45 90 180 Feet

PUBLICATION DATE:
3/25/2024

Geospatial or map data maintained by the Harris Central Appraisal District is for informational purposes and may not have been prepared for or be suitable for legal, engineering, or surveying purposes. It does not represent an on-the-ground survey and only represents the approximate location of property boundaries.



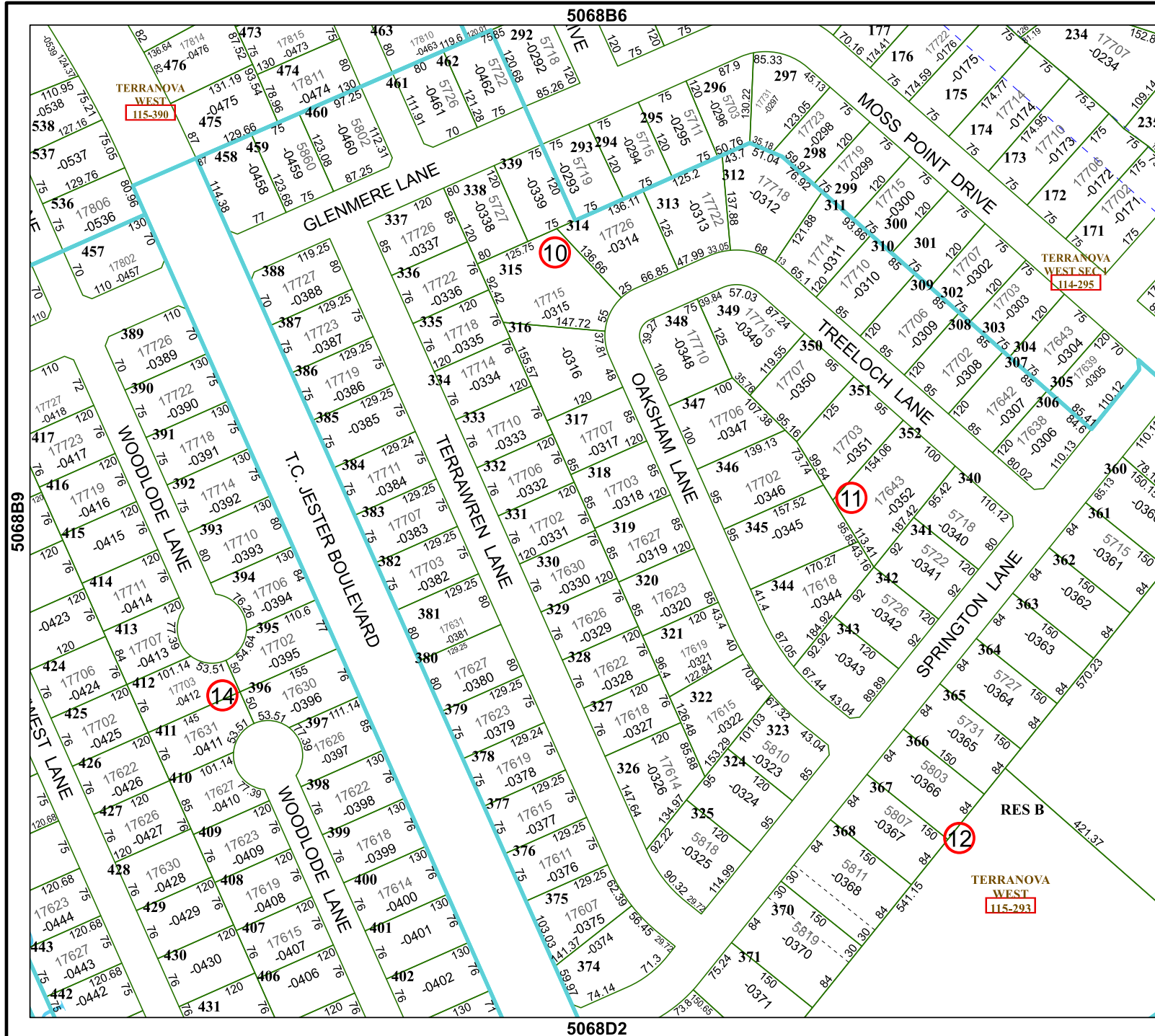
MAP LOCATION



FACET

5068B10

8	5	6	7	8
12	9	10	11	12
4	1	2	3	4



5068B6

5068D2

TERRANOVA WEST
115-390

TERRANOVA WEST SEC
114-295

TERRANOVA WEST
115-293

RES B