

Harris Central Appraisal District



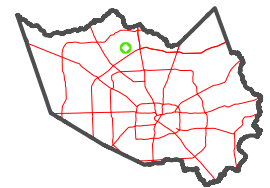
0 45 90 180 Feet

PUBLICATION DATE:
3/25/2024

Geospatial or map data maintained by the Harris Central Appraisal District is for informational purposes and may not have been prepared for or be suitable for legal, engineering, or surveying purposes. It does not represent an on-the-ground survey and only represents the approximate location of property boundaries.

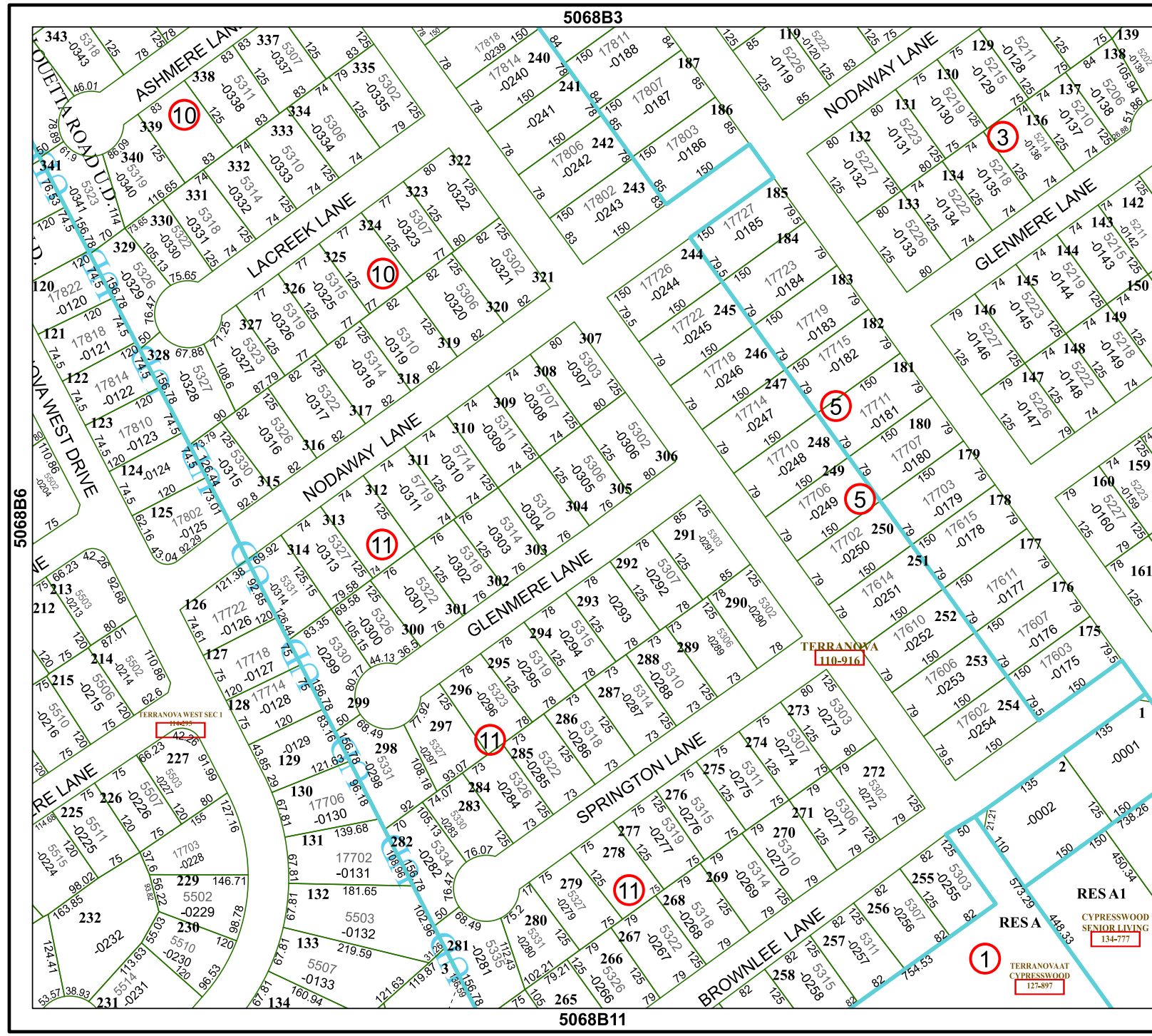


MAP LOCATION



FACET 5068B7

1	2	3	4	1
5	6	7	8	5
9	10	11	12	9



5068B3

5068B11

5068B8

5068B6

RESA 1
CYPRESSWOOD SENIOR LIVING
134-777

RESA
TERRANOVA AT CYPRESSWOOD
127-897