

Harris Central Appraisal District



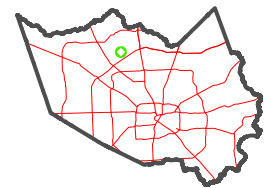
0 45 90 180 Feet

PUBLICATION DATE:
1/6/2023

Geospatial or map data maintained by the Harris Central Appraisal District is for informational purposes and may not have been prepared for or be suitable for legal, engineering, or surveying purposes. It does not represent an on-the-ground survey and only represents the approximate location of property boundaries.



MAP LOCATION



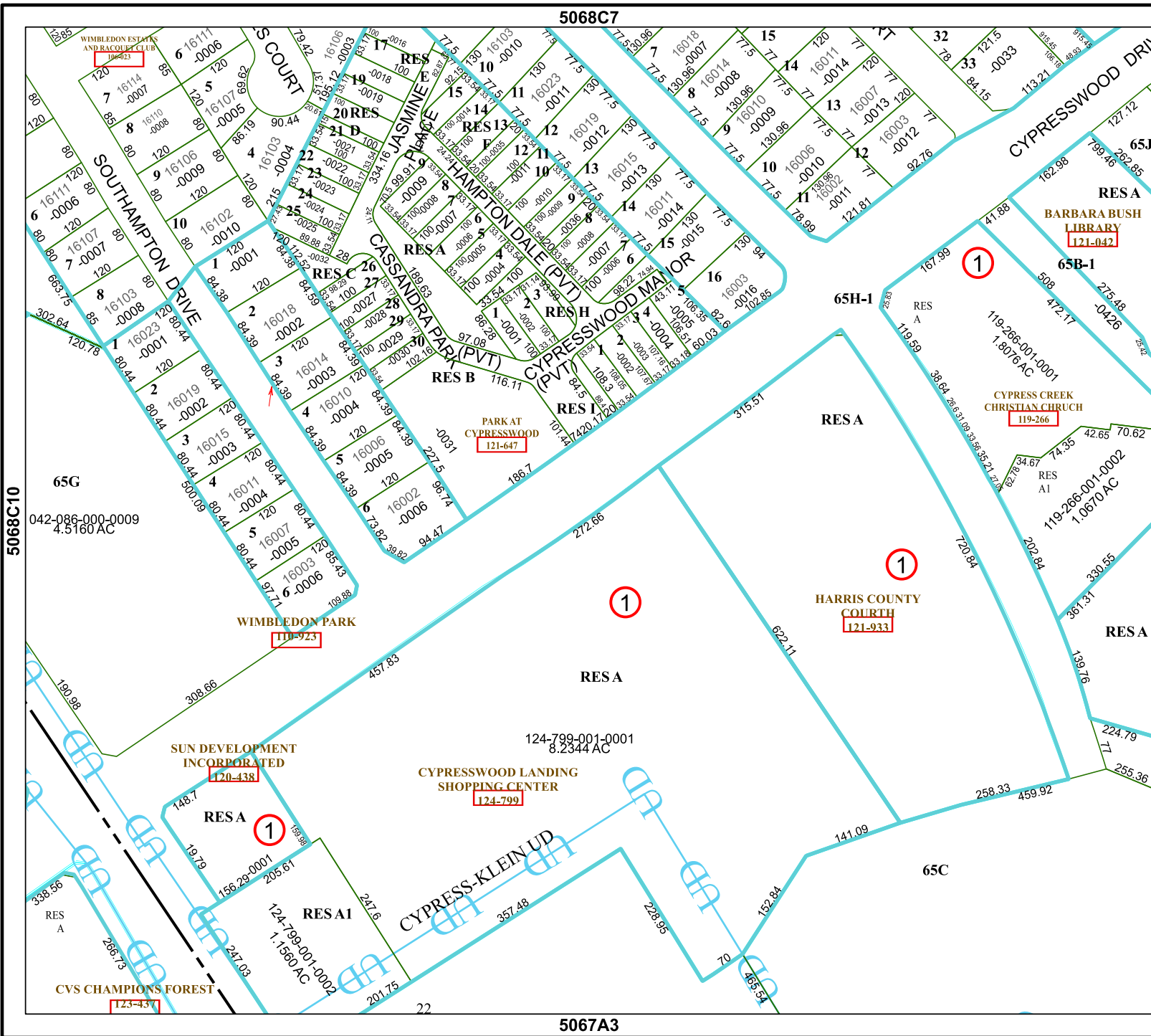
FACET

5068C11

5	6	7	8	5
9	10	11	12	9
1	2	3	4	1

5068C7

5067A3



5068C10

5068C12

65C

65G

042-086-000-0009
4.5160 AC

124-799-001-0001
8.2344 AC

CYPRESSWOOD LANDING
SHOPPING CENTER
124-799

SUN DEVELOPMENT
INCORPORATED
120-438

RESA

RESA1

124-799-001-0002
1.1560 AC

CVS CHAMPIONS FOREST
123-437

RESA
BARBARA BUSH
LIBRARY
121-042

CYPRESS CREEK
CHRISTIAN CHURCH
119-266

HARRIS COUNTY
COURTH
121-933

WIMBLEDON PARK
110-923

PARK AT
CYPRESSWOOD
121-647

WIMBLEDON ESTATES
AND RACQUET CLUB
106-013

SOUTHAMPTON DRIVE

CYPRESSWOOD DRIVE

CYPRESS-KLEIN UP

HAMPTONDALE (PVT)

CASSANDRA PARK (PVT)

CYPRESSWOOD MAJOR

CYPRESSWOOD

PARK AT CYPRESSWOOD

CYPRESSWOOD

CYPRESSWOOD

CYPRESSWOOD

CYPRESSWOOD

CYPRESSWOOD

CYPRESSWOOD

CYPRESSWOOD

CYPRESSWOOD

CYPRESSWOOD

CYPRESSWOOD

CYPRESSWOOD

CYPRESSWOOD