

Harris Central Appraisal District

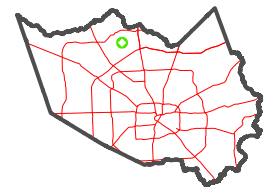


0 45 90 180 Feet

PUBLICATION DATE: 1/6/2023

Geospatial or map data maintained by the Harris Central Appraisal District is for informational purposes and may not have been prepared for or be suitable for legal, engineering, or surveying purposes. It does not represent an on-the-ground survey and only represents the approximate location of property boundaries.

MAP LOCATION

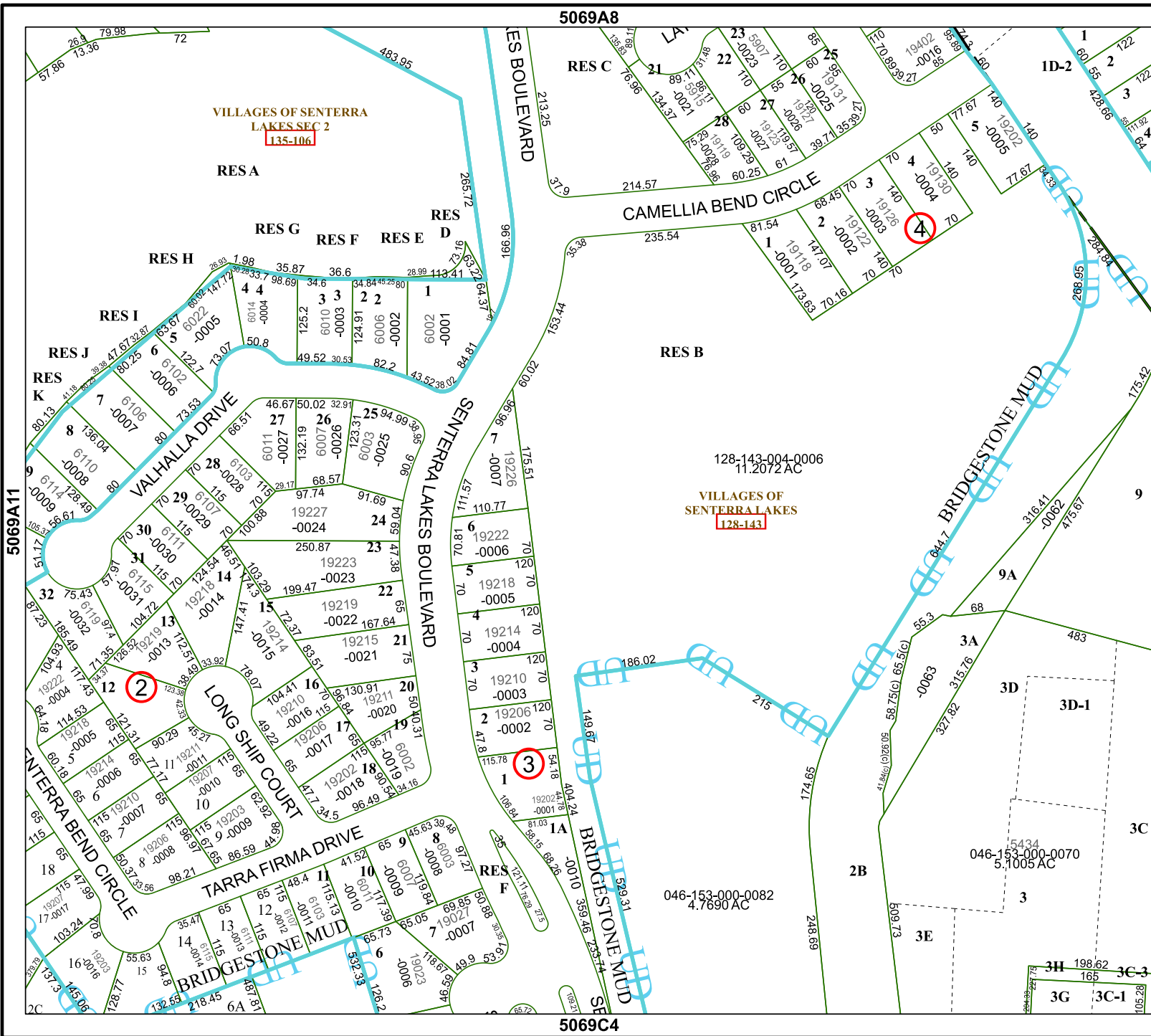


FACET 5069A12

6	7	8	5	6
10	11	12	9	10
2	3	4	1	2

5069A8

5069C4



VILLAGES OF SENTERRA LAKES SEC 2
135-106

128-143-004-0006
11.2072 AC
VILLAGES OF SENTERRA LAKES
128-143

046-153-000-0082
4.7690 AC

046-153-000-0070
5.1005 AC