

Harris Central Appraisal District

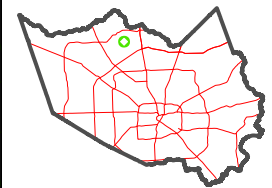


0 45 90 180 Feet

PUBLICATION DATE: 1/6/2023

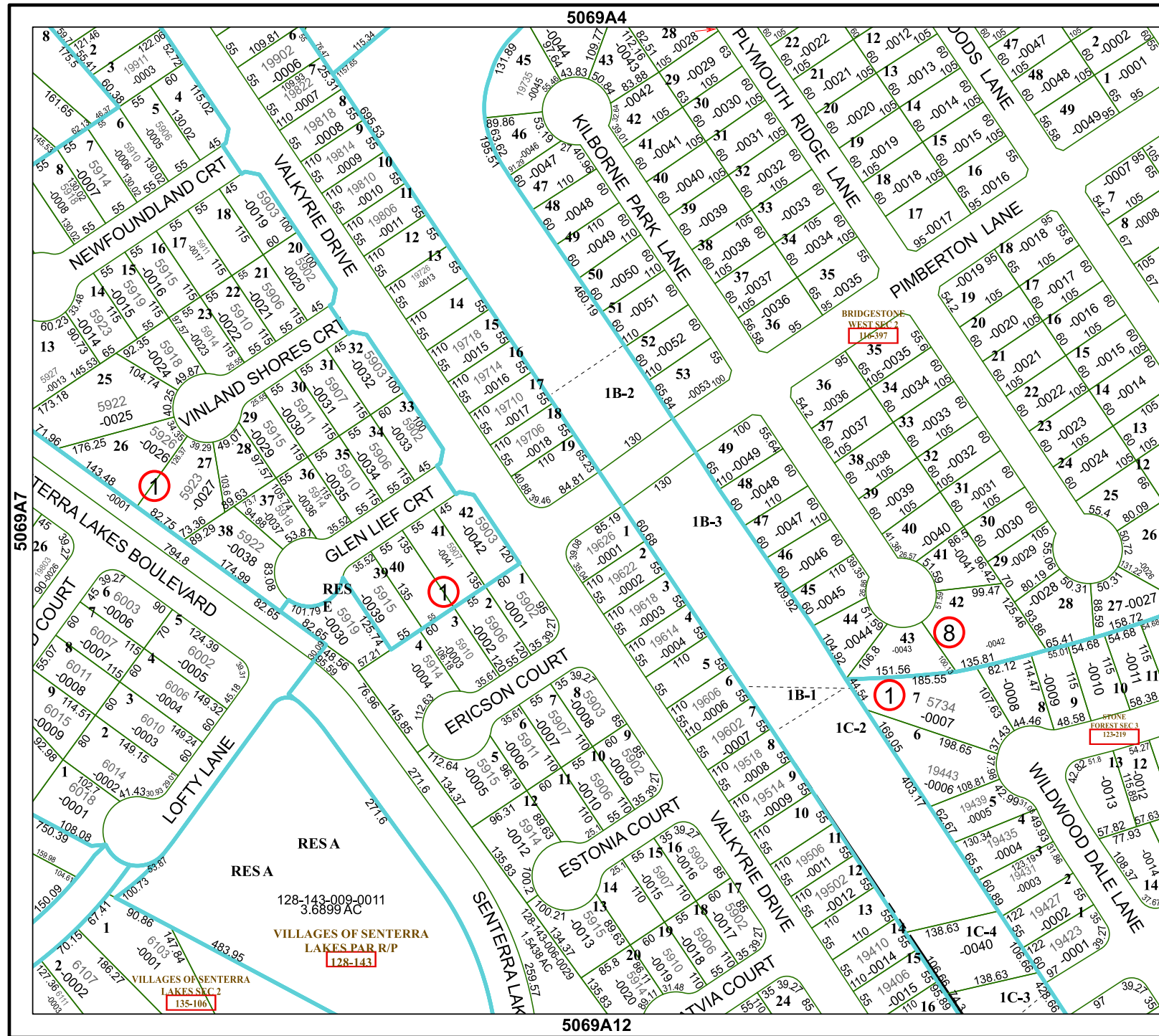
Geospatial or map data maintained by the Harris Central Appraisal District is for informational purposes and may not have been prepared for or be suitable for legal, engineering, or surveying purposes. It does not represent an on-the-ground survey and only represents the approximate location of property boundaries.

MAP LOCATION



FACET 5069A8

2	3	4	1	2
6	7	8	5	6
10	11	12	9	10



RESA
RESA
128-143-009-0011
3.6899 AC
VILLAGES OF SENTERRA
LAKES PAR R/P
128-143

VILLAGES OF SENTERRA
LAKES SEC 2
135-100

5069A12