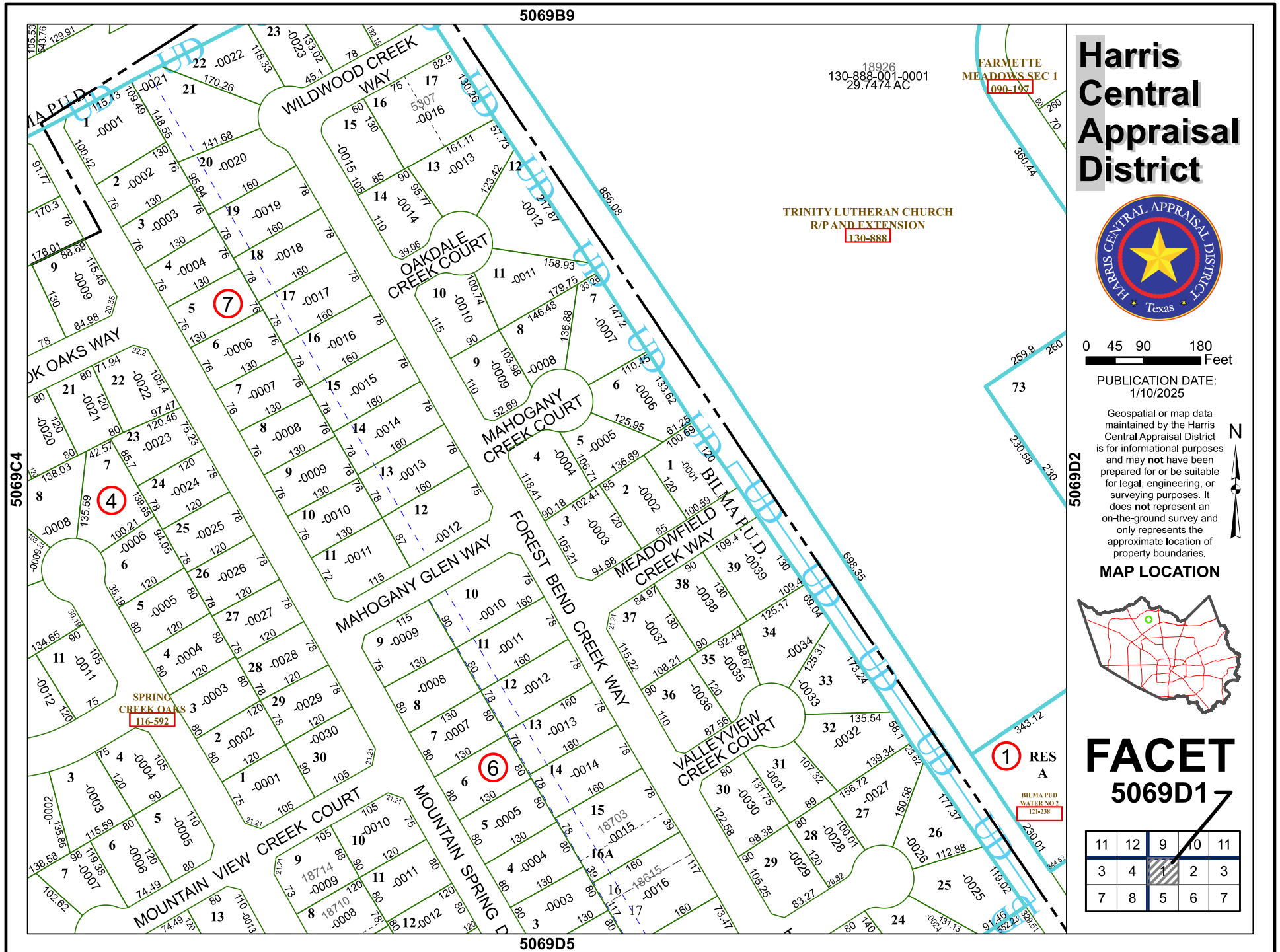


5069B9

5069D5



Harris Central Appraisal District

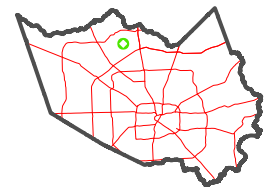


0 45 90 180 Feet

PUBLICATION DATE: 1/10/2025

Geospatial or map data maintained by the Harris Central Appraisal District is for informational purposes and may not have been prepared for or be suitable for legal, engineering, or surveying purposes. It does not represent an on-the-ground survey and only represents the approximate location of property boundaries.

MAP LOCATION



FACET 5069D1

11	12	9	10	11
3	4	1	2	3
7	8	5	6	7