

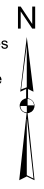
# Harris Central Appraisal District



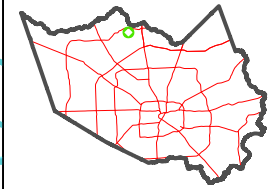
0 45 90 180 Feet

PUBLICATION DATE: 3/13/2023

Geospatial or map data maintained by the Harris Central Appraisal District is for informational purposes and may not be prepared for or be suitable for legal, engineering, or surveying purposes. It does not represent an on-the-ground survey and only represents the approximate location of property boundaries.



## MAP LOCATION

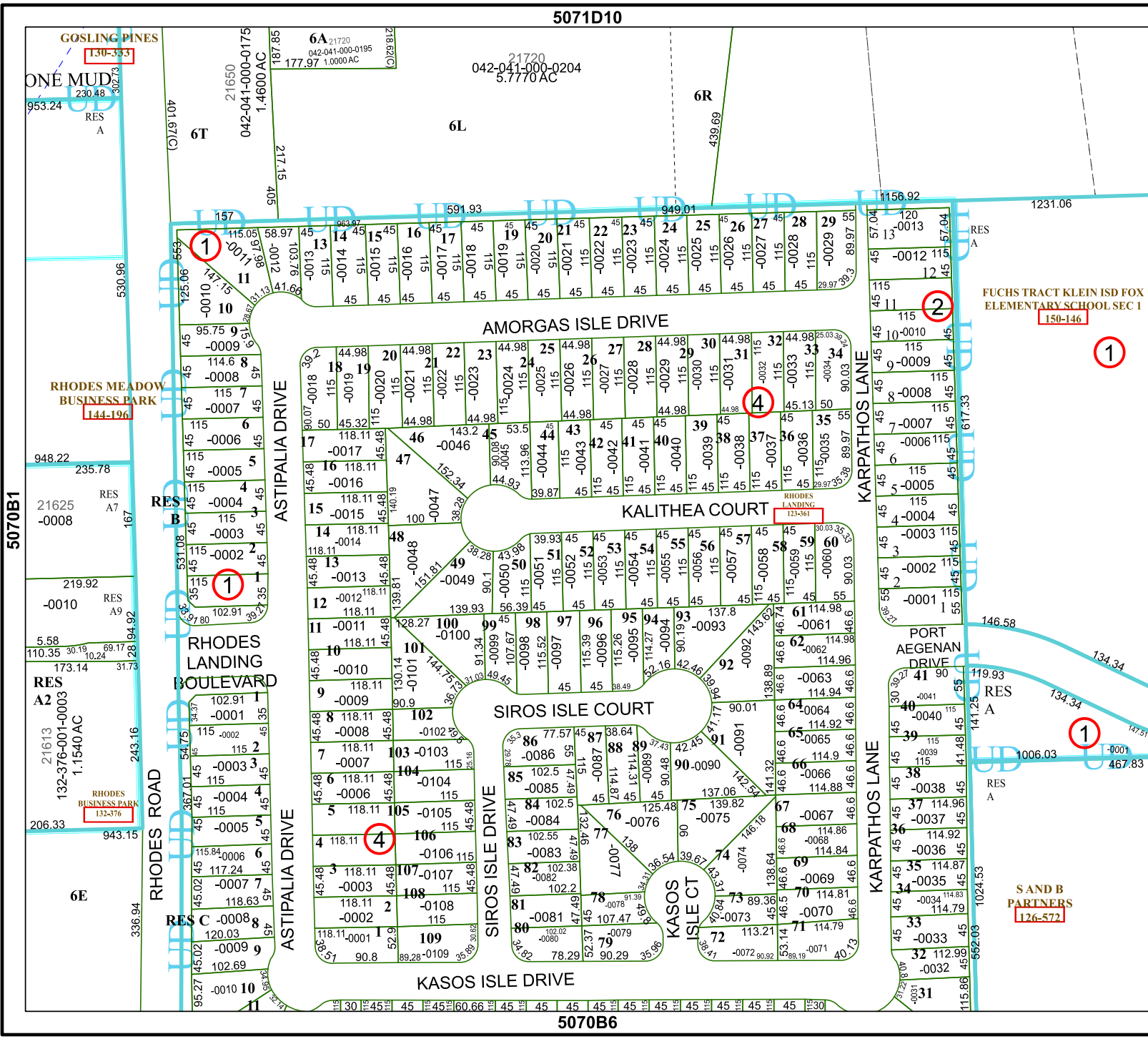


# FACET 5070B2

12	9	10	11	12
4	1	2	3	4
8	5	6	7	8

5071D10

5070B6



5070B3

5070B1

SAND B PARTNERS  
126-572

FUCHS TRACT KLEIN ISD FOX  
ELEMENTARY SCHOOL SEC 1  
150-146

130-353

RHODES MEADOW  
BUSINESS PARK  
144-196

RHODES LANDING  
123-361

RHODES  
BUSINESS PARK  
132-376