

Harris Central Appraisal District



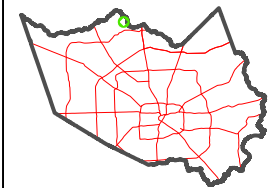
0 45 90 180 Feet

PUBLICATION DATE:
2/27/2023

Geospatial or map data maintained by the Harris Central Appraisal District is for informational purposes and may not have been prepared for or be suitable for legal, engineering, or surveying purposes. It does not represent an on-the-ground survey and only represents the approximate location of property boundaries.



MAP LOCATION

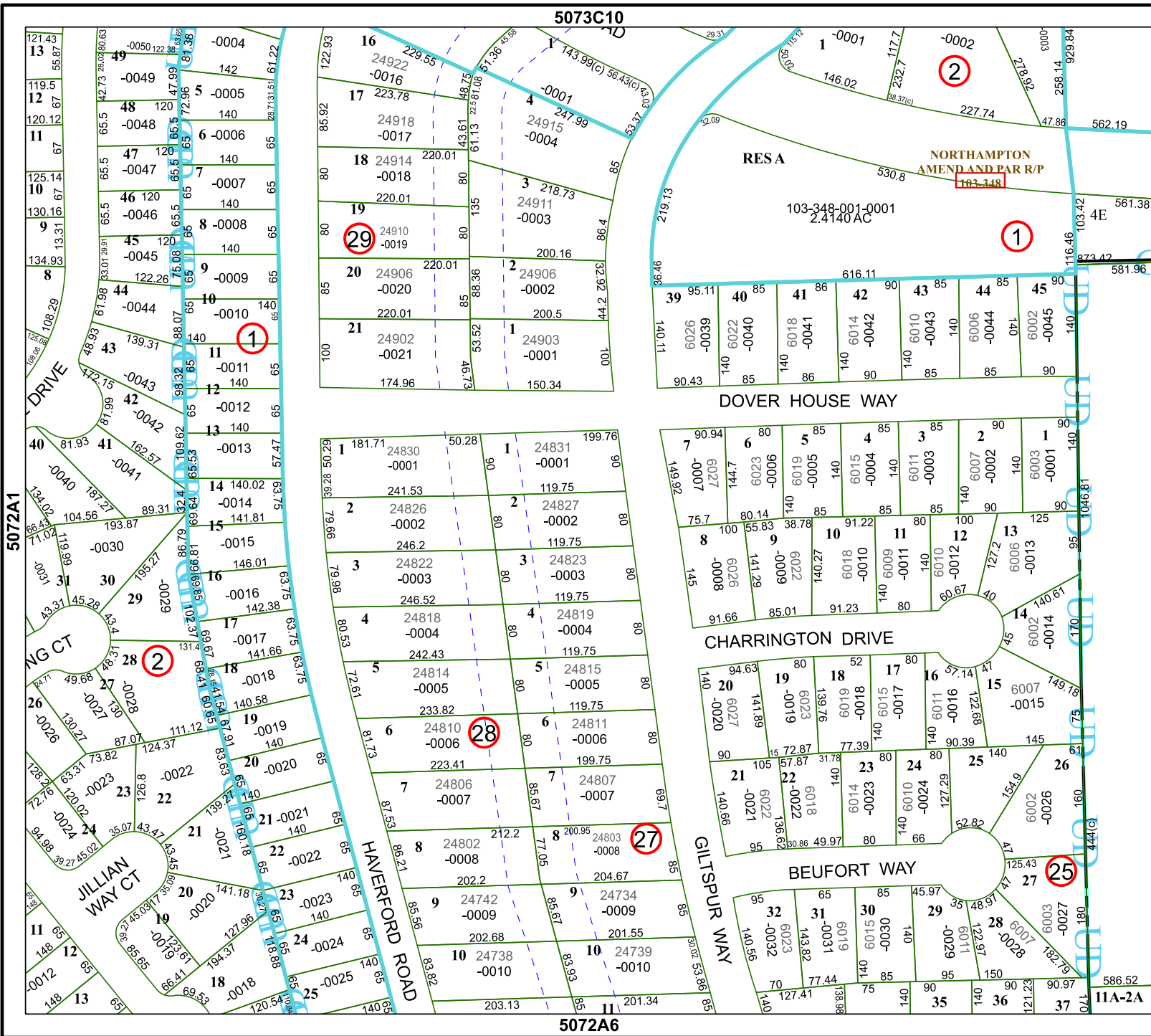


FACET 5072A2

12	9	10	11	12
4	1	2	3	4
8	5	6	7	8

5073C10

5072A6



5072A1

5072A3

11A-2A