

# Harris Central Appraisal District



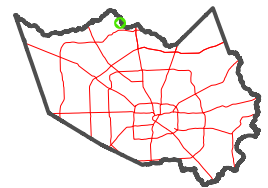
0 45 90 180 Feet

PUBLICATION DATE:  
4/8/2024

Geospatial or map data maintained by the Harris Central Appraisal District is for informational purposes and may not have been prepared for or be suitable for legal, engineering, or surveying purposes. It does not represent an on-the-ground survey and only represents the approximate location of property boundaries.

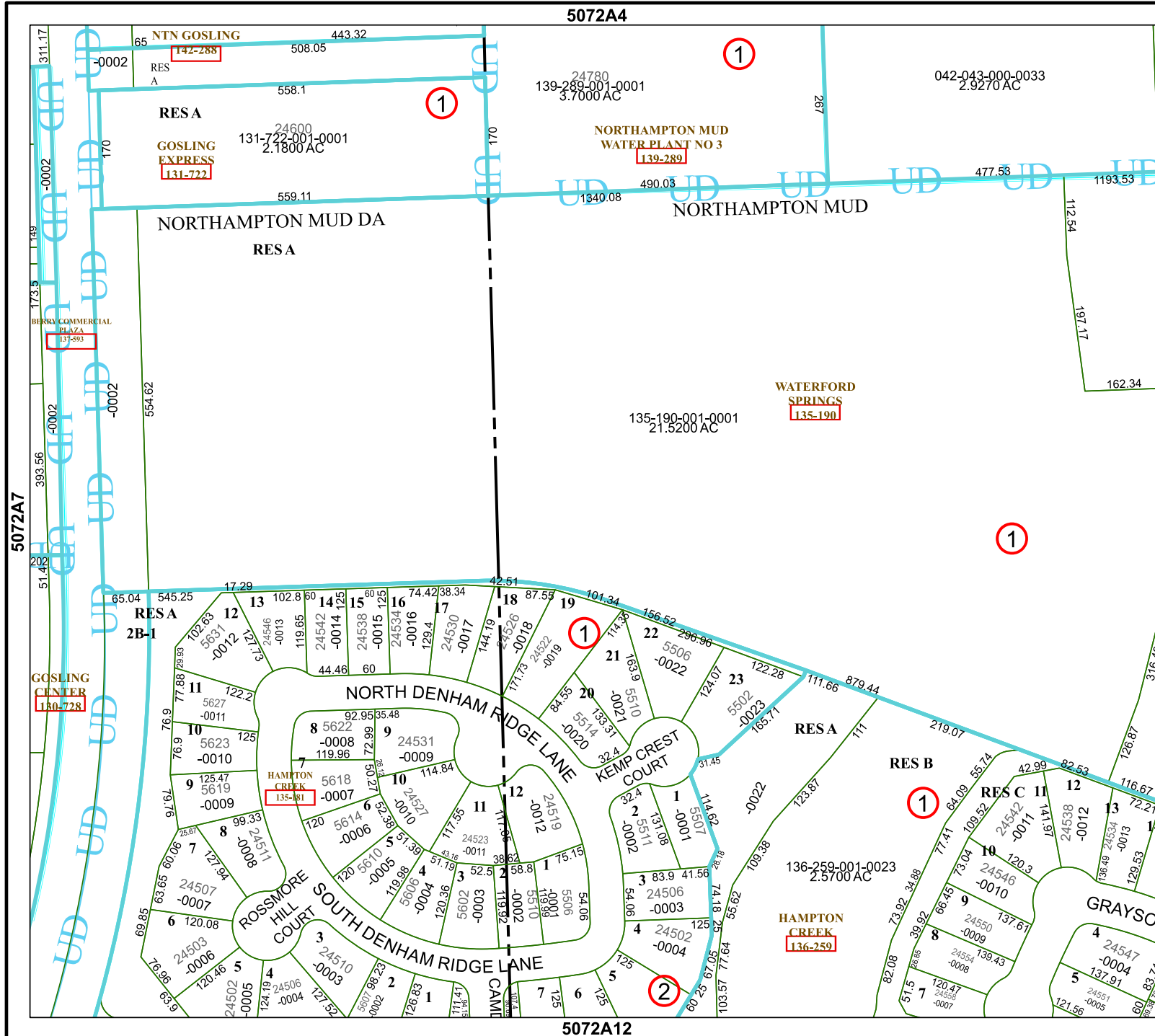


MAP LOCATION



## FACET 5072A8

2	3	4	1	2
6	7	8	5	6
10	11	12	9	10



5072A4

5072A12

5072A7

5072B5