

# Harris Central Appraisal District

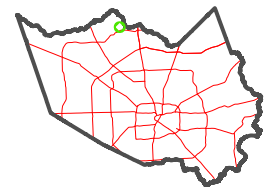


0 45 90 180 Feet

PUBLICATION DATE:  
4/22/2024

Geospatial or map data maintained by the Harris Central Appraisal District is for informational purposes and may not have been prepared for or be suitable for legal, engineering, or surveying purposes. It does not represent an on-the-ground survey and only represents the approximate location of property boundaries.

MAP LOCATION



## FACET 5072C10

8	5	6	7	8
12	9	10	11	12
4	1	2	3	4

5072C6

CREEKVIEW DRIVE

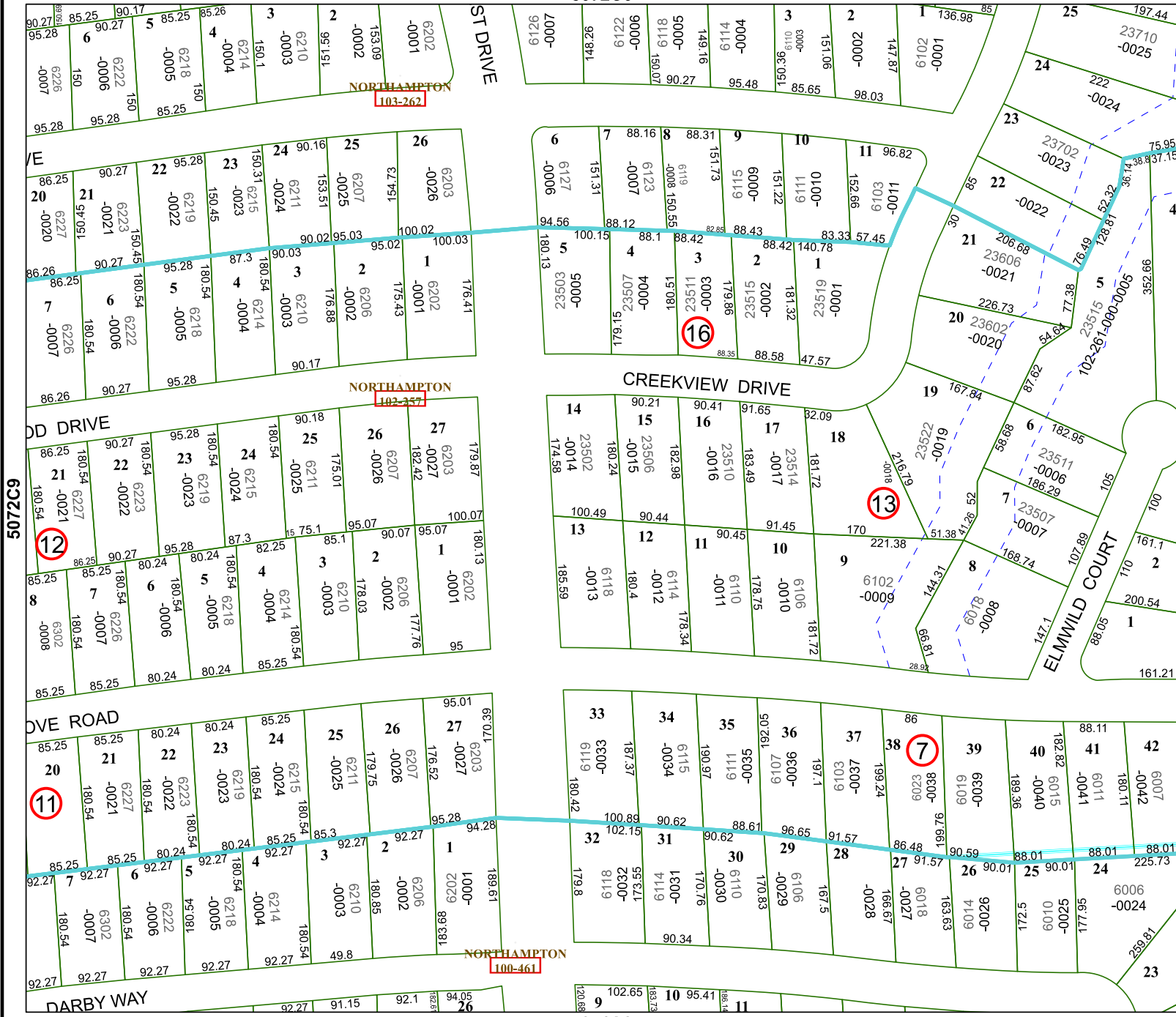
ELMWILD COURT

5071A2

NORTHAMPTON 103-262

NORTHAMPTON 102-357

NORTHAMPTON 100-461



603205

5072C10

