

Harris Central Appraisal District



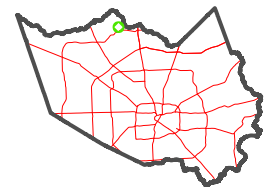
0 45 90 180 Feet

PUBLICATION DATE: 4/22/2024

Geospatial or map data maintained by the Harris Central Appraisal District is for informational purposes and may not have been prepared for or be suitable for legal, engineering, or surveying purposes. It does not represent an on-the-ground survey and only represents the approximate location of property boundaries.



MAP LOCATION

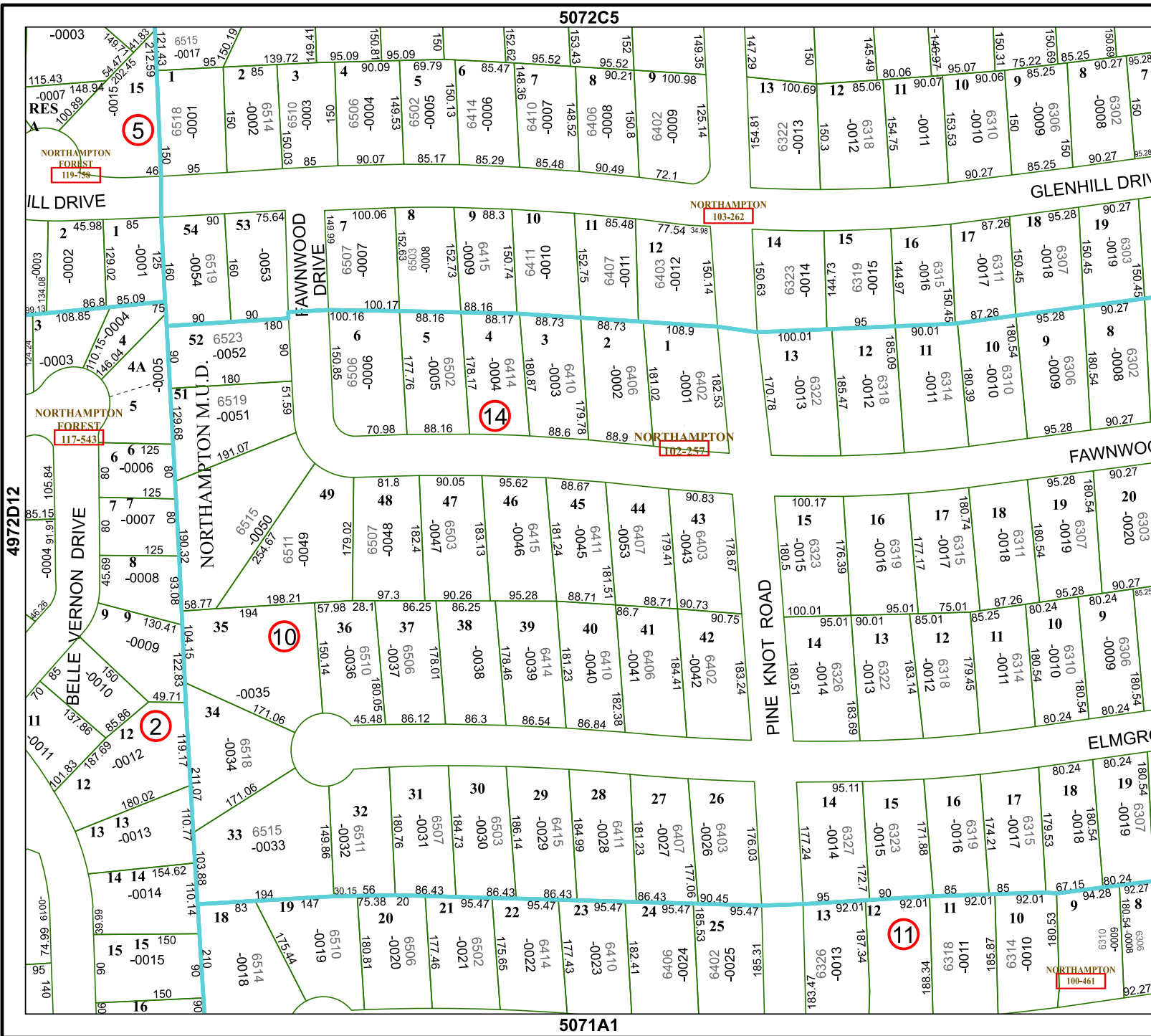


FACET 5072C9

7	8	5	6	7
11	12	9	10	11
3	4	1	2	3

5072C5

5071A1



4972D12

5072C10

5072C9

NORTHAMPTON 100-461