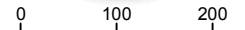
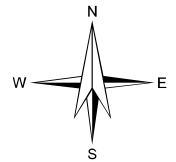


5150D9

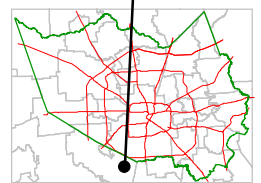
Harris County Appraisal District



PUBLICATION DATE:
5/27/2009



MAP LOCATION



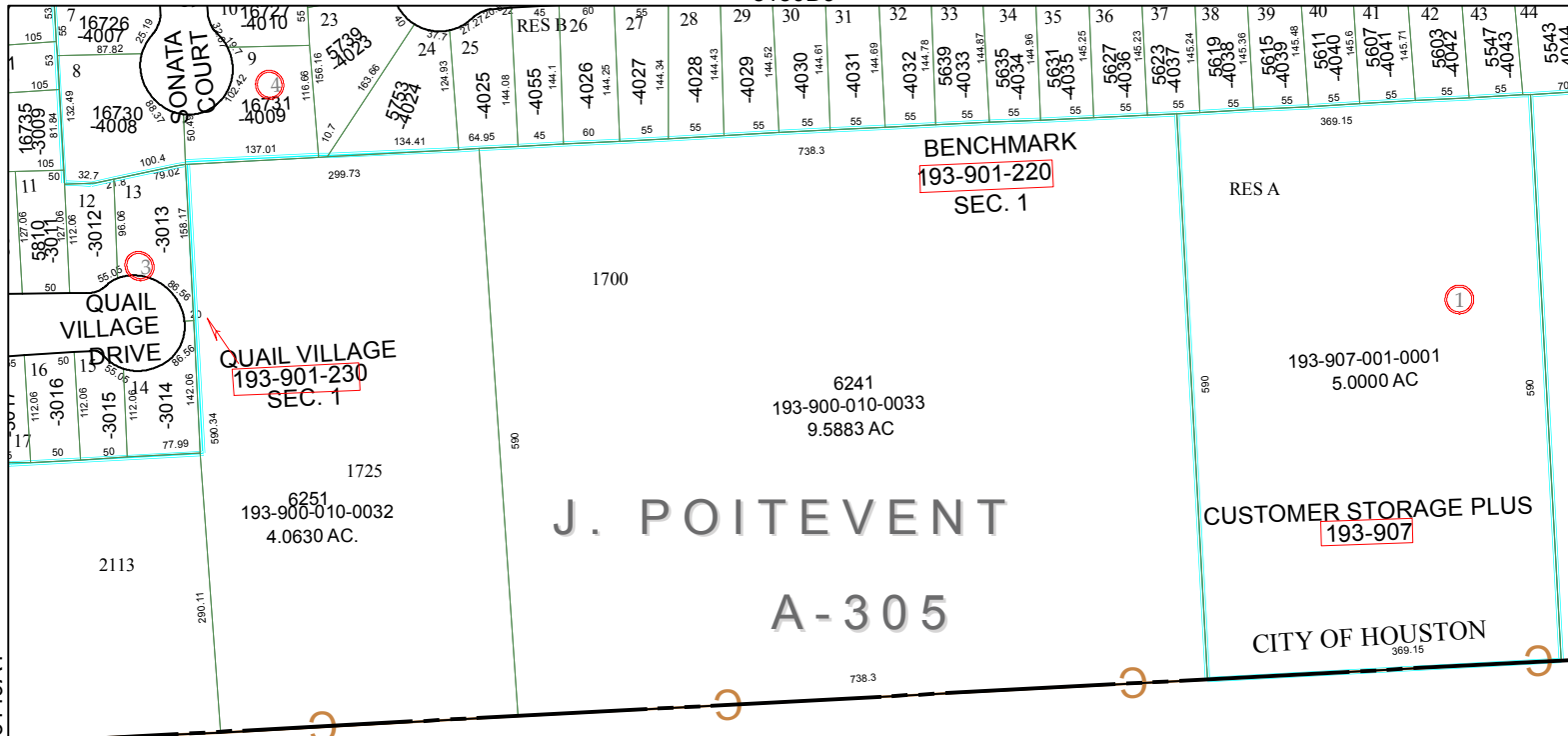
FACET 5149B

1	2	3	4
5	6	7	8
9	10	11	12

5149A4

5149B2

5149B5



QUAIL VILLAGE
193-901-230
SEC. 1

BENCHMARK
193-901-220
SEC. 1

J. POITEVENT
A-305

CUSTOMER STORAGE PLUS
193-907

CITY OF HOUSTON