

5151A11

Harris Central Appraisal District



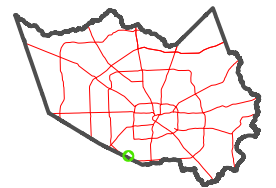
0 45 90 180 Feet

PUBLICATION DATE:
12/30/2023

Geospatial or map data maintained by the Harris Central Appraisal District is for informational purposes and may not have been prepared for or be suitable for legal, engineering, or surveying purposes. It does not represent an on-the-ground survey and only represents the approximate location of property boundaries.



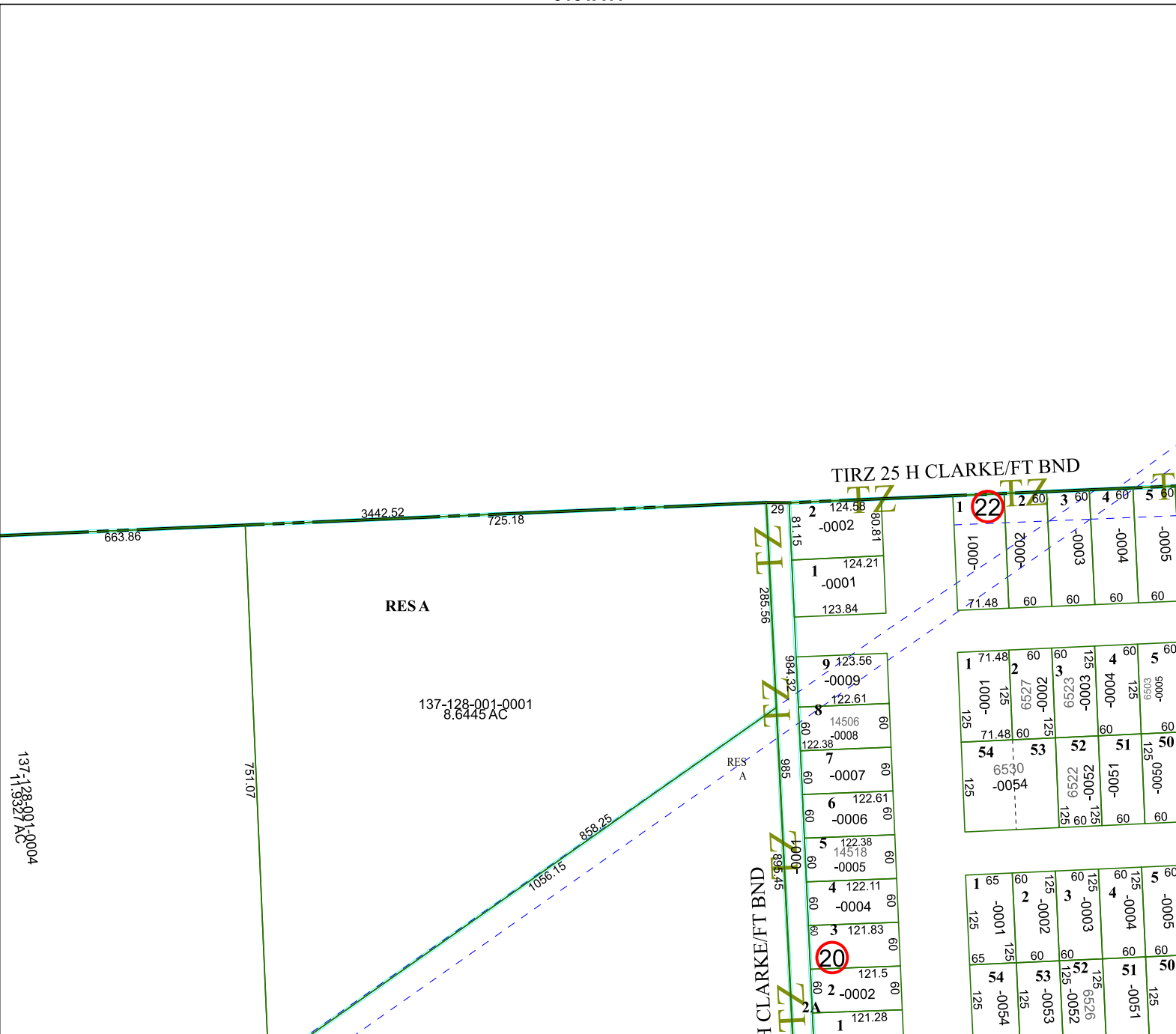
MAP LOCATION



FACET 5151C3

9	10	11	12	9
1	2	3	4	1
5	6	7	8	5

5151C2



5151C7

5151C4

137-128-001-0004
137-13327 AC