

Harris Central Appraisal District

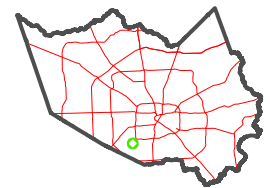


0 45 90 180 Feet

PUBLICATION DATE: 4/3/2023

Geospatial or map data maintained by the Harris Central Appraisal District is for informational purposes and may not have been prepared for or be suitable for legal, engineering, or surveying purposes. It does not represent an on-the-ground survey and only represents the approximate location of property boundaries.

MAP LOCATION

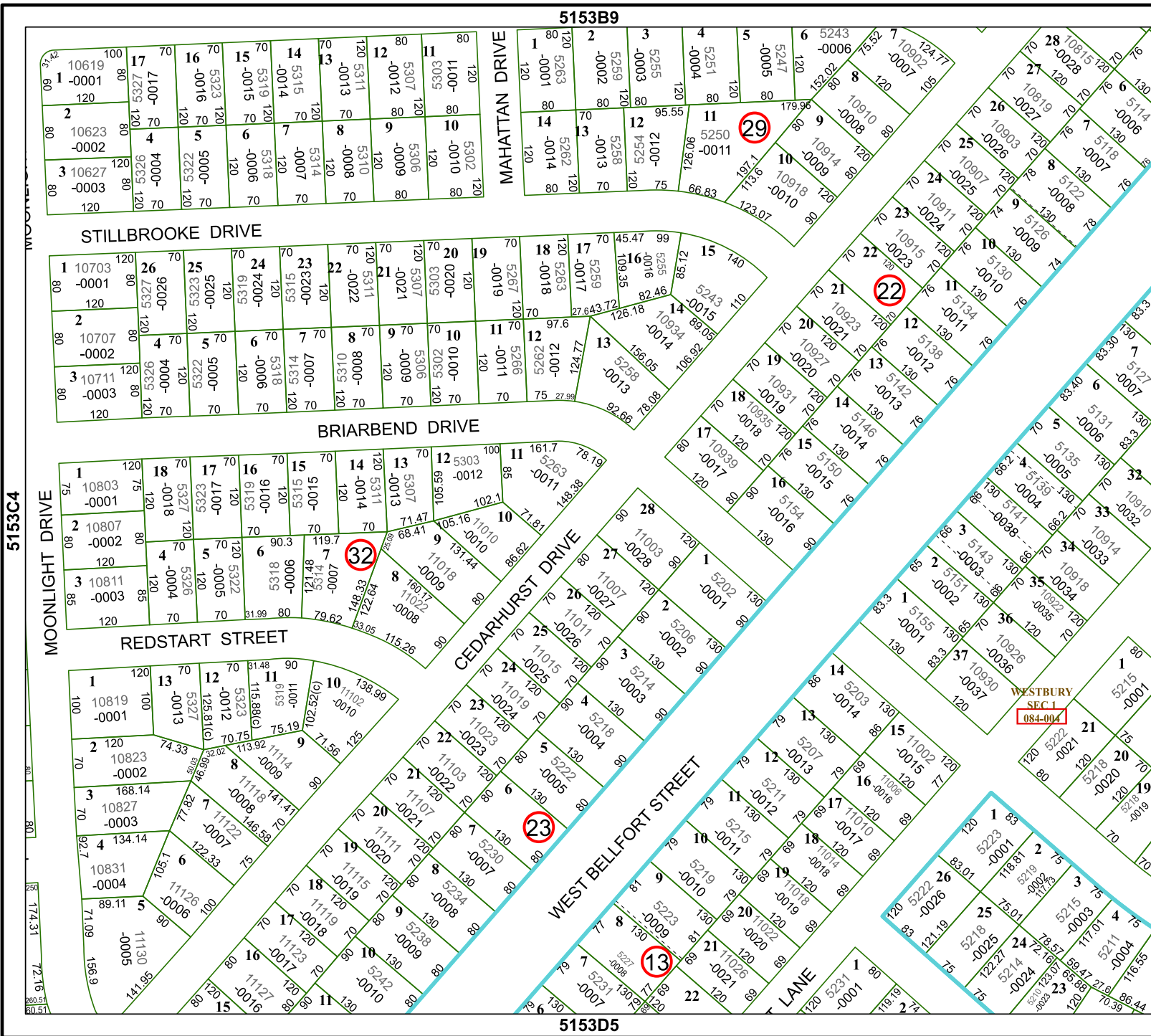


FACET 5153D1

11	12	9	10	11
3	4	1	2	3
7	8	5	6	7

5153B9

5153D5



5153C4

5153D2