

# Harris Central Appraisal District



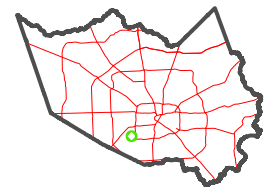
0 45 90 180 Feet

PUBLICATION DATE: 12/30/2023

Geospatial or map data maintained by the Harris Central Appraisal District is for informational purposes and may not have been prepared for or be suitable for legal, engineering, or surveying purposes. It does not represent an on-the-ground survey and only represents the approximate location of property boundaries.



MAP LOCATION



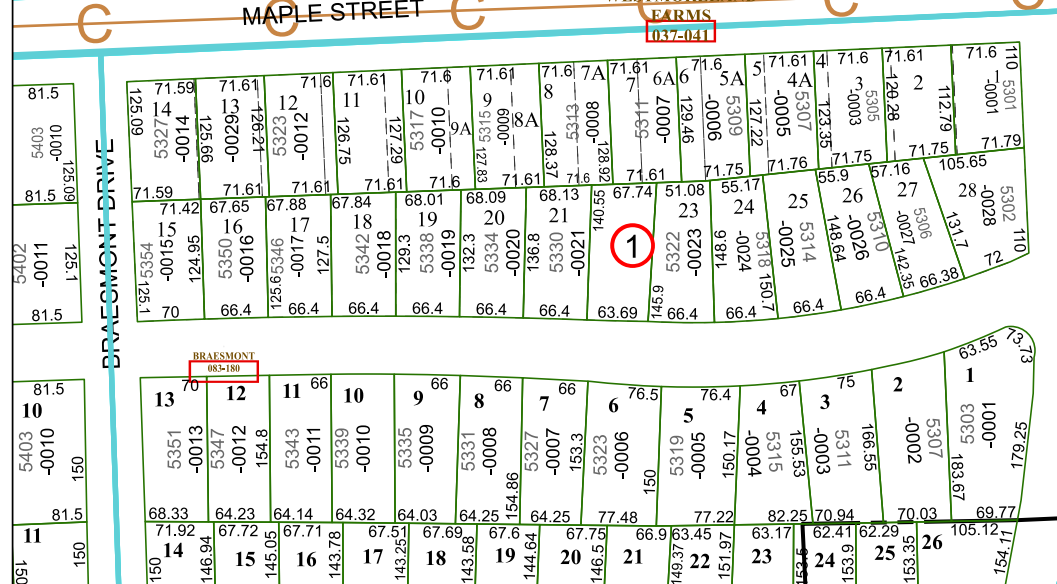
## FACET 5154A12

6	7	8	5	6
10	11	12	9	10
2	3	4	1	2

5154A8



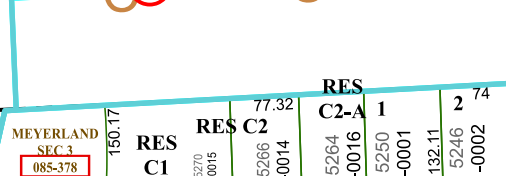
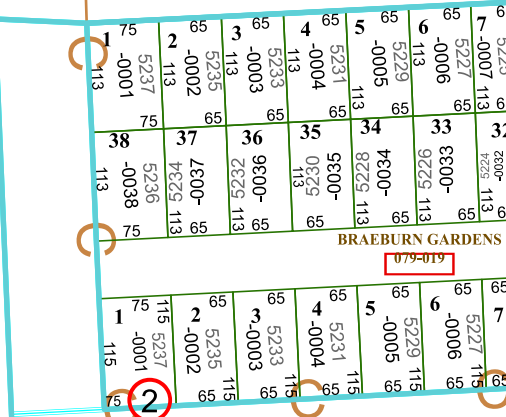
5154C4



CHIMNEY ROCK ROAD



5154B8



5154A11

