

Harris Central Appraisal District

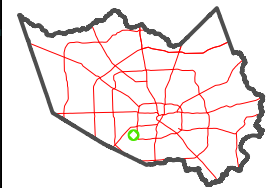


0 45 90 180 Feet

PUBLICATION DATE:
12/30/2023

Geospatial or map data maintained by the Harris Central Appraisal District is for informational purposes and may not have been prepared for or be suitable for legal, engineering, or surveying purposes. It does not represent an on-the-ground survey and only represents the approximate location of property boundaries.

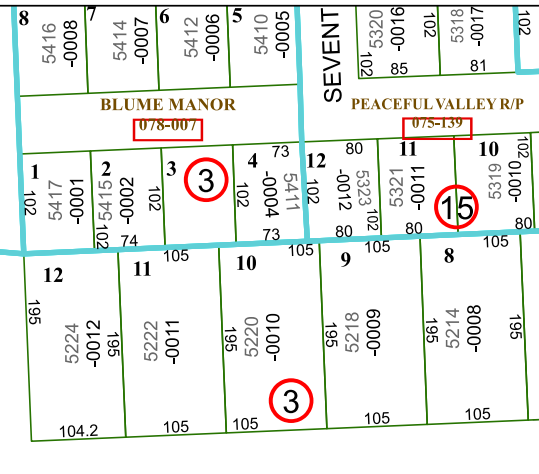
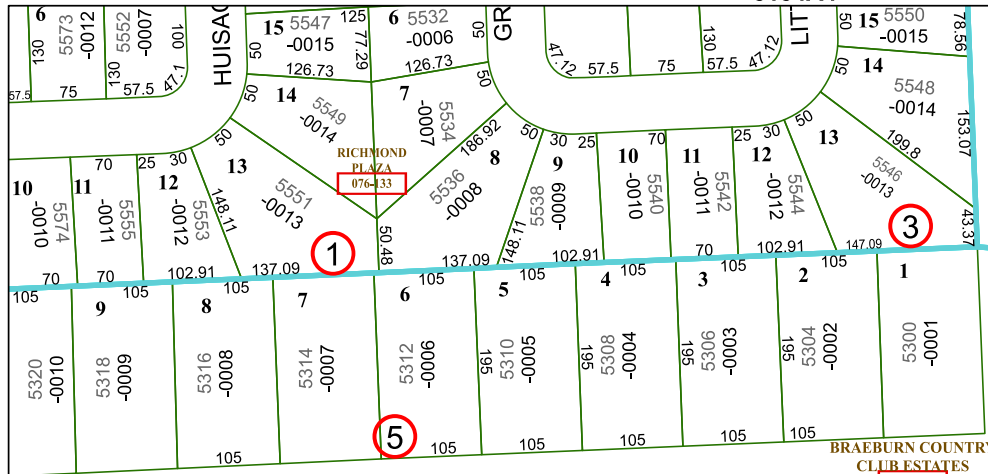
MAP LOCATION



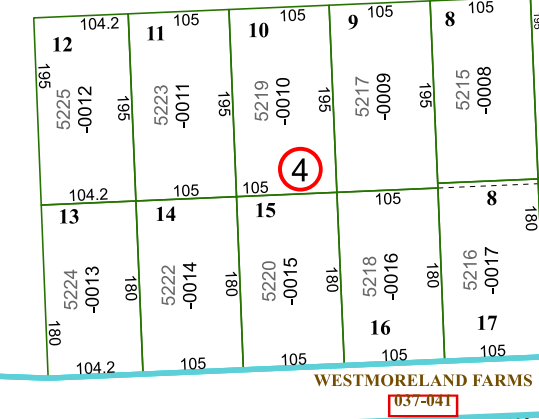
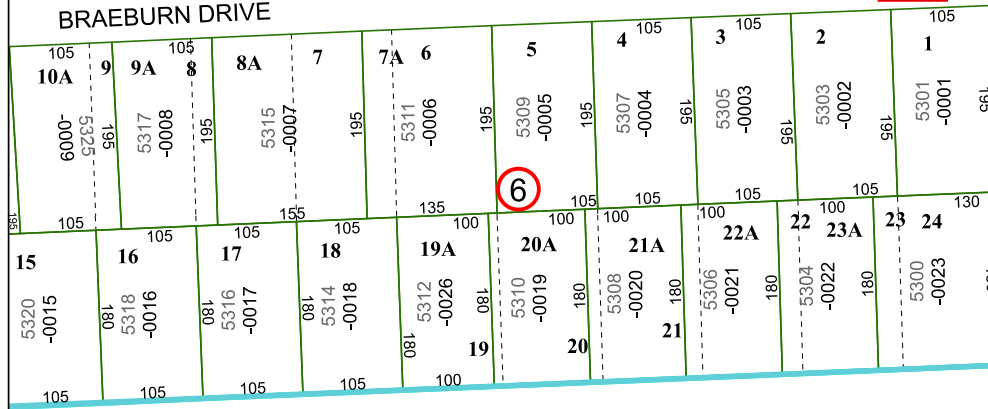
FACET 5154A8

2	3	4	1	2
6	7	8	5	6
10	11	12	9	10

5154A4



5154A7



5154A12

