

Harris Central Appraisal District

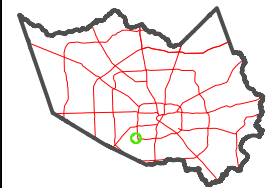


0 45 90 180 Feet

PUBLICATION DATE: 3/25/2024

Geospatial or map data maintained by the Harris Central Appraisal District is for informational purposes and may not have been prepared for or be suitable for legal, engineering, or surveying purposes. It does not represent an on-the-ground survey and only represents the approximate location of property boundaries.

MAP LOCATION



FACET 5154D6

4	1	2	3	4
8	5	6	7	8
12	9	10	11	12

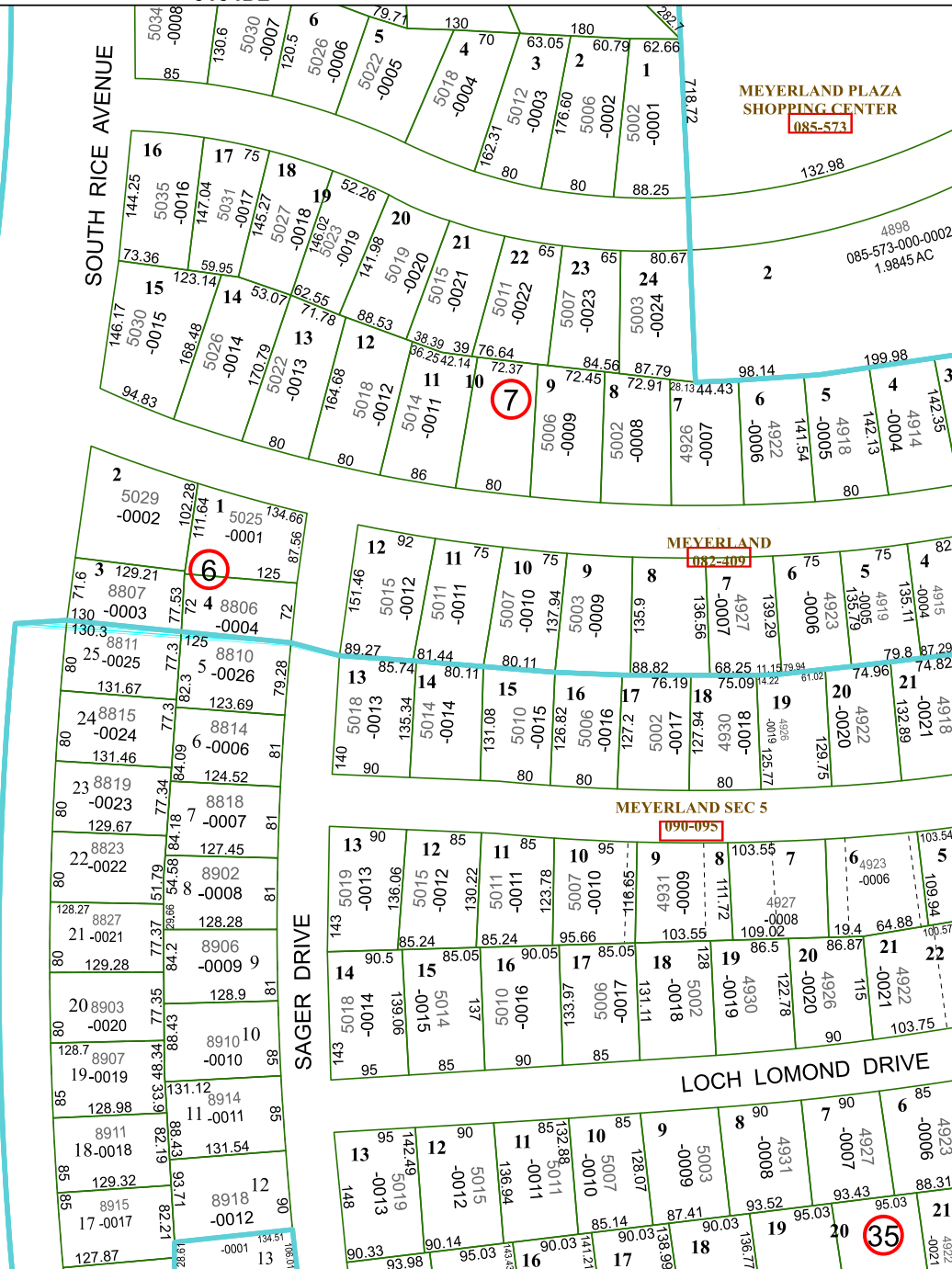
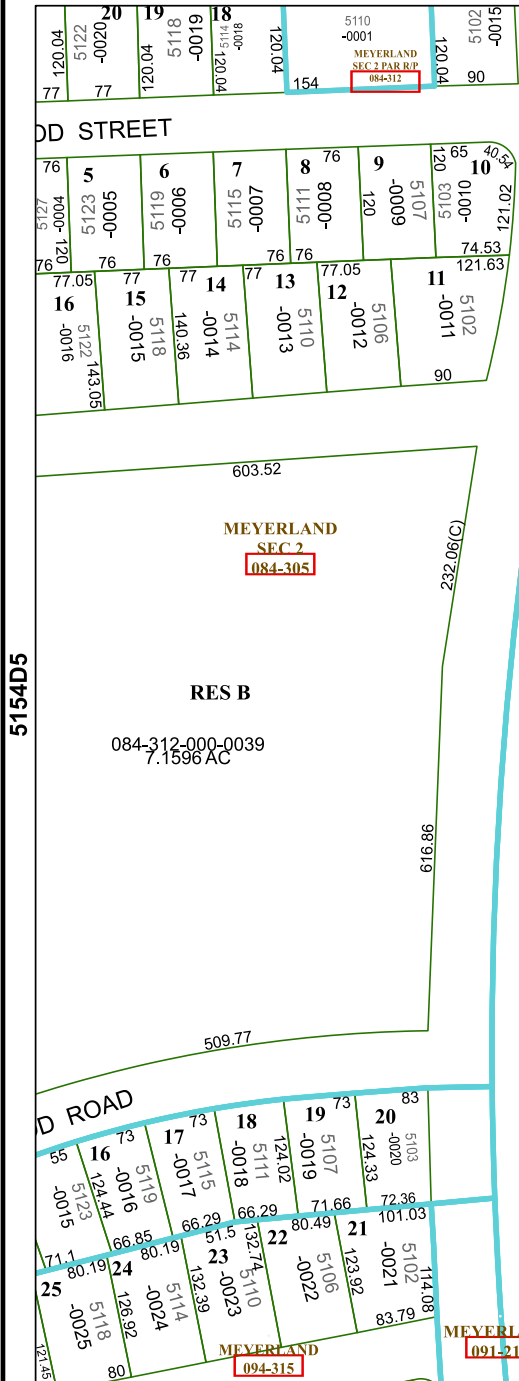
5154D2

MEYERLAND PLAZA SHOPPING CENTER
085-573

SOUTH RICE AVENUE

SOUTH RICE AVENUE

5154D10



5154D7

21