

Harris Central Appraisal District



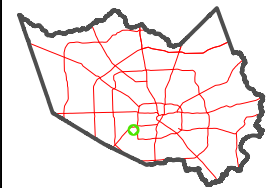
0 45 90 180 Feet

PUBLICATION DATE: 1/6/2023

Geospatial or map data maintained by the Harris Central Appraisal District is for informational purposes and may not have been prepared for or be suitable for legal, engineering, or surveying purposes. It does not represent an on-the-ground survey and only represents the approximate location of property boundaries.



MAP LOCATION

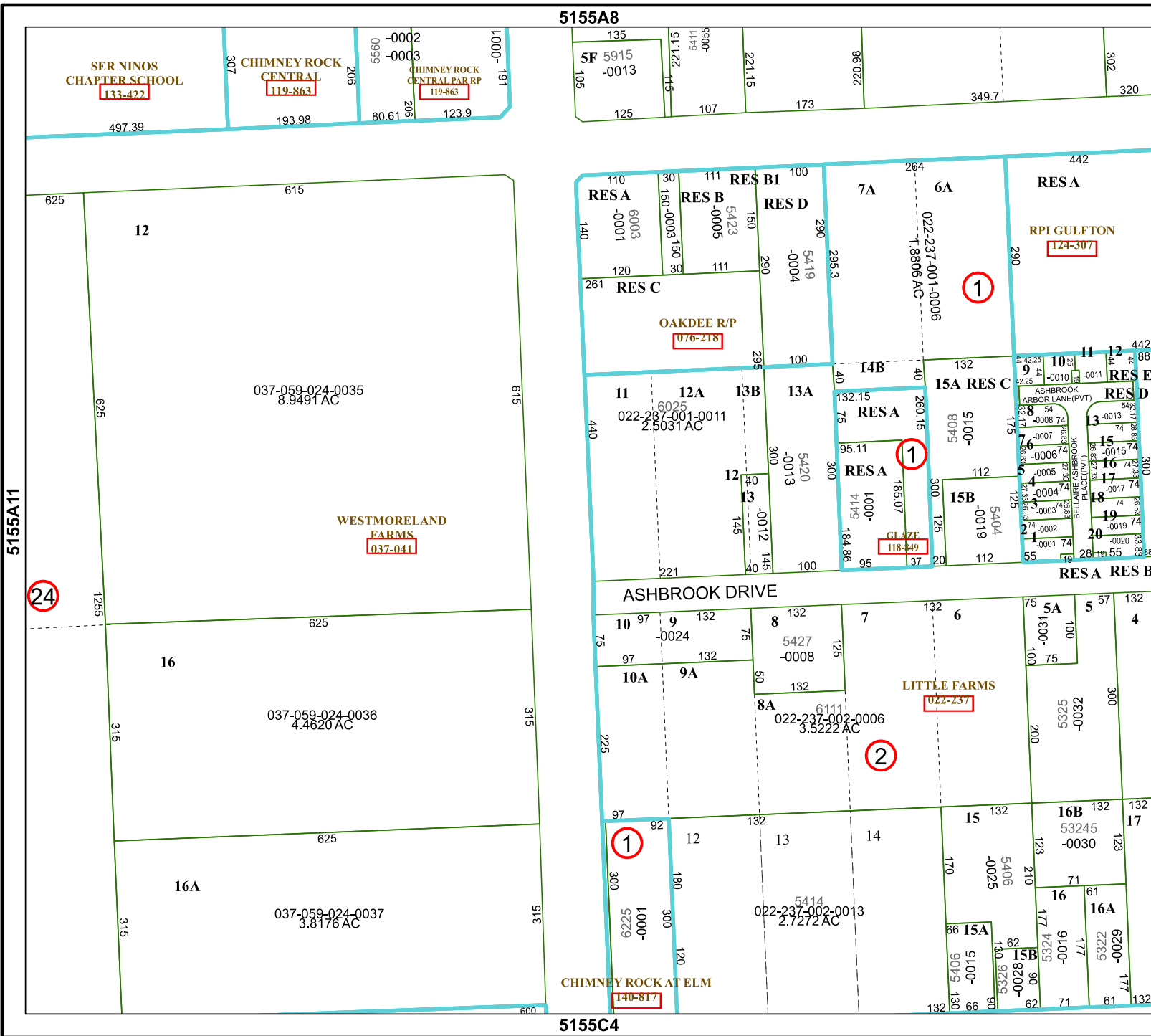


FACET 5155A12

6	7	8	9	6
10	11	12	9	10
2	3	4	1	2

5155A8

5155C4



SER NINOS
CHAPTER SCHOOL
133-422

CHIMNEY ROCK
CENTRAL
119-863

CHIMNEY ROCK
CENTRAL PAR RP
119-863

037-059-024-0035
8.9491 AC

WESTMORELAND
FARMS
037-041

037-059-024-0036
4.4820 AC

037-059-024-0037
3.8176 AC

CHIMNEY ROCK AT ELM
140-817

RESA

RES B

RES D

RESA

RPI GULFTON
124-307

OAKDEE R/P
076-218

11 12A 13B 13A
022-237-001-0011
2.5031 AC

RESA

RESA

GLAZE
118-449

ASHBROOK DRIVE

LITTLE FARMS
022-237

8A
022-237-002-0006
3.5222 AC

6	7	8	9	6
10	11	12	9	10
2	3	4	1	2