

# Harris Central Appraisal District

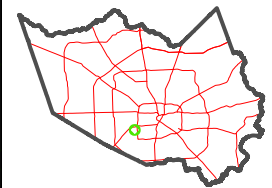


0 45 90 180 Feet

PUBLICATION DATE: 1/6/2023

Geospatial or map data maintained by the Harris Central Appraisal District is for informational purposes and may not have been prepared for or be suitable for legal, engineering, or surveying purposes. It does not represent an on-the-ground survey and only represents the approximate location of property boundaries.

MAP LOCATION



## FACET 5155B9

7	8	5	6	7
11	12	9	10	11
3	4	1	2	3

5155B5

GULFTON DRIVE

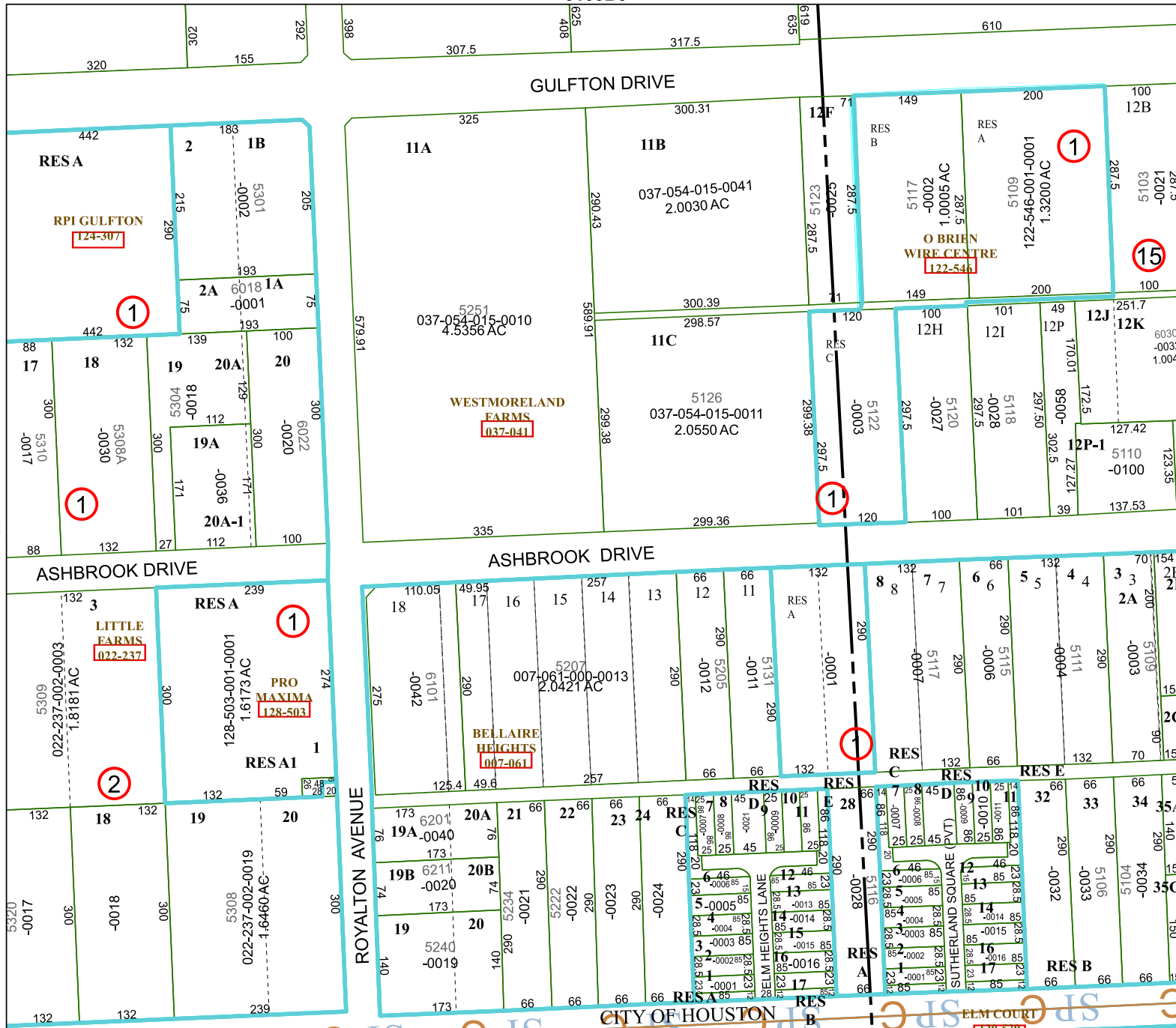
ASHBROOK DRIVE

ROYALTON AVENUE

5155D1

5155A12

5155B10



CITY OF HOUSTON

ELM COURT